

Summary Sheet

Date	22/4/13-25/4/13
Grid Reference	SE 440 035
Site Area	182.8 ha
Surveyor	Chris Doar

Site Name	Land south of Dearne Valley Parkway
Site Ref Number	D1A

1 ASSESSMENT

Biodiversity interest (record presence by a cross as appropriate)

Habitat	Present	Notes & photo refs
Woodland	X	
Scrub	X	
Scattered trees	X	D1B 4
Species poor or defunct hedgerows	X	
Species rich hedgerows		
Amenity or improved grassland		
Semi-improved grassland	X	
Unimproved grassland		
Marshy grassland	X	D1B 6
Tall ruderals	X	
Dwarf shrub heath		
Lichen/bryophyte heath		
Reedbed		
Swamp		
Standing water (ponds)		
Flowing watercourses	X	D1A 3; D1A 4
Arable / cultivated farmland	X	D1A 1; D1B 2; D1B 5
Other: Bare ground	X	D1B 5

Species	Present (seen)	Quality of habitat		
		Low	Mod	High
Plants	X			
Invertebrates	X		X	
Amphibians		X		
Reptiles		X		
Birds	X		X	
Mammals	X		X	
Fish			X	
Other				

Influences on external features

On watercourse	Yes. Carr Dike flows through the site
On wildlife corridor	No
Would lead to habitat isolation	No
Proximity/linkage to SSSI/LNR	None
Other	

2 RECOMMENDATION

	Mitigation measures / design considerations	Score
a) Development of the site for housing would have no detrimental local ecological impact.		
b) Development of the site for housing would result in some adverse local ecological impact but there is scope for mitigation.	<p>Should this site be developed, then such development should include the creation of a 'habitat' corridor' (at least 8m in width) along Carr Dike. Care should also be taken that Carr Dike does not become 'starved' of water as it passes through the site, and any development should include a Sustainable Urban Drainage scheme to ensure that rainwater falling on the site is still able to drain into the Dike.</p> <p>It is also ecologically desirable that the existing woodland and hedgerows on the site periphery be retained. Ideally the two internal hedgerows should also be retained but if this is not possible then additional hedgerow creation along Carr Head Lane should be undertaken to compensate for the habitat lost.</p>	3
c) Development of the site for housing would result in detrimental ecological impacts.		

3 PHOTOGRAPHIC DETAILS

Photograph locations are recorded on the site map.

Photo Ref	Caption
D1A 1	View SE over site from Pasture Lane.
D1A 2	View SW over site from Pasture Lane
D1A 3	Carr Dike at southern boundary of site
D1A 4	Carr Dike in centre of site
D1A 5	View of site from south-eastern corner
D1A 6	Area of marshy grassland

4 FURTHER INFORMATION

Brief Site Description

This large site comprises arable farmland, with a network of species-poor hedges and ditches running through it. Areas of young broad-leaved plantation woodland are present along the northern boundary with the Barnsley Road, whilst more mature broadleaved woodland is present along stretches of Carr Dike, which flows through the centre of the site. On the site's eastern boundary an area of land contiguous with area D1B has been fenced off and is currently being levelled, presumably as a prelude to development.

Additional comments / information

Short-eared Owl (*Asio flammeus*) was recorded on site. They are of European conservation concern and so are an Amber List species.

Darfield Area

Sub-site D1A

Site Area: 182.8ha

OS Grid Ref: SE 440 035

Date Surveyed: 22/4/13-25/4/13

Surveyor: Chris Doar

Site Description

This large site comprises arable farmland, with a network of species-poor hedges and ditches running through it. Areas of young broad-leaved plantation woodland are present along the northern boundary with the Barnsley Road, whilst more mature broadleaved woodland is present along stretches of Carr Dike, which flows through the centre of the site. On the site's eastern boundary an area of land contiguous with area D1B has been fenced off and is currently being levelled, presumably as a prelude to development.

The site contains a variety of hedgerows, of various ages, connectivity and species diversity. The hedgerows that form the western and northern boundary are relatively young, entire and very species poor – with Hawthorn (*Crataegus monogyna*) the dominant (and for long stretches the only) shrub, and a ground flora dominated by Cock's-foot (*Dactylis glomerata*) and Cow Parsley (*Anthriscus sylvestris*).

The hedgerows within the site show a greater species diversity, with Blackthorn (*Prunus spinosa*) dominating stretches of growth, and occasional hedgerow trees. These hedgerows are often double, with two lines of shrubs surrounding a central ditch. Their ground flora is again poor, and dominated by rank grasses with herbs such as Cow Parsley, Broad-leaved Dock (*Rumex obtusifolius*), Garlic Mustard (*Alliaria petiolata*) and Hemlock (*Conium maculatum*) common. Of greatest species diversity were the defunct hedgerows bordering Pasture Lane and Carr Head Lane. These are now gappy, but show signs of past laying. They contain a greater diversity of shrub species, with Hawthorn, Blackthorn, Field Maple (*Acer campestre*), Hazel (*Corylus avellana*) and Elder (*Sambucus nigra*) amongst the species recorded. However, their ground flora remains relatively species-poor and is again dominated by rank grasses and herb species commonly found on 'edge' habitats.

The site contains a small quantity of semi-improved neutral grassland. This is generally present as thin linear strips running along linear features, such as the site's ditches and dikes, although one larger expanse is present. These grasslands strips have a similar flora to the hedgerow bottoms, with rank grasses dominating, with Nettle (*Urtica dioica*), Broad-leaved Dock, Cow Parsley and Hogweed (*Heracleum sphondylium*) common. Common knapweed (*Centaurea nigra*), Yarrow (*Achillea millefolium*), Hedgerow Cranesbill (*Geranium pyrenacium*) and Lesser Celendine (*Ranunculus ficaria*) were also recorded in small numbers.

Two semi-improved grassland areas are present adjacent to Woodbine Cottage. The larger of these is sheep grazed, and appears species poor.

A stream – Carr Dike – flows across the site. It is steep-sided, with its banks being largely vegetated by the semi-improved neutral grassland described above. Very few species are specifically associated with the dike, but Wild Angelica (*Angelica sylvestris*), Bulrush (*Typha latifolia*) and Common Sedge (*Carex nigra*) were recorded only along its length. To the north, the sides of the Dike are wooded and a couple of ancient woodland indicator species were recorded (see Target Note 2 below).

Target Notes

TN1 OS 439 041

A small area of marshy grassland dominated by Tufted Hair-grass (*Deschampsia cespitosa*) and *Juncus* species, with scattered Silver Birch (*Betula pendula*) and Willow (*Salix* sp.) scrub. This area is species poor but target-noted here due to its uniqueness on this site.

TN2 OS 433 048

This section of Carr Dike is lined by semi-mature trees and shrubs including Beech (*Fagus sylvatica*), Oak (*Quercus x rosacea*) and Sycamore (*Acer pseudoplatanus*). The ground flora is grass dominated, with many of the ruderal species mentioned above present. However, two ancient woodland indicator species – Yellow Archangel (*Lamium galeobdolon*) and Greater Stitchwort (*Stellaria holostea*) – were recorded here.



Photo D1A 1 View SE over site from Pasture Lane.



Photo D1A 2 View SW over site from Pasture Lane



Photo D1A 3 Carr Dike at southern boundary of site.



Photo D1A 4 Carr Dike in centre of site.



Photo D1A 5 View of site from south-eastern corner.



Photo D1A 6 Area of marshy grassland

Species List for D1A

DAFOR Scale

D=dominant, A=abundant, F=frequent, O=occasional, R=rare, L=locally

Hedgerows, Ditches and Field Margins

Trees and Shrubs

Field Maple	<i>Acer campestre</i>	LF
Hazel	<i>Corylus avellana</i>	O
Hawthorn	<i>Crataegus monogyna</i>	D
Garden Privet	<i>Ligustrum ovafolium</i>	R
Blackthorn	<i>Prunus spinosa</i>	LD
Dog Rose	<i>Rosa canina</i>	O
Bramble	<i>Rubus fruticosus</i>	O
Elder	<i>Sambucus nigra</i>	O
Whitebeam	<i>Sorbus aria</i> agg.	R
	<i>Tripleurospermum</i>	
Scentless Mayweed	<i>inodorum</i>	R
Gorse	<i>Ulex europaeus</i>	O

Herbs

Yarrow	<i>Achillea millefolium</i>	R
Garlic Mustard	<i>Alliaria petiolata</i>	O
Cow Parsley	<i>Anthriscus sylvestris</i>	F
Mugwort	<i>Artemisia vulgaris</i>	O
Michaelmas-daisy	<i>Aster</i> sp.	R
Common Knapweed	<i>Centaurea nigra</i>	O
Common Mouse-ear	<i>Cerastium fontanum</i>	R
Rosebay Willowherb	<i>Chamerion angustifolium</i>	O
Spear Thistle	<i>Cirsium vulgare</i>	O
Hemlock	<i>Conium maculatum</i>	LF
Teasel	<i>Dipsacus fullonum</i>	R
Broad-leaved Willowherb	<i>Epilobium montanum</i>	O
Cleavers	<i>Galium aparine</i>	F
Hedgerow Crane's-bill	<i>Geranium pyrenaicum</i>	R
Hogweed	<i>Heracleum sphondylium</i>	F
Ribwort Plantain	<i>Plantago lanceolata</i>	O
Lesser Celendine	<i>Ranunculus ficaria</i>	O
Creeping Buttercup	<i>Ranunculus repens</i>	F
Curled Dock	<i>Rumex crispus</i>	R
Broad-leaved Dock	<i>Rumex obtusifolius</i>	F
Common Ragwort	<i>Senecio jacobaea</i>	O
Groundsel	<i>Senecio vulgaris</i>	O
Hedge Woundwort	<i>Stachys sylvatica</i>	O
Common Chickweed	<i>Stellaria media</i>	O
Dandelion	<i>Taraxacum</i> agg.	A
White Clover	<i>Trifolium repens</i>	O
Coltsfoot	<i>Tussilago farfara</i>	F
Common Nettle	<i>Urtica dioica</i>	F
Wood Speedwell	<i>Veronica montana</i>	O

Grasses, sedges and rushes

Creeping Bent	<i>Agrostis stolonifera</i>	F
False Oat-grass	<i>Arrhenatherum elatius</i>	F
Cock's-foot	<i>Dactylis glomerata</i>	F
Tufted Hair-grass	<i>Deschampsia cespitosa</i>	LF
Red Fescue	<i>Festuca rubra</i>	O
Yorkshire Fog	<i>Holcus lanatus</i>	F
Compact Rush	<i>Juncus conglomeratus</i>	R
Soft Rush	<i>Juncus effusus</i>	O
Perennial Rye-grass	<i>Lolium perenne</i>	O
Smooth Meadow-grass	<i>Poa pratensis</i>	O
Rough Meadow-grass	<i>Poa trivialis</i>	O

Ferns

Bracken	<i>Pteridium aquilinum</i>	LF
---------	----------------------------	----

Areas of Tree Planting**Trees and Shrubs**

Field Maple	<i>Acer campestre</i>	O
Sycamore	<i>Acer pseudoplatanus</i>	O
Alder	<i>Alnus glutinosa</i>	O
Silver Birch	<i>Betula pendula</i>	F
Ash	<i>Fraxinus excelsior</i>	F
Oak	<i>Quercus x rosacea</i>	O
Dog Rose	<i>Rosa canina</i>	F

Grasses, sedges and rushes

Creeping Bent	<i>Agrostis stolonifera</i>	F
False Oat-grass	<i>Arrhenatherum elatius</i>	O
Cock's-foot	<i>Dactylis glomerata</i>	F
Yorkshire Fog	<i>Holcus lanatus</i>	F
Rough Meadow-grass	<i>Poa trivialis</i>	O

Carr Dike**Trees and Shrubs**

Sycamore	<i>Acer pseudoplatanus</i>	O
Silver Birch	<i>Betula pendula</i>	O
Hazel	<i>Corylus avellana</i>	O
Hawthorn	<i>Crataegus monogyna</i>	F
Beech	<i>Fagus sylvatica</i>	O
Oak	<i>Quercus x rosacea</i>	O
Dog Rose	<i>Rosa canina</i>	O
Whitebeam	<i>Sorbus aria</i> agg.	O

Herbs

Cow Parsley	<i>Anthriscus sylvestris</i>	A
Wild Angelica	<i>Angelica sylvestris</i>	LF
Spear Thistle	<i>Cirsium vulgare</i>	F
Hemlock	<i>Conium maculatum</i>	F
Broad-leaved Willowherb	<i>Epilobium montanum</i>	F

Yellow archangel	<i>Lamiasstrum galeobdolon</i>	R
White Dead-nettle	<i>Lamium album</i>	O
Lesser Celendine	<i>Ranunculus ficaria</i>	O
Creeping Buttercup	<i>Ranunculus repens</i>	F
Curled Dock	<i>Rumex crispus</i>	R
Broad-leaved Dock	<i>Rumex obtusifolius</i>	O
Greater Stitchwort	<i>Stellaria holostea</i>	R
Dandelion	<i>Taraxacum</i> agg.	F
Common Nettle	<i>Urtica dioica</i>	F

Grasses, sedges and rushes

Creeping Bent	<i>Agrostis stolonifera</i>	F
Common Sedge	<i>Carex nigra</i>	R
Cock's-foot	<i>Dactylis glomerata</i>	F
Yorkshire Fog	<i>Holcus lanatus</i>	A
Compact Rush	<i>Juncus conglomeratus</i>	R
Soft Rush	<i>Juncus effusus</i>	O
Perennial Rye-grass	<i>Lolium perenne</i>	R
Bulrush	<i>Typha latifolia</i>	R

Trees and Shrubs

Sycamore	<i>Acer pseudoplatanus</i>	O
Silver Birch	<i>Betula pendula</i>	O
Hazel	<i>Corylus avellana</i>	O
Hawthorn	<i>Crataegus monogyna</i>	F
Beech	<i>Fagus sylvatica</i>	O
Oak	<i>Quercus x rosacea</i>	O
Dog Rose	<i>Rosa canina</i>	O
Whitebeam	<i>Sorbus aria</i> agg.	O

Herbs

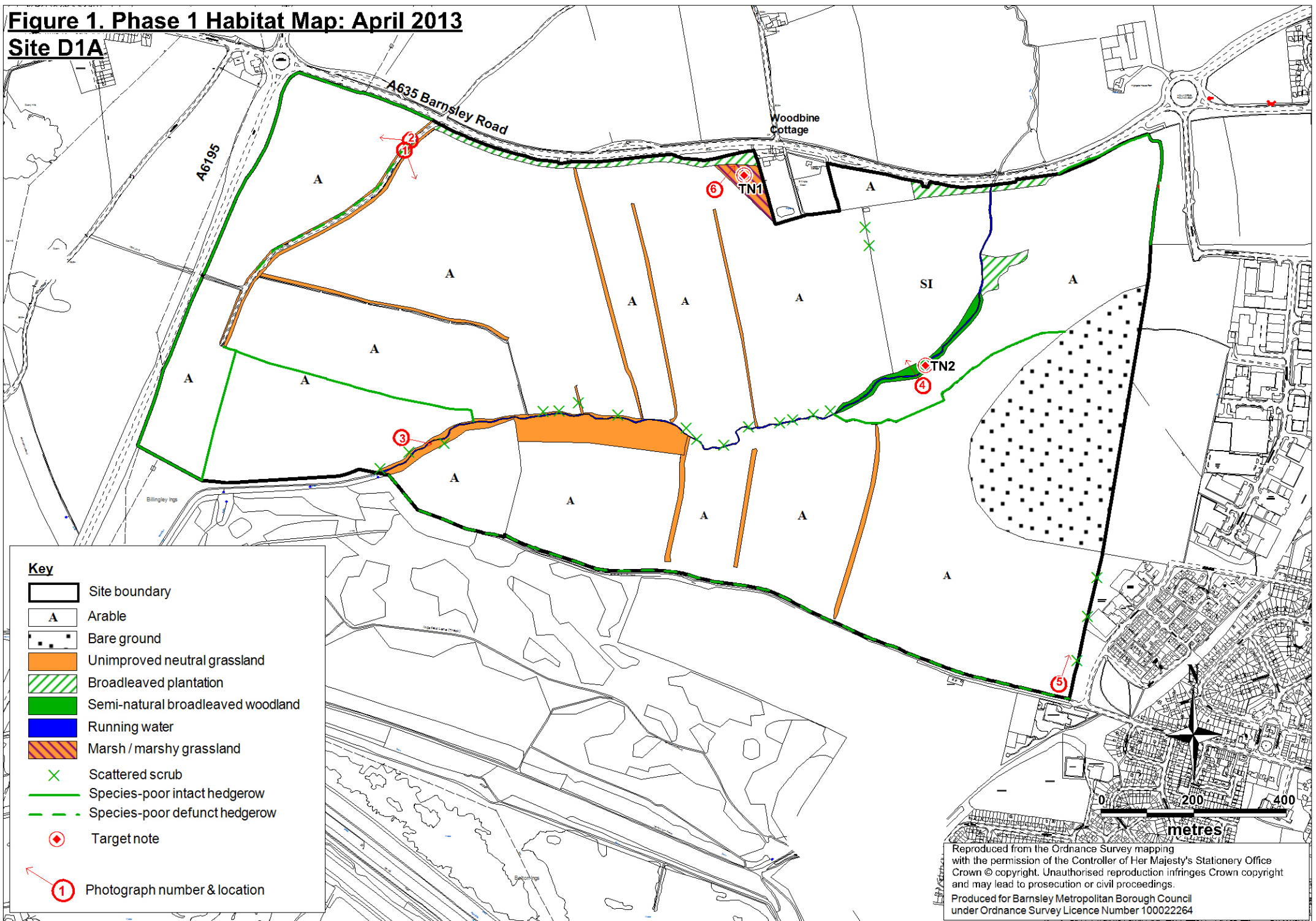
Cow Parsley	<i>Anthriscus sylvestris</i>	A
Spear Thistle	<i>Cirsium vulgare</i>	F
Hemlock	<i>Conium maculatum</i>	F
Hogweed	<i>Heracleum sphondylium</i>	F
Yellow archangel	<i>Lamiasstrum galeobdolon</i>	R
White Dead-nettle	<i>Lamium album</i>	O
Broad-leaved Dock	<i>Rumex obtusifolius</i>	O
Greater Stitchwort	<i>Stellaria holostea</i>	R
Dandelion	<i>Taraxacum</i> agg.	F
Common Nettle	<i>Urtica dioica</i>	F

Grasses, sedges and rushes

Yorkshire Fog	<i>Holcus lanatus</i>	D
---------------	-----------------------	---

Figure 1. Phase 1 Habitat Map: April 2013

Site D1A



Ecological Value: Site D1A

