

Summary Sheet

| | |
|----------------|----------------------------|
| Date | 02/05/2013 |
| Grid Reference | SE 417 065 |
| Site Area | 3.4 ha |
| Surveyor | Oliver Pescott, Wildscapes |

| | |
|-----------------|------------------------|
| Site Name | N2 |
| Site Ref Number | Park Springs, Houghton |

1 ASSESSMENT

Biodiversity interest (record presence by a cross as appropriate)

| Habitat | Present | Notes & Photo Refs |
|-----------------------------------|---------|---|
| Woodland | | |
| Scrub | X | Young willow & alder woodland scrub |
| Scattered trees | | |
| Species poor or defunct hedgerows | | |
| Species rich hedgerows | | |
| Amenity or improved grassland | | |
| Semi-improved grassland | X | Tussocky & unmanaged N2.2 |
| Unimproved grassland | | |
| Marshy grassland | X | N2.1 |
| Tall ruderals | | |
| Dwarf shrub heath | | |
| Lichen/bryophyte heath | | |
| Reedbed | | |
| Swamp | | |
| Standing water (ponds) | | |
| Flowing watercourses | | |
| Arable / cultivated farmland | | |
| Other: Bare ground | X | Tracks through the grassland N2.3, N2.4 |

| Species | Present (seen) | Quality of habitat | | |
|---------------|----------------|--------------------|-----|------|
| | | Low | Mod | High |
| Plants | X | | X | |
| Invertebrates | X | | X | |
| Amphibians | | X | | |
| Reptiles | | | X | |
| Birds | X | X | | |
| Mammals | | | X | |
| Other | | | | |

Influences on external features

| | |
|---------------------------------|--|
| On watercourse | No |
| On wildlife corridor | Part of open land along the A6195 and links to the River Dearne |
| Would lead to habitat isolation | No |
| Proximity/linkage to SSSI/LNR | No |
| Other | The River Dearne is within 100 metres to the west and south of the site. There is a large body of water 300 metres north-west. |

2 RECOMMENDATION

| | Mitigation measures / design considerations | Score |
|--|--|-------|
| a) Development of the site would have minimal detrimental local ecological impact. | | |
| b) Development of the site would result in some adverse local ecological impact but there is scope for mitigation. | The areas of marshy grassland have significant ecological value, but due to their location may be difficult to retain if the site is developed. If the marsh areas cannot be retained, suitable wetland features should be incorporated into the development as replacement habitat. | 3 |
| c) Development of the site would result in detrimental ecological impacts. | | |

3 PHOTOGRAPHIC DETAILS

Photograph locations are recorded on the site map.

| Photo Ref | Caption |
|-----------|-------------------------|
| N2.1 | Marshy grassland |
| N2.2 | Semi-improved grassland |
| N2.3 | Track to the south |
| N2.4 | Track along west edge |

4 FURTHER INFORMATION

Brief Site Description

This site includes areas of tussocky semi-improved grassland, patches of young scrubby woodland and scattered areas of marshy grassland.

Additional comments / information

With reference to the data search, no significant issues for protected or priority species have arisen for this site.

Figure 1 shows the Phase 1 Habitat map for the site.
Figure 2 shows the areas with significant ecological value.

Site: N2
Grid Ref: SE 417 065
Surveyor: Oliver Pescott
Date: 02/05/2013

Site Description

This post-industrial site is bordered by the A6195 to the east and the embankment of a dismantled railway to the west. The northern end of the site is dominated by young, scrubby woodland. Where the site borders the A6195, the road embankment contains abundant Alder (*Alnus glutinosa*), which is likely to have been planted. This Alder woodland has been filled in by abundant Willow species (*Salix* spp.) and Silver Birch (*Betula pendula*) scrub, and it is these species that dominate the scrubby woodland that spreads south across the site.

The ground flora varies between tussocky, poor semi-improved grassland and areas of marshy grassland that have formed in areas of impeded drainage. The site has been heavily disturbed by vehicles at some point in its history, and the dense network of ridges and furrows created by this activity has resulted in an interesting small-scale pattern of alternating marshy furrows with drier, tussocky grassland ridges. The tussocky grassland was dominated by Red Fescue (*Festuca rubra*) and Yorkshire Fog (*Holcus lanatus*), with occasional forbs such as Red Clover (*Trifolium pratense*) and Dandelion (*Taraxacum officinale* agg.) Where this grassland occurs on the plateau and slopes of the dismantled railway embankment, Ox-eye Daisy (*Leucanthemum vulgare*) becomes a larger component of the sward.

As this drier sward grades into marshier ground, the rushes Soft Rush (*Juncus effusus*) and Hard Rush (*Juncus inflexus*) both appear, with frequent Creeping Bent (*Agrostis stolonifera*) and, in places, abundant Pointed Spear-moss (*Calliergonella cuspidata*) and occasional Ribbed Bog-moss (*Aulacomnium palustre*). In the wettest areas of the marshy sward, Jointed Rush (*Juncus articulatus*), Sharp-flowered Rush (*Juncus acutiflorus*), Common Reed (*Phragmites australis*), Bulrush (*Typha latifolia*), and Velvet Bent (*Agrostis canina*) all become frequent, with an occasional creeping Forget-me-not (*Myosotis* cf. *secunda*). In one particular marshy area, at the base of the dismantled railway embankment, mire species rare in the lowlands of South Yorkshire, such as Common Cotton Grass (*Eriophorum angustifolium*) and Round-leaved Water Crowfoot (*Ranunculus omiophyllus*), are present.

Two animal records made at this site during the survey are the ground beetle *Nebria salina*, and the Brimstone butterfly (*Gonepteryx rhamni*). Old Mallard (*Anas platyrhynchos*) eggs were also found on the ground in the wetter areas of the site.

Habitat Target Notes

TN1 Young, scrubby woodland with planted *Alnus glutinosa* and abundant self-seeded *Betula pendula* and *Salix* species.

TN2 A typical gradation to the marshy grassland common on this site. *Juncus effusus*, *Agrostis stolonifera* and *Calliergonella cuspidata* become more abundant, and *Salix* species become dominant in the shrub layer.

TN3 A large area of marshy grassland, with *Juncus articulatus*, *Typha latifolia*, *Aulacomnium palustre*, *Juncus acutiflorus*, *Phragmites australis*, *Agrostis canina*, *Myotis* cf. *secunda*, *Ranunculus repens*, *Ranunculus omiophyllus* and *Eriophorum angustifolium*.



N2.1 Marshy grassland



N2.2 Semi-improved grassland



N2.3 Track to the south



N2.4 Track along west edge

Species List for N2

DAFOR Scale

D=dominant, A=abundant, F=frequent, O=occasional, R=rare, L=locally

Young scrubby woodland

Trees and Shrubs

| | | |
|--------------|------------------------|---|
| Alder | <i>Alnus glutinosa</i> | A |
| Silver Birch | <i>Betula pendula</i> | A |
| Willow | <i>Salix</i> sp. | O |

Herbs

| | | |
|--------------------|----------------------------|---|
| Common Mouse-ear | <i>Cerastium fontanum</i> | R |
| | <i>Leucanthemum</i> | |
| Oxeye Daisy | <i>vulgare</i> | R |
| Wood Forget-me-not | <i>Myosotis sylvatica</i> | R |
| Ribwort Plantain | <i>Plantago lanceolata</i> | O |
| Common Ragwort | <i>Senecio jacobaea</i> | R |
| Dandelion | <i>Taraxacum</i> agg. | O |
| Red Clover | <i>Trifolium pratense</i> | O |
| Coltsfoot | <i>Tussilago farfara</i> | R |
| Common Vetch | <i>Vicia sativa</i> | R |

Grasses, sedges and rushes

| | | |
|---------------|---------------------------|---|
| Cock's-foot | <i>Dactylis glomerata</i> | F |
| Red Fescue | <i>Festuca rubra</i> | A |
| Yorkshire Fog | <i>Holcus lanatus</i> | A |
| Soft Rush | <i>Juncus effusus</i> | O |
| Hard Rush | <i>Juncus inflexus</i> | O |

Marshy grassland

Trees and Shrubs

Herbs

| | | |
|-----------------------------|------------------------------------|----|
| Cat's-ear | <i>Hypochaeris radicata</i> | R |
| cf. Creeping Forget-me-not | <i>Myosotis</i> cf. <i>secunda</i> | O |
| Selfheal | <i>Prunella vulgaris</i> | R |
| Round-leaved Water Crowfoot | <i>Ranunculus omiophyllus</i> | R |
| Creeping Buttercup | <i>Ranunculus repens</i> | LF |

Grasses, sedges and rushes

| | | |
|---------------------|---------------------------------|----|
| Velvet Bent | <i>Agrostis canina</i> | A |
| Creeping Bent | <i>Agrostis stolonifera</i> | F |
| Common Cotton-grass | <i>Eriophorum angustifolium</i> | LF |
| Yorkshire Fog | <i>Holcus lanatus</i> | F |
| Sharp-flowered Rush | <i>Juncus acutiflorus</i> | O |
| Jointed Rush | <i>Juncus articulatus</i> | O |
| Soft Rush | <i>Juncus effusus</i> | A |

Mosses

| | | |
|--------------------|---------------------------------|---|
| Ribbed Bog-moss | <i>Aulacomnium palustre</i> | R |
| Pointed Spear-moss | <i>Calliergonella cuspidata</i> | A |

Figure 1. Phase 1 Habitat Map: May 2013
Site N2

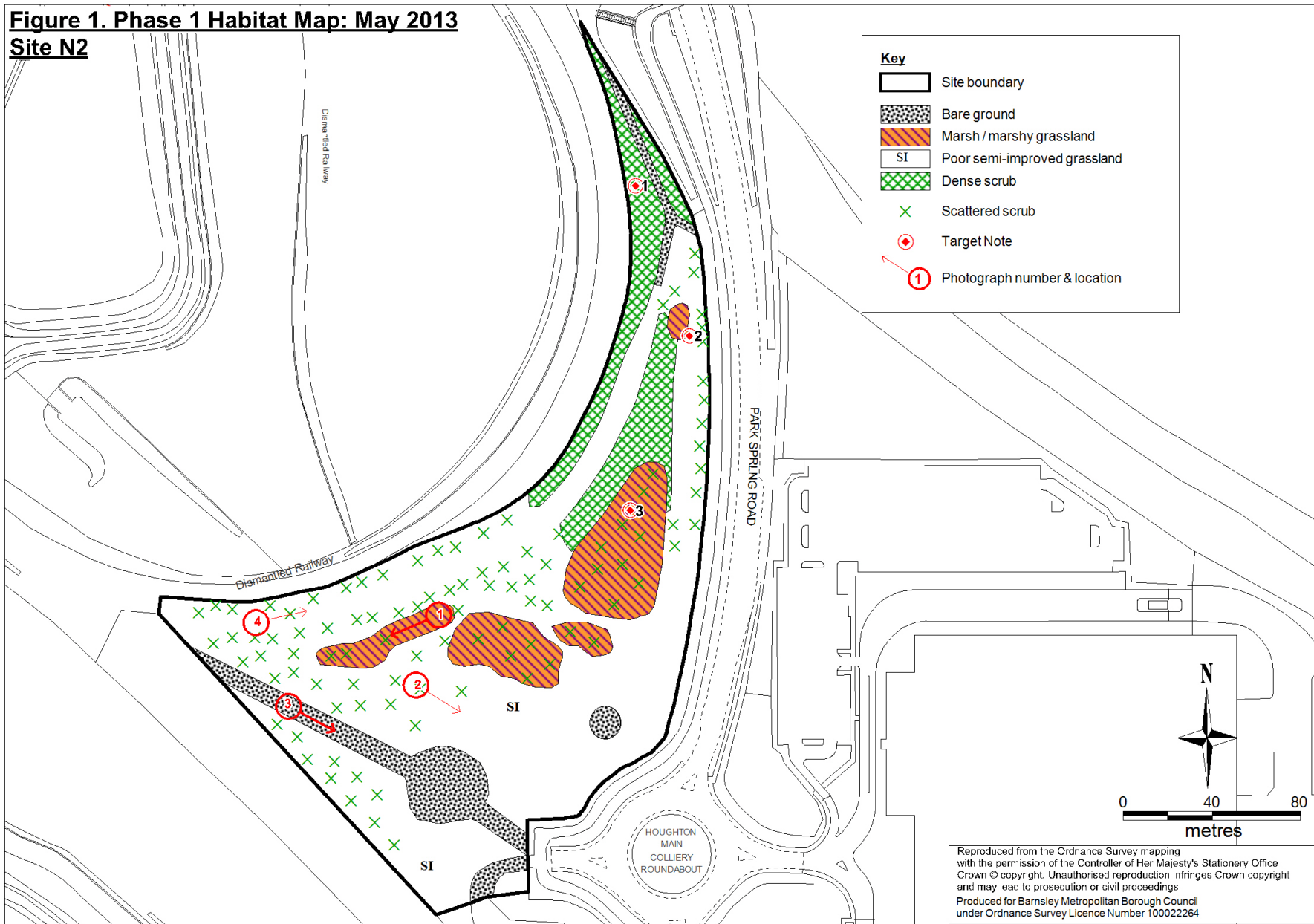
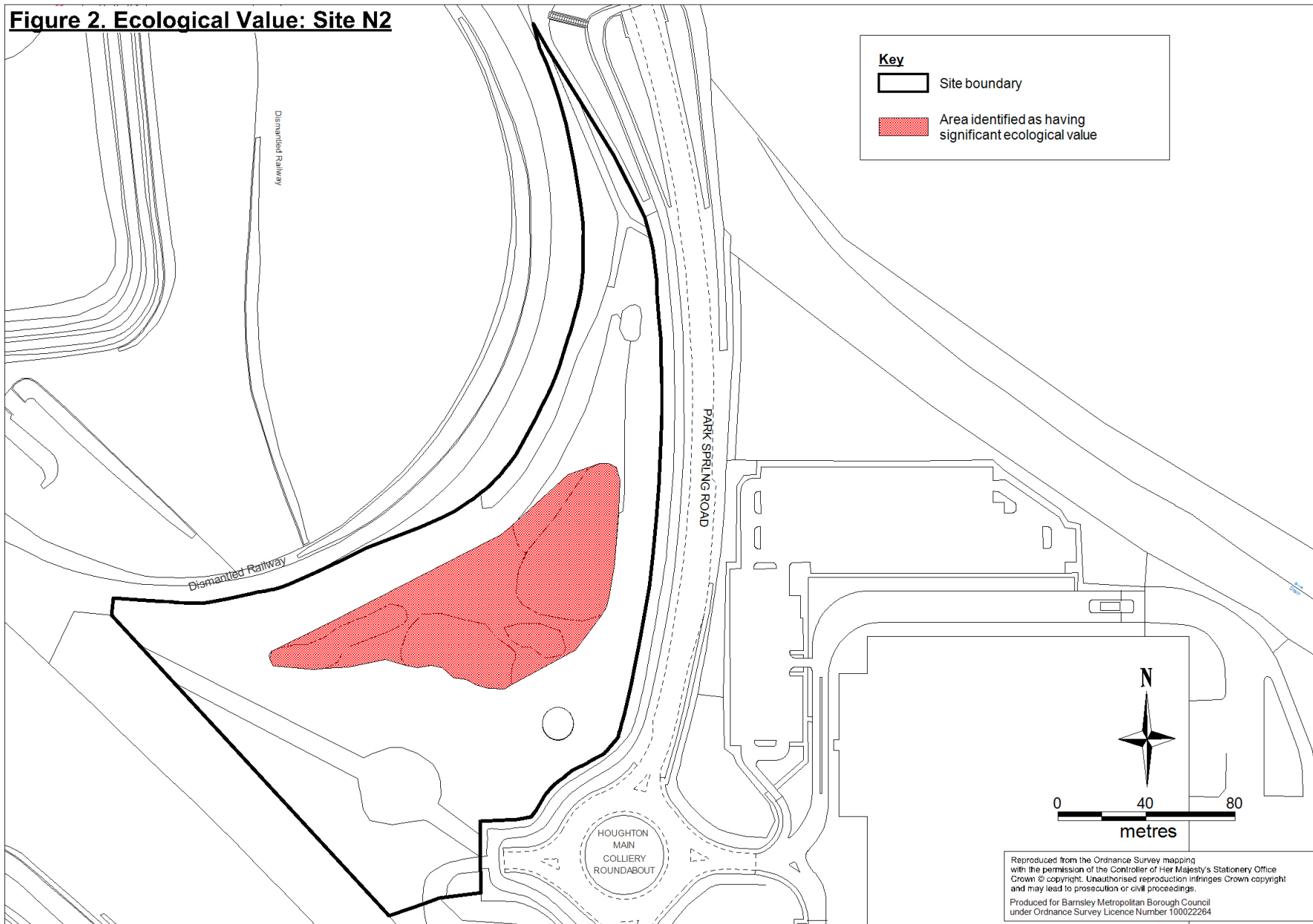


Figure 2. Ecological Value: Site N2



Data Search – Local Records Centre

Notable species recorded within 1km of the site in the last 10 years (2003 – 2013)

A search for badger records has been carried out separately.

| Group | Scientific Name | Common Name | Year | Location |
|--------------|--------------------------|--------------------|-------------|---|
| amphibian | <i>Bufo bufo</i> | Common Toad | 2007 | Cudworth pond 6 |
| amphibian | <i>Bufo bufo</i> | Common Toad | 2010 | Houghton pond 1 |
| amphibian | <i>Bufo bufo</i> | Common Toad | 2012 | Edderthorpe Ings |
| amphibian | <i>Bufo bufo</i> | Common Toad | 2012 | 'BARNSELY MBC' |
| amphibian | <i>Rana temporaria</i> | Common Frog | 2010 | Houghton pond 4 |
| amphibian | <i>Triturus vulgaris</i> | Smooth Newt | 2010 | Houghton pond 5 |
| amphibian | <i>Triturus vulgaris</i> | Smooth Newt | 2010 | Houghton pond 1 |
| amphibian | <i>Triturus vulgaris</i> | Smooth Newt | 2010 | Houghton pond 3 |
| bird | <i>Alauda arvensis</i> | Sky Lark | 2004 | Edderthorpe Ings |
| bird | <i>Alauda arvensis</i> | Skylark | 2005 | Edderthorpe Ings |
| bird | <i>Alauda arvensis</i> | Skylark | 2005 | Broomhill Flash & Wombwell Ings LWS |
| bird | <i>Alauda arvensis</i> | Skylark | 2007 | Old Moor & Wath Ings LWS |
| bird | <i>Alauda arvensis</i> | Skylark | 2009 | Edderthorpe Ings, between Little Houghton & Grimethorpe |
| bird | <i>Alauda arvensis</i> | Skylark | 2009 | Old Moor & Wath Ings LWS |
| bird | <i>Alauda arvensis</i> | Skylark | 2011 | Old Moor & Wath Ings LWS |
| bird | <i>Alauda arvensis</i> | Skylark | 2012 | New Park Spring, Grimethorpe |
| bird | <i>Alauda arvensis</i> | Skylark | 2013 | Darfield |
| bird | <i>Alauda arvensis</i> | Skylark | 2013 | Former Grimethorpe Colliery Tip |
| bird | <i>Alcedo atthis</i> | Kingfisher | 2005 | Broomhill Flash & Wombwell Ings LWS |
| bird | <i>Alcedo atthis</i> | Kingfisher | 2007 | River Dearne Valley wetlands, Dearne/Wombwell |
| bird | <i>Alcedo atthis</i> | Kingfisher | 2007 | Old Moor & Wath Ings LWS |
| bird | <i>Alcedo atthis</i> | Kingfisher | 2009 | Old Moor & Wath Ings LWS |
| bird | <i>Anas acuta</i> | Pintail | 2007 | Old Moor & Wath Ings LWS |
| bird | <i>Anas acuta</i> | Pintail | 2009 | Edderthorpe Ings, between Little Houghton & Grimethorpe |
| bird | <i>Anas acuta</i> | Pintail | 2009 | Old Moor & Wath Ings LWS |
| bird | <i>Anas acuta</i> | Pintail | 2011 | Old Moor & Wath Ings LWS |
| bird | <i>Anas clypeata</i> | Northern Shoveler | 2004 | Edderthorpe Ings |
| bird | <i>Anas clypeata</i> | Northern Shoveler | 2005 | Edderthorpe Ings, between Little Houghton & Grimethorpe |

| | | | | |
|------|---------------------------|---------------|------|---|
| bird | <i>Anas clypeata</i> | Shoveler | 2007 | Old Moor & Wath Ings LWS |
| bird | <i>Anas clypeata</i> | Shoveler | 2007 | Broomhill Flash |
| bird | <i>Anas clypeata</i> | Shoveler | 2009 | Edderthorpe Ings, between Little Houghton & Grimethorpe |
| bird | <i>Anas clypeata</i> | Shoveler | 2009 | Old Moor & Wath Ings LWS |
| bird | <i>Anas clypeata</i> | Shoveler | 2009 | Edderthorpe Ings |
| bird | <i>Anas clypeata</i> | Shoveler | 2011 | Old Moor & Wath Ings LWS |
| bird | <i>Anas clypeata</i> | Shoveler | 2011 | Edderthorpe Ings |
| bird | <i>Anas clypeata</i> | Shoveler | 2011 | Edderthorpe Ings, between Little Houghton & Grimethorpe |
| bird | <i>Anas querquedula</i> | Garganey | 2005 | Broomhill Flash & Wombwell Ings LWS |
| bird | <i>Anas querquedula</i> | Garganey | 2007 | Edderthorpe Ings, between Little Houghton & Grimethorpe |
| bird | <i>Anas querquedula</i> | Garganey | 2007 | Old Moor & Wath Ings LWS |
| bird | <i>Anas querquedula</i> | Garganey | 2009 | Edderthorpe Ings, between Little Houghton & Grimethorpe |
| bird | <i>Anas querquedula</i> | Garganey | 2011 | Edderthorpe Ings, between Little Houghton & Grimethorpe |
| bird | <i>Anas querquedula</i> | Garganey | 2011 | Old Moor & Wath Ings LWS |
| bird | <i>Anas strepera</i> | Gadwall | 2004 | Edderthorpe Ings |
| bird | <i>Anas strepera</i> | Gadwall | 2005 | Edderthorpe Ings, between Little Houghton & Grimethorpe |
| bird | <i>Anas strepera</i> | Gadwall | 2006 | Broomhill Flash |
| bird | <i>Anas strepera</i> | Gadwall | 2007 | Old Moor & Wath Ings LWS |
| bird | <i>Anas strepera</i> | Gadwall | 2007 | Broomhill Flash |
| bird | <i>Anas strepera</i> | Gadwall | 2009 | Edderthorpe Ings, between Little Houghton & Grimethorpe |
| bird | <i>Anas strepera</i> | Gadwall | 2009 | Old Moor & Wath Ings LWS |
| bird | <i>Anas strepera</i> | Gadwall | 2009 | Edderthorpe Ings |
| bird | <i>Anas strepera</i> | Gadwall | 2010 | Old Moor & Wath Ings LWS |
| bird | <i>Anas strepera</i> | Gadwall | 2011 | Old Moor & Wath Ings LWS |
| bird | <i>Anas strepera</i> | Gadwall | 2011 | Edderthorpe Ings, between Little Houghton & Grimethorpe |
| bird | <i>Anser anser</i> | Greylag Goose | 2007 | Old Moor & Wath Ings LWS |
| bird | <i>Anser anser</i> | Greylag Goose | 2009 | Edderthorpe Ings, between Little Houghton & Grimethorpe |
| bird | <i>Anser anser</i> | Greylag Goose | 2009 | Old Moor & Wath Ings LWS |
| bird | <i>Anser anser</i> | Greylag Goose | 2009 | Edderthorpe Ings |
| bird | <i>Anser anser</i> | Greylag Goose | 2011 | Old Moor & Wath Ings LWS |
| bird | <i>Botaurus stellaris</i> | Bittern | 2009 | Old Moor & Wath Ings LWS |
| bird | <i>Bucephala clangula</i> | Goldeneye | 2007 | Old Moor & Wath Ings LWS |

| | | | | |
|------|---------------------------|----------------------|------|---|
| bird | <i>Bucephala clangula</i> | Goldeneye | 2009 | Old Moor & Wath Ings LWS |
| bird | <i>Bucephala clangula</i> | Goldeneye | 2011 | Old Moor & Wath Ings LWS |
| bird | <i>Calidris maritima</i> | Purple Sandpiper | 2007 | Old Moor & Wath Ings LWS |
| bird | <i>Charadrius dubius</i> | Little Ringed Plover | 2005 | Edderthorpe Ings |
| bird | <i>Charadrius dubius</i> | Little Ringed Plover | 2005 | Broomhill Flash & Wombwell Ings LWS |
| bird | <i>Charadrius dubius</i> | Little Ringed Plover | 2007 | Broomhill Flash |
| bird | <i>Charadrius dubius</i> | Little Ringed Plover | 2007 | Old Moor & Wath Ings LWS |
| bird | <i>Charadrius dubius</i> | Little Ringed Plover | 2007 | Ferry Moor wader scrape |
| bird | <i>Charadrius dubius</i> | Little Ringed Plover | 2009 | Old Moor & Wath Ings LWS |
| bird | <i>Charadrius dubius</i> | Little Ringed Plover | 2009 | Edderthorpe Ings, between Little Houghton & Grimethorpe |
| bird | <i>Charadrius dubius</i> | Little Ringed Plover | 2010 | Little Houghton Ings |
| bird | <i>Charadrius dubius</i> | Little Ringed Plover | 2011 | Old Moor & Wath Ings LWS |
| bird | <i>Charadrius dubius</i> | Little Ringed Plover | 2011 | Edderthorpe Ings, between Little Houghton & Grimethorpe |
| bird | <i>Charadrius dubius</i> | Little Ringed Plover | 2012 | Little Houghton Ings |
| bird | <i>Chlidonias niger</i> | Black Tern | 2007 | Old Moor & Wath Ings LWS |
| bird | <i>Chlidonias niger</i> | Black Tern | 2011 | Edderthorpe Ings, between Little Houghton & Grimethorpe |
| bird | <i>Coturnix coturnix</i> | Quail | 2011 | Edderthorpe Ings, between Little Houghton & Grimethorpe |
| bird | <i>Cygnus cygnus</i> | Whooper Swan | 2007 | Old Moor & Wath Ings LWS |
| bird | <i>Cygnus cygnus</i> | Whooper Swan | 2009 | Edderthorpe Ings, between Little Houghton & Grimethorpe |
| bird | <i>Cygnus cygnus</i> | Whooper Swan | 2010 | Old Moor & Wath Ings LWS |
| bird | <i>Cygnus cygnus</i> | Whooper Swan | 2010 | Edderthorpe Ings |
| bird | <i>Cygnus olor</i> | Mute Swan | 2004 | Edderthorpe Ings |
| bird | <i>Cygnus olor</i> | Mute Swan | 2005 | Edderthorpe Ings, between Little Houghton & Grimethorpe |
| bird | <i>Cygnus olor</i> | Mute Swan | 2007 | Old Moor & Wath Ings LWS |
| bird | <i>Cygnus olor</i> | Mute Swan | 2007 | Broomhill Flash |
| bird | <i>Cygnus olor</i> | Mute Swan | 2009 | Edderthorpe Ings, between Little Houghton & Grimethorpe |
| bird | <i>Cygnus olor</i> | Mute Swan | 2009 | Old Moor & Wath Ings LWS |
| bird | <i>Cygnus olor</i> | Mute Swan | 2009 | Edderthorpe Ings |
| bird | <i>Cygnus olor</i> | Mute Swan | 2010 | Old Moor & Wath Ings LWS |
| bird | <i>Cygnus olor</i> | Mute Swan | 2011 | Brampton |
| bird | <i>Cygnus olor</i> | Mute Swan | 2011 | Old Moor & Wath Ings LWS |
| bird | <i>Cygnus olor</i> | Mute Swan | 2011 | Edderthorpe Ings, between Little Houghton & Grimethorpe |

| | | | | |
|------|---------------------------------|--------------------|------|---|
| bird | <i>Cygnus olor</i> | Mute Swan | 2011 | Wath Ings |
| bird | <i>Falco peregrinus</i> | Peregrine | 2007 | Old Moor & Wath Ings LWS |
| bird | <i>Falco peregrinus</i> | Peregrine | 2009 | Edderthorpe Ings, between Little Houghton & Grimethorpe |
| bird | <i>Falco peregrinus</i> | Peregrine | 2009 | Old Moor & Wath Ings LWS |
| bird | <i>Falco subbuteo</i> | Hobby | 2007 | Old Moor & Wath Ings LWS |
| bird | <i>Falco subbuteo</i> | Hobby | 2007 | Broomhill Flash & Wombwell Ings LWS |
| bird | <i>Falco subbuteo</i> | Hobby | 2010 | Adwick Washlands |
| bird | <i>Falco tinnunculus</i> | Kestrel | 2007 | Broomhill Flash |
| bird | <i>Falco tinnunculus</i> | Kestrel | 2007 | Old Moor & Wath Ings LWS |
| bird | <i>Falco tinnunculus</i> | Kestrel | 2009 | Old Moor & Wath Ings LWS |
| bird | <i>Falco tinnunculus</i> | Kestrel | 2009 | Edderthorpe Ings, between Little Houghton & Grimethorpe |
| bird | <i>Falco tinnunculus</i> | Kestrel | 2010 | Broomhill Flash |
| bird | <i>Falco tinnunculus</i> | Kestrel | 2011 | Old Moor & Wath Ings LWS |
| bird | <i>Falco tinnunculus</i> | Kestrel | 2011 | Wath Ings |
| bird | <i>Fringilla montifringilla</i> | Brambling | 2009 | Old Moor & Wath Ings LWS |
| bird | <i>Fringilla montifringilla</i> | Brambling | 2010 | Old Moor & Wath Ings LWS |
| bird | <i>Fringilla montifringilla</i> | Brambling | 2011 | Old Moor & Wath Ings LWS |
| bird | <i>Gallinago gallinago</i> | Snipe | 2006 | Broomhill Flash |
| bird | <i>Gallinago gallinago</i> | Snipe | 2007 | River Dearne Valley wetlands, Dearne/Wombwell |
| bird | <i>Gallinago gallinago</i> | Snipe | 2007 | Old Moor & Wath Ings LWS |
| bird | <i>Gallinago gallinago</i> | Snipe | 2007 | Broomhill Flash |
| bird | <i>Gallinago gallinago</i> | Snipe | 2009 | Edderthorpe Ings, between Little Houghton & Grimethorpe |
| bird | <i>Gallinago gallinago</i> | Snipe | 2009 | Old Moor & Wath Ings LWS |
| bird | <i>Gallinago gallinago</i> | Snipe | 2011 | Old Moor & Wath Ings LWS |
| bird | <i>Gallinago gallinago</i> | Snipe | 2012 | Little Houghton Ings |
| bird | <i>Lanius collurio</i> | Red-Backed Shrike | 2010 | Broomhill Flash |
| bird | <i>Larus melanocephalus</i> | Mediterranean Gull | 2009 | Old Moor & Wath Ings LWS |
| bird | <i>Larus melanocephalus</i> | Mediterranean Gull | 2011 | Old Moor & Wath Ings LWS |
| bird | <i>Larus ridibundus</i> | Black-Headed Gull | 2006 | Broomhill Flash |
| bird | <i>Larus ridibundus</i> | Black-headed Gull | 2007 | Old Moor & Wath Ings LWS |
| bird | <i>Larus ridibundus</i> | Black-Headed Gull | 2007 | Broomhill Flash |
| bird | <i>Larus ridibundus</i> | Black-Headed Gull | 2009 | Edderthorpe Ings, between Little Houghton & Grimethorpe |

| | | | | |
|------|--------------------------|-----------------------|------|---|
| bird | <i>Larus ridibundus</i> | Black-Headed Gull | 2009 | Old Moor & Wath Ings LWS |
| bird | <i>Larus ridibundus</i> | Black-Headed Gull | 2011 | Brampton |
| bird | <i>Larus ridibundus</i> | Black-Headed Gull | 2011 | Old Moor & Wath Ings LWS |
| bird | <i>Larus ridibundus</i> | Black-Headed Gull | 2011 | Edderthorpe Ings, between Little Houghton & Grimethorpe |
| bird | <i>Larus ridibundus</i> | Black-Headed Gull | 2011 | Wath Ings |
| bird | <i>Larus ridibundus</i> | Black-Headed Gull | 2012 | Edderthorpe Ings |
| bird | <i>Larus ridibundus</i> | Black-Headed Gull | 2013 | Edderthorpe Ings |
| bird | <i>Larus ridibundus</i> | Black-Headed Gull | 2013 | Little Houghton |
| bird | <i>Limosa limosa</i> | Black-tailed Godwit | 2007 | Old Moor & Wath Ings LWS |
| bird | <i>Limosa limosa</i> | Black-Tailed Godwit | 2007 | Edderthorpe Ings |
| bird | <i>Limosa limosa</i> | Black-Tailed Godwit | 2007 | Broomhill Flash & Wombwell Ings LWS |
| bird | <i>Limosa limosa</i> | Black-Tailed Godwit | 2009 | Old Moor & Wath Ings LWS |
| bird | <i>Limosa limosa</i> | Black-Tailed Godwit | 2009 | Edderthorpe Ings, between Little Houghton & Grimethorpe |
| bird | <i>Limosa limosa</i> | Black-Tailed Godwit | 2010 | Adwick Washlands |
| bird | <i>Limosa limosa</i> | Black-Tailed Godwit | 2011 | Edderthorpe Ings, between Little Houghton & Grimethorpe |
| bird | <i>Limosa limosa</i> | Black-Tailed Godwit | 2012 | Edderthorpe Ings |
| bird | <i>Numenius phaeopus</i> | Whimbrel | 2011 | Edderthorpe Ings, between Little Houghton & Grimethorpe |
| bird | <i>Passer montanus</i> | Tree Sparrow | 2005 | Broomhill Flash & Wombwell Ings LWS |
| bird | <i>Passer montanus</i> | Tree Sparrow | 2007 | Broomhill Flash |
| bird | <i>Passer montanus</i> | Tree Sparrow | 2007 | Old Moor & Wath Ings LWS |
| bird | <i>Passer montanus</i> | Tree Sparrow | 2009 | Old Moor & Wath Ings LWS |
| bird | <i>Passer montanus</i> | Tree Sparrow | 2010 | 'BARNESLEY MBC' |
| bird | <i>Passer montanus</i> | Eurasian Tree Sparrow | 2010 | Old Moor & Wath Ings LWS |
| bird | <i>Passer montanus</i> | Tree Sparrow | 2011 | Old Moor & Wath Ings LWS |
| bird | <i>Perdix perdix</i> | Grey Partridge | 2005 | Broomhill Flash & Wombwell Ings LWS |
| bird | <i>Perdix perdix</i> | Grey Partridge | 2007 | Old Moor & Wath Ings LWS |
| bird | <i>Perdix perdix</i> | Grey Partridge | 2009 | Old Moor & Wath Ings LWS |
| bird | <i>Perdix perdix</i> | Grey Partridge | 2010 | Adwick Washlands |
| bird | <i>Perdix perdix</i> | Grey Partridge | 2011 | Old Moor & Wath Ings LWS |
| bird | <i>Perdix perdix</i> | Grey Partridge | 2012 | Little Houghton Ings |
| bird | <i>Perdix perdix</i> | Grey Partridge | 2012 | Broomhill Flash |
| bird | <i>Perdix perdix</i> | Grey Partridge | 2013 | Former Grimethorpe Colliery Tip |

| | | | | |
|------|-------------------------------|--------------------|------|---|
| bird | <i>Perdix perdix</i> | Grey Partridge | 2013 | Great Houghton |
| bird | <i>Phalacrocorax carbo</i> | Great Cormorant | 2005 | Edderthorpe Ings, between Little Houghton & Grimethorpe |
| bird | <i>Phalacrocorax carbo</i> | Cormorant | 2007 | Old Moor & Wath Ings LWS |
| bird | <i>Phalacrocorax carbo</i> | Cormorant | 2009 | Edderthorpe Ings, between Little Houghton & Grimethorpe |
| bird | <i>Phalacrocorax carbo</i> | Cormorant | 2009 | Old Moor & Wath Ings LWS |
| bird | <i>Phalacrocorax carbo</i> | Cormorant | 2009 | Edderthorpe Ings |
| bird | <i>Phalacrocorax carbo</i> | Great Cormorant | 2010 | Old Moor & Wath Ings LWS |
| bird | <i>Phalacrocorax carbo</i> | Cormorant | 2011 | Old Moor & Wath Ings LWS |
| bird | <i>Phalacrocorax carbo</i> | Cormorant | 2011 | Edderthorpe Ings, between Little Houghton & Grimethorpe |
| bird | <i>Phalacrocorax carbo</i> | Cormorant | 2012 | Edderthorpe Ings |
| bird | <i>Philomachus pugnax</i> | Ruff | 2007 | Old Moor & Wath Ings LWS |
| bird | <i>Philomachus pugnax</i> | Ruff | 2009 | Old Moor & Wath Ings LWS |
| bird | <i>Philomachus pugnax</i> | Ruff | 2011 | Edderthorpe Ings, between Little Houghton & Grimethorpe |
| bird | <i>Philomachus pugnax</i> | Ruff | 2011 | Old Moor & Wath Ings LWS |
| bird | <i>Platalea leucorodia</i> | Spoonbill | 2009 | Edderthorpe Ings, between Little Houghton & Grimethorpe |
| bird | <i>Platalea leucorodia</i> | Spoonbill | 2009 | Old Moor & Wath Ings LWS |
| bird | <i>Podiceps nigricollis</i> | Black-necked Grebe | 2007 | Old Moor & Wath Ings LWS |
| bird | <i>Podiceps nigricollis</i> | Black-Necked Grebe | 2011 | Old Moor & Wath Ings LWS |
| bird | <i>Porzana porzana</i> | Spotted Crake | 2009 | Edderthorpe Ings, between Little Houghton & Grimethorpe |
| bird | <i>Rallus aquaticus</i> | Water Rail | 2009 | Edderthorpe Ings, between Little Houghton & Grimethorpe |
| bird | <i>Rallus aquaticus</i> | Water Rail | 2009 | Old Moor & Wath Ings LWS |
| bird | <i>Recurvirostra avosetta</i> | Avocet | 2005 | Edderthorpe Ings |
| bird | <i>Recurvirostra avosetta</i> | Avocet | 2009 | Old Moor & Wath Ings LWS |
| bird | <i>Recurvirostra avosetta</i> | Avocet | 2011 | Edderthorpe Ings, between Little Houghton & Grimethorpe |
| bird | <i>Recurvirostra avosetta</i> | Avocet | 2011 | Edderthorpe Ings |
| bird | <i>Recurvirostra avosetta</i> | Avocet | 2011 | Old Moor & Wath Ings LWS |
| bird | <i>Regulus ignicapilla</i> | Firecrest | 2007 | River Dearne Valley wetlands, Dearne/Wombwell |
| bird | <i>Tringa glareola</i> | Wood Sandpiper | 2011 | Edderthorpe Ings, between Little Houghton & Grimethorpe |
| bird | <i>Tringa glareola</i> | Wood Sandpiper | 2011 | Edderthorpe Ings |
| bird | <i>Tringa glareola</i> | Wood Sandpiper | 2011 | Old Moor & Wath Ings LWS |
| bird | <i>Tringa nebularia</i> | Greenshank | 2007 | Old Moor & Wath Ings LWS |
| bird | <i>Tringa nebularia</i> | Greenshank | 2009 | Old Moor & Wath Ings LWS |

| | | | | |
|------|-------------------------|-----------------|------|---|
| bird | <i>Tringa nebularia</i> | Greenshank | 2011 | Edderthorpe Ings, between Little Houghton & Grimethorpe |
| bird | <i>Tringa nebularia</i> | Greenshank | 2011 | Edderthorpe Ings |
| bird | <i>Tringa nebularia</i> | Greenshank | 2011 | Old Moor & Wath Ings LWS |
| bird | <i>Tringa ochropus</i> | Green Sandpiper | 2007 | River Dearne Valley wetlands, Dearne/Wombwell |
| bird | <i>Tringa ochropus</i> | Green Sandpiper | 2007 | Old Moor & Wath Ings LWS |
| bird | <i>Tringa ochropus</i> | Green Sandpiper | 2009 | Old Moor & Wath Ings LWS |
| bird | <i>Tringa ochropus</i> | Green Sandpiper | 2009 | Edderthorpe Ings, between Little Houghton & Grimethorpe |
| bird | <i>Tringa ochropus</i> | Green Sandpiper | 2010 | Little Houghton Ings |
| bird | <i>Tringa ochropus</i> | Green Sandpiper | 2011 | Old Moor & Wath Ings LWS |
| bird | <i>Tringa ochropus</i> | Green Sandpiper | 2011 | Edderthorpe Ings, between Little Houghton & Grimethorpe |
| bird | <i>Tringa totanus</i> | Common Redshank | 2004 | Edderthorpe Ings |
| bird | <i>Tringa totanus</i> | Redshank | 2006 | Broomhill Flash |
| bird | <i>Tringa totanus</i> | Common Redshank | 2007 | River Dearne Valley wetlands, Dearne/Wombwell |
| bird | <i>Tringa totanus</i> | Common Redshank | 2007 | Old Moor & Wath Ings LWS |
| bird | <i>Tringa totanus</i> | Redshank | 2007 | Broomhill Flash |
| bird | <i>Tringa totanus</i> | Redshank | 2007 | Broomhill Flash & Wombwell Ings LWS |
| bird | <i>Tringa totanus</i> | Redshank | 2007 | Edderthorpe Ings |
| bird | <i>Tringa totanus</i> | Redshank | 2009 | Old Moor & Wath Ings LWS |
| bird | <i>Tringa totanus</i> | Redshank | 2009 | Edderthorpe Ings |
| bird | <i>Tringa totanus</i> | Redshank | 2010 | Little Houghton Ings |
| bird | <i>Tringa totanus</i> | Common Redshank | 2010 | Old Moor & Wath Ings LWS |
| bird | <i>Tringa totanus</i> | Redshank | 2011 | Old Moor & Wath Ings LWS |
| bird | <i>Tringa totanus</i> | Redshank | 2011 | Edderthorpe Ings, between Little Houghton & Grimethorpe |
| bird | <i>Turdus iliacus</i> | Redwing | 2007 | Old Moor & Wath Ings LWS |
| bird | <i>Turdus iliacus</i> | Redwing | 2009 | Old Moor & Wath Ings LWS |
| bird | <i>Turdus iliacus</i> | Redwing | 2011 | Old Moor & Wath Ings LWS |
| bird | <i>Turdus pilaris</i> | Fieldfare | 2007 | Old Moor & Wath Ings LWS |
| bird | <i>Turdus pilaris</i> | Fieldfare | 2009 | Old Moor & Wath Ings LWS |
| bird | <i>Tyto alba</i> | Barn Owl | 2005 | Broomhill Flash & Wombwell Ings LWS |
| bird | <i>Tyto alba</i> | Barn Owl | 2007 | Broomhill Flash |
| bird | <i>Tyto alba</i> | Barn Owl | 2009 | Old Moor & Wath Ings LWS |
| bird | <i>Tyto alba</i> | Barn Owl | 2010 | Broomhill Flash |

| | | | | |
|--------------------|---------------------------|-------------------|------|---|
| bird | <i>Vanellus vanellus</i> | Northern Lapwing | 2004 | Edderthorpe Ings |
| bird | <i>Vanellus vanellus</i> | Lapwing | 2005 | Broomhill Flash & Wombwell Ings LWS |
| bird | <i>Vanellus vanellus</i> | Lapwing | 2006 | Broomhill Flash |
| bird | <i>Vanellus vanellus</i> | Northern Lapwing | 2006 | Edderthorpe Ings, between Little Houghton & Grimethorpe |
| bird | <i>Vanellus vanellus</i> | Lapwing | 2007 | Broomhill Flash |
| bird | <i>Vanellus vanellus</i> | Lapwing | 2007 | Old Moor & Wath Ings LWS |
| bird | <i>Vanellus vanellus</i> | Lapwing | 2009 | Old Moor & Wath Ings LWS |
| bird | <i>Vanellus vanellus</i> | Northern Lapwing | 2009 | Edderthorpe Ings, between Little Houghton & Grimethorpe |
| bird | <i>Vanellus vanellus</i> | Lapwing | 2010 | Little Houghton Ings |
| bird | <i>Vanellus vanellus</i> | Lapwing | 2010 | Adwick Washlands |
| bird | <i>Vanellus vanellus</i> | Northern Lapwing | 2010 | Old Moor & Wath Ings LWS |
| bird | <i>Vanellus vanellus</i> | Lapwing | 2011 | Old Moor & Wath Ings LWS |
| bird | <i>Vanellus vanellus</i> | Lapwing | 2011 | Edderthorpe Ings, between Little Houghton & Grimethorpe |
| bird | <i>Vanellus vanellus</i> | Lapwing | 2011 | Edderthorpe Ings |
| reptile | <i>Lacerta vivipara</i> | Viviparous Lizard | 2012 | Edderthorpe Ings |
| terrestrial mammal | <i>Arvicola amphibius</i> | Water Vole | 2012 | 'BARNSELY MBC' |