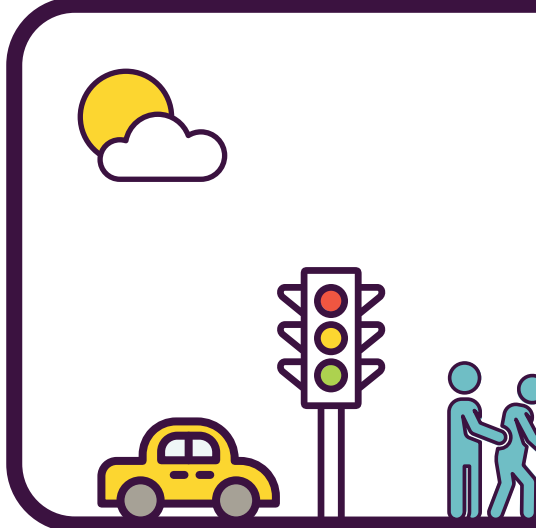
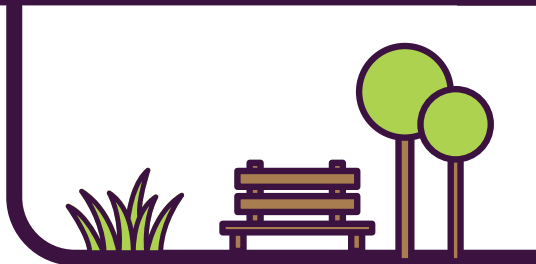


YOUR GUIDE

TO COUNCIL TAX
AND THE BUDGET
2020-2021



[BarnsleyCouncil](#)



[@BarnsleyCouncil](#)

**Working together
for a brighter future,
a better Barnsley.**



[Barnsley.gov.uk/budget](https://www.barnsley.gov.uk/budget)



[Barnsley.gov.uk/council-tax](https://www.barnsley.gov.uk/council-tax)



BARNSLEY
Metropolitan Borough Council



THIS GUIDE LOOKS AT...

- Where the funding for the budget comes from
- How the budget works
- Your council tax and how it's calculated
- How we'll spend and invest for the future

Every year, we set a budget for the financial year ahead. This sets out how we'll spend our money to provide you with the services you need – such as schools, social care, bin collections and road maintenance.

We have updated our three-year financial plan taking us up to 2023. This plan will be critical in helping us to prioritise, plan and prepare for the future. We've continued to work hard to prepare for the financial challenges we face and have achieved a balanced budget for 2020-21.

Since 2010, we've suffered extensive cuts from the government and made budgeted savings of an estimated £115 million, including £7.4 million to be made during 2020-21.

Whilst we have been able to set a balanced budget for 2020-21, the next 12 months will be critical in planning for the future especially with the ongoing uncertainty around local government funding. It's not going to be easy but we'll prepare for every financial scenario and maintain momentum as we continue to improve, grow and change to become a modern sustainable future council. We will also be looking at planning longer term in line with our vision for 2030.

THE REVENUE BUDGET

The **revenue budget** is spent on our day to day running costs. This includes paying our staff to deliver a range of vital services you and your family need each day; the cost to run and maintain our bin lorries to collect and dispose of your waste; the payment we make to care providers to help look after our elderly residents and the cost of opening and running our public buildings.

Council tax contributes towards funding the revenue budget.



In household terms, this is equivalent to you paying your household bills, fuelling your car, food shopping or insuring your home.

THE CAPITAL BUDGET

In addition to the revenue budget, we also have a separate **capital budget** which is used to pay for one-off investments and projects.

Capital funds are used to purchase or pay for the improvement of our assets that we need to deliver our services. Capital spend is usually large in value, provides long term benefit and enables ongoing sustainability – for example spend on land, equipment, buildings and road improvements.

Capital resources are not used to fund day to day running costs. Capital resources come from a number of places including selling off our assets, borrowing and specific grants and contributions.

£10 million of new general capital investment together with £12M of new investment specifically on housing growth will be spent from 2020-21 through the ongoing roll out of the capital investment programme.



In household terms, this is equivalent to you purchasing a new car, buying a house or furniture or your home. Capital items are often too expensive to pay for in one go.

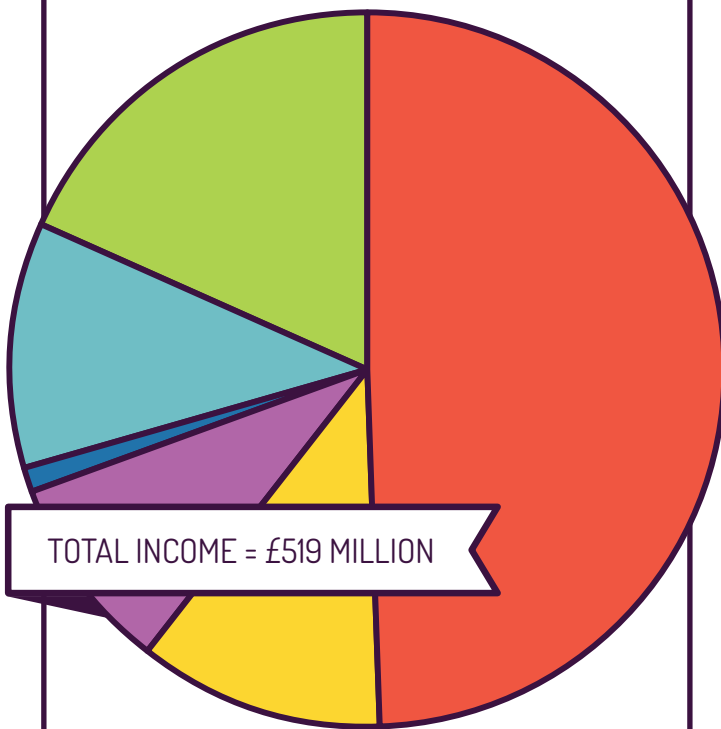




WHERE DOES THE REVENUE BUDGET COME FROM?

In 2020-21, we'll spend approximately **£519 million** providing you with a range of services. Our main source of funding comes from government funding and grants. As you'll see, council tax only contributes 19 percent towards the total amount of money we need.

The revenue budget comes from a combination of sources:



45% £236M, GOVERNMENT GRANTS

11% £57M, BUSINESS RATES

10% £49M, FEES & CHARGES

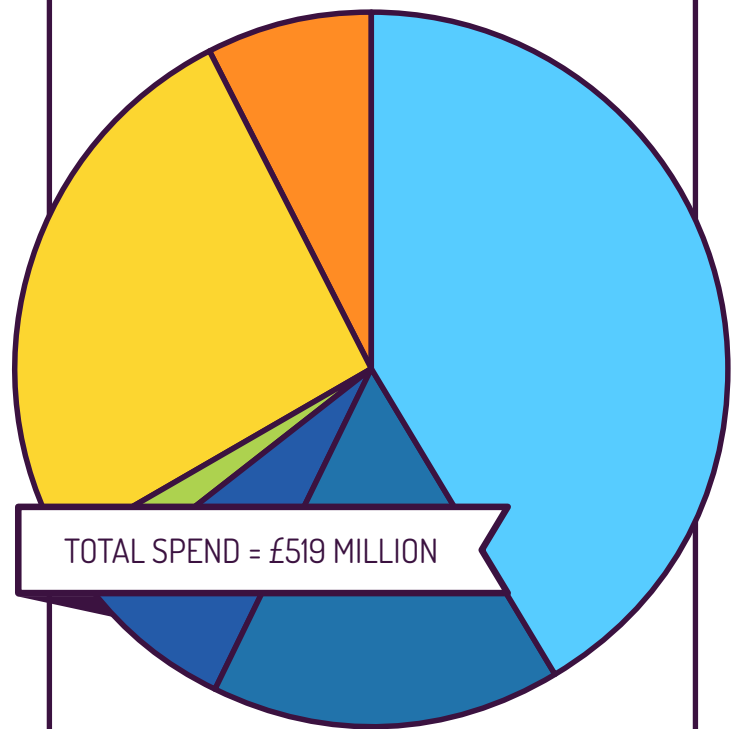
2% £8M, RENTS (NON HOUSING)

13% £68M, OTHER INCOME

19% £101M, COUNCIL TAX

HOW IS THE MONEY SPENT?

We prioritise spending in line with our three priorities: a thriving and vibrant economy, people achieving their potential and strong, resilient communities. Our services are structured to help us achieve this and deliver the outcomes we're committed to in our corporate plan. We're also supported by a lean core which is critical in our drive to be a more business-like and efficient organisation.



Included within the above totals are the following levy payments:

- Passenger Transport levy in Place £9.494M
- Flood Defence in Place £0.156M
- South Yorkshire Pensions Levy in Other £0.085M
- Includes £52M of Housing Benefit Payments in Core

£132M, PEOPLE 25%

£96M, PLACE 19%

£112M, COMMUNITIES 22%

£10M, PUBLIC HEALTH 2%

£131M, CORE SERVICES* 25%

£38M, OTHER 7%

*The above income excludes rental income from Council Housing totalling £72M.

A DAY IN THE LIFE OF OUR 2020-2021 BUDGET



This is how much we'll spend **EVERYDAY** to provide you and your family with the vital services you need:

Figures in thousands £000



£289*
EDUCATION AND
YOUTH SERVICES



£75
CHILDREN'S SOCIAL
CARE



£235
ADULT SOCIAL
CARE



£12
LEISURE, CULTURE
AND TOURISM



£43
ROAD
MAINTENANCE



£11
NEIGHBOURHOOD
SERVICES



£46
WASTE COLLECTION,
DISPOSAL AND RECYCLING



£3
HOUSING
(NON COUNCIL)



£32
SUPPORTING
BUSINESSES AND
CREATING JOBS



£7
PLANNING
AND BUILDING
CONTROL



£35
LIBRARIES
AND CUSTOMER
SERVICES



£21
AREA COUNCILS -
STRONGER, SAFER
COMMUNITIES



£26
PUBLIC TRANSPORT
LEVY



£2
PARKS AND OPEN
SPACES



£28
PUBLIC
HEALTH



£155**
HOUSING
BENEFITS

The amounts above do not include the costs of Core (support) services and other corporate costs.

We also spend £199,000 on council housing per day.

*includes schools

**includes housing benefit payments



We'll continue to invest and prioritise our spending in areas that help us continue our drive to change and improve, meet the increasing demand on our services and prepare for the financial uncertainty we continue face.

TAKE A LOOK AT SOME OF THE KEY AREAS OF INVESTMENT:

We're continuing our drive to invest in the ongoing redevelopment and sustainability of Barnsley's future.

EXCELLENCE IN CARE PROGRAMME

To look at training, development and pay for front line, direct support staff across the commissioned adult social care market. Initially, we're proposing an increase in pay for frontline, direct support staff to help stabilise and strengthen the sector.

PRINCIPAL TOWNS

Extra funding to further progress the Principal Towns project, making sure that the benefits from regeneration spread across the borough.

CLEAN AND TIDY

Extra focus on removing graffiti, weeds, fly-tipping, street cleaning, maintaining the roads, gullies and drainage.

COUNCIL TAX SUPPORT

A refreshed council tax support scheme to provide financial help for around 12,000 low-income households.

ZERO CARBON

Investment to help drive Barnsley's zero-carbon plans, through initiatives such as tree planting programmes.

MENTAL HEALTH

Supporting mental health initiatives such as mental health and physical activity guides, bereavement support for children and families, and delivering sessions for Y7 school pupils and staff around raising awareness of self-harm.

TRANSPORT LINKS

Investment in stronger transport links across the borough, such as improvements to the Dearne town link-road.

SEND

Increase capacity and support in special educational needs and disabilities (SEND) services.

WARD ALLIANCE

Increasing Ward Alliance budgets by £10,000 per ward so communities can continue to fund initiatives to help their areas thrive.

GREEN BARNLSLEY

Expanding the range of materials that can be recycled (like yoghurt pots) to make it easier for residents and businesses to do their bit to keep Barnsley clean and green.

TOWN CENTRE CAR PARKING

Making our town-centre car parks easier to use with digital displays, pay on exit capability, contactless payment, electric charging stations and CCTV.

Find out more about the budget and areas of investment at barnsley.gov.uk/budget.





ANNUAL INCREASE 3.9%

Despite our efforts to bridge the gaps in funding. Due to year on year cuts from central government, combined with inflation and the growing demand on our services, council tax will increase from April 2020 by 3.9 percent.*

This includes:

- 1.9% to help fund general services
- 2% to support adult social care

We know money is tight and have not taken this decision lightly. We've explored a number of options and done everything we can to minimise the impact of this increase on you and your family.

*This does not include the amount you pay towards police and fire authorities.

WHAT WILL THIS INCREASE MEAN TO YOU?

The financial impact of this increase will depend on the house band in which you live. The table below provides the weekly and annual increase based on your house band:

% INCREASE	0.00%	GENERAL INCREASE 1.9%	ADULT SOCIAL CARE INCREASE 2.0%	OVERALL INCREASE 3.9%	TOTAL COST 2020-21				
BAND	CURRENT ANNUAL CHARGE	ANNUAL INCREASE	WEEKLY INCREASE	ANNUAL INCREASE	WEEKLY INCREASE	ANNUAL INCREASE	WEEKLY INCREASE	TOTAL ANNUAL COST	WEEKLY COST
Band A-	£824.14	£15.66	£030	£16.48	£0.32	£32.14	£0.62	£856.28	£16.47
Band A	£988.98	£18.79	£036	£19.78	£0.38	£38.57	£0.74	£1,027.55	£19.76
Band B	£1,153.81	£21.93	£0.42	£23.08	£0.44	£45.01	£0.86	£1,198.82	£23.05
Band C	£1,318.64	£25.06	£0.48	£26.37	£0.51	£51.43	£0.99	£1,370.07	£26.35
Band D	£1,483.48	£28.19	£0.54	£29.67	£0.57	£57.86	£1.11	£1,541.34	£29.64
Band E	£1,813.13	£34.45	£0.66	£36.26	£0.70	£70.71	£1.36	£1,883.84	£36.23
Band F	£2,142.80	£40.72	£0.78	£42.86	£0.82	£83.58	£1.61	£2,226.38	£42.82
Band G	£2,472.45	£46.98	£0.90	£49.45	£0.95	£96.43	£1.85	£2,568.88	£49.40
Band H	£2,966.96	£56.38	£1.08	£59.34	£1.14	£115.72	£2.22	£3,082.68	£59.28

This does not include the amount you pay towards South Yorkshire Police and Crime Commissioner and South Yorkshire Fire and Rescue Authority.

MAJOR PRECEPTING AUTHORITIES

We also bill and collect council tax on behalf of the South Yorkshire Police and Crime Commissioner and South Yorkshire Fire and Rescue Authority. The table below shows the precept that will be charged by each authority in 2020/21, in addition to the amount paid directly to us.

PRECEPTING AUTHORITY	TOTAL PRECEPT	ANNUAL CONTRIBUTION										Additional information on budget papers can be viewed here:
HOUSE VALUATION BANDS	£	A-	A	B	C	D	E	F	G	H		
South Yorkshire Fire Authority	4,878,614	41.44	49.73	58.01	66.30	74.59	91.17	107.74	124.32	149.18	www.southyorks.gov.uk	
South Yorkshire Police Authority	12,953,162	110.02	132.03	154.03	176.04	198.04	242.05	286.06	330.07	396.08	www.southyorkshire-pcc.gov.uk	

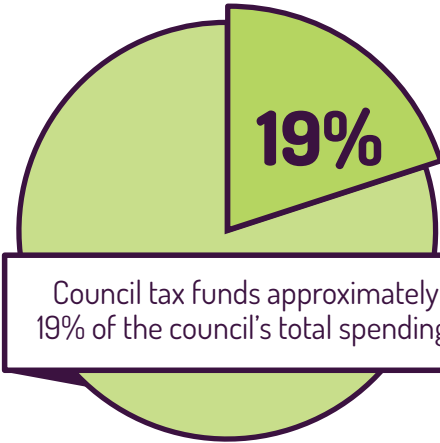
If you live in an area that has a Parish Council, you may also have to pay an additional amount set by the Parish Council which we also collect on behalf of the individual parish precepts. This amount can be found on our website: Barnsley.gov.uk/council-tax

THIS WEEK, YOU WERE SERVED BY BARNSELEY COUNCIL



It's important to remember that council tax is only a contribution towards the day to day running costs of delivering our services – it's not a charge for individual services.

Council tax only contributes towards around 19 percent of the total amount we'll spend delivering our services and does not contribute towards any capital investment schemes we deliver.



Here's a snap shot of what your council tax contributes towards in one week

162 TONNES
of waste was recycled



6.94 MILLION
square metres
of grass was cut

We've gritted and cleaned roads within the borough's **729 MILE** network



170,500
bins were emptied

67 INCIDENTS



of fly tipping were removed



8,381 BOOKS
including physical, audio, e-books and e-audio books were issued or renewed at local libraries per year.

80 CHILDREN were found loving foster homes per year

2961 older people were cared for including those receiving home support



It costs around **£10M A WEEK** to provide the services you need. **Council tax** only contributes **£1.94M** towards these costs!

...with a further £1.4M per week spent on Council Housing



HOW DO YOU WORK OUT HOW MUCH COUNCIL TAX YOU NEED TO CHARGE?

To work out how much council tax our residents need to pay, we work out how much money we need to deliver our services and then take away the money we receive from the government and other sources (see page 3). This leaves us with the funding gap or short fall we need to fund through council tax contributions.

WHY HAS MY COUNCIL TAX INCREASED?

Despite our efforts to make financial savings, we've faced repeated cuts from the government and a growing demand on our services which increases the gap in funding we need to fill. If we didn't increase council tax to fill this gap, we'd have to cut vital services as the funding is simply not there.

WHY IS MY COUNCIL TAX BILL MORE THAN MY FRIENDS?

The amount of council tax you pay depends on the property band you live in. All properties are banded into one of eight valuation bands (A to H) set by the government. If you live in an area with a Parish Council, you may also have to pay an additional precept set by them which is added to your bill.

WHY DO I HAVE TO PAY FOR SERVICES I DON'T USE?

Council tax is like income tax – it's not a charge for individual services, it contributes towards the overall running costs of delivering our services. It contributes towards lots of services you use daily or benefits everyone – such as your bin collections, road maintenance and public health. Some services are used by fewer residents depending on personal circumstances but remember, we never know what services we may need in the future.

HOW DO I PAY MY COUNCIL TAX?

You'll receive your bill in March which outlines payment options. You can pay the annual bill in one go or in monthly instalments. The easiest way to pay is to set up a direct debit – you can choose whether to pay over 10 or 12 months and you can even choose out of four dates when the payment leaves your account each month. Even better, register for a My Bentax account so you can access information about your bill, change payment details and even register for paperless e-billing. To do this, visit: barnsley.gov.uk/mybentax

WHAT DO I DO IF I CAN'T PAY MY COUNCIL TAX?

If you're struggling to pay your bill please let us know as soon as possible so we can make reasonable alternative payment arrangements. If you are on low income you may be entitled to council tax support. Visit our website barnsley.gov.uk/cts for further details.

The scheme for working age people has changed from April 2020. The new scheme is more generous and you may qualify.

WHAT WILL HAPPEN IF I MISS A PAYMENT?

If you don't pay your council tax bill on time, we'll send you a reminder telling you how much is overdue which you'll be required to pay within 7 days. If you fail to do so, you could lose the right to pay in instalments.

If payment is still not made as required, recovery proceedings may be taken against you. For more information, visit: barnsley.gov.uk/ctrecovery

COULD I BE ELIGIBLE FOR A DISCOUNT OR EXEMPTION?

Depending on your personal circumstances, you may be eligible for a discount on your council tax, for example, if you're the only person over 18 living in your home, you're a fulltime student or your property is unoccupied whilst undergoing major repairs. In some cases, you may be exempt from paying council tax at all. For more information about discounts and exemptions or to make an application, visit: barnsley.gov.uk/council-tax

HOW CAN I FIND OUT MORE INFORMATION?

Information about all aspects of council tax – including how to pay, telling us about changes to your circumstances; discounts and exemptions and managing your account online can be found all in one place on our website: barnsley.gov.uk/council-tax.