

Excess Winter Deaths in Barnsley

Produced by Helen Hickson, Business Improvement & Intelligence Team, BMBC (November 2018)
Businessimprovement&intelligence@barnsley.gov.uk



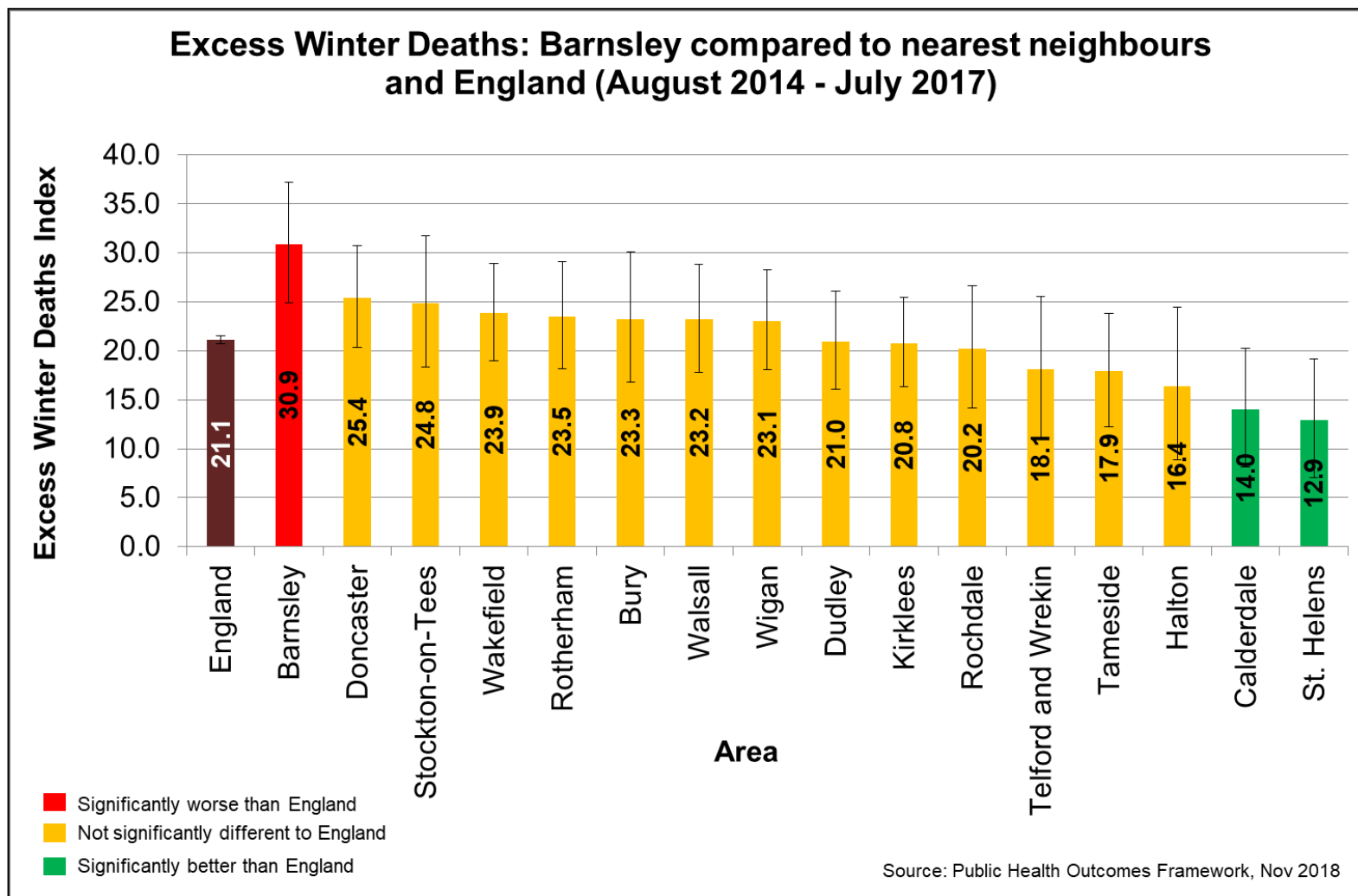
BARNSELEY
Metropolitan Borough Council

Key Points

- Barnsley's 2014 - 2017 excess winter deaths rate (30.9%) is significantly higher than the England rate of 21.1%.
- Barnsley's 2014 - 2017 rate of 30.9% is the highest during the period 2001-2004 to 2014-2017.
- During 2010 – 2017, there were 78.7% more deaths from influenza and pneumonia in winter months than in non-winter months.
- Large geographical differences exist within Barnsley. During the period 2010 - 2017, rates of excess winter deaths ranged from 4.4% in St Helen's ward to 47.4% in Darton East ward.
- Trend data at ward level show that three wards (Darton East, Rockingham and Wombwell) demonstrated an increase in excess winter death rates at each time point during the period 2006 - 2013 to 2010 - 2017.
- There is no direct correlation between increased levels of deprivation and higher levels of excess winter deaths.

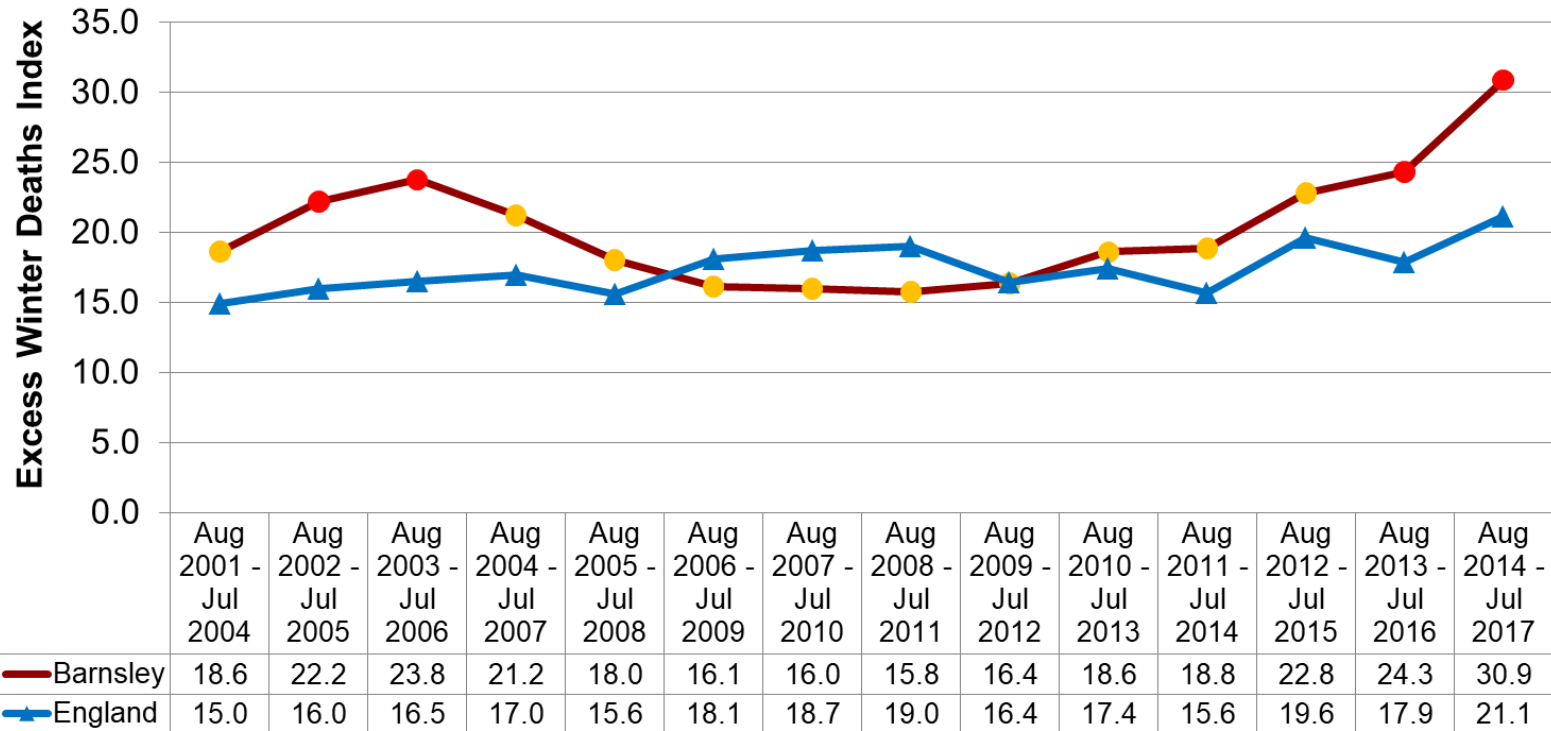


Excess Winter Deaths: Barnsley compared to nearest neighbours and England



Trend in Excess Winter Deaths: Barnsley and England

**Excess Winter Deaths (three years, all ages):
Barnsley and England
August 2001 - July 2004 to August 2014 - July 2017**



Source: Public Health Outcomes Framework (Nov 2018)

● Significantly HIGHER than England

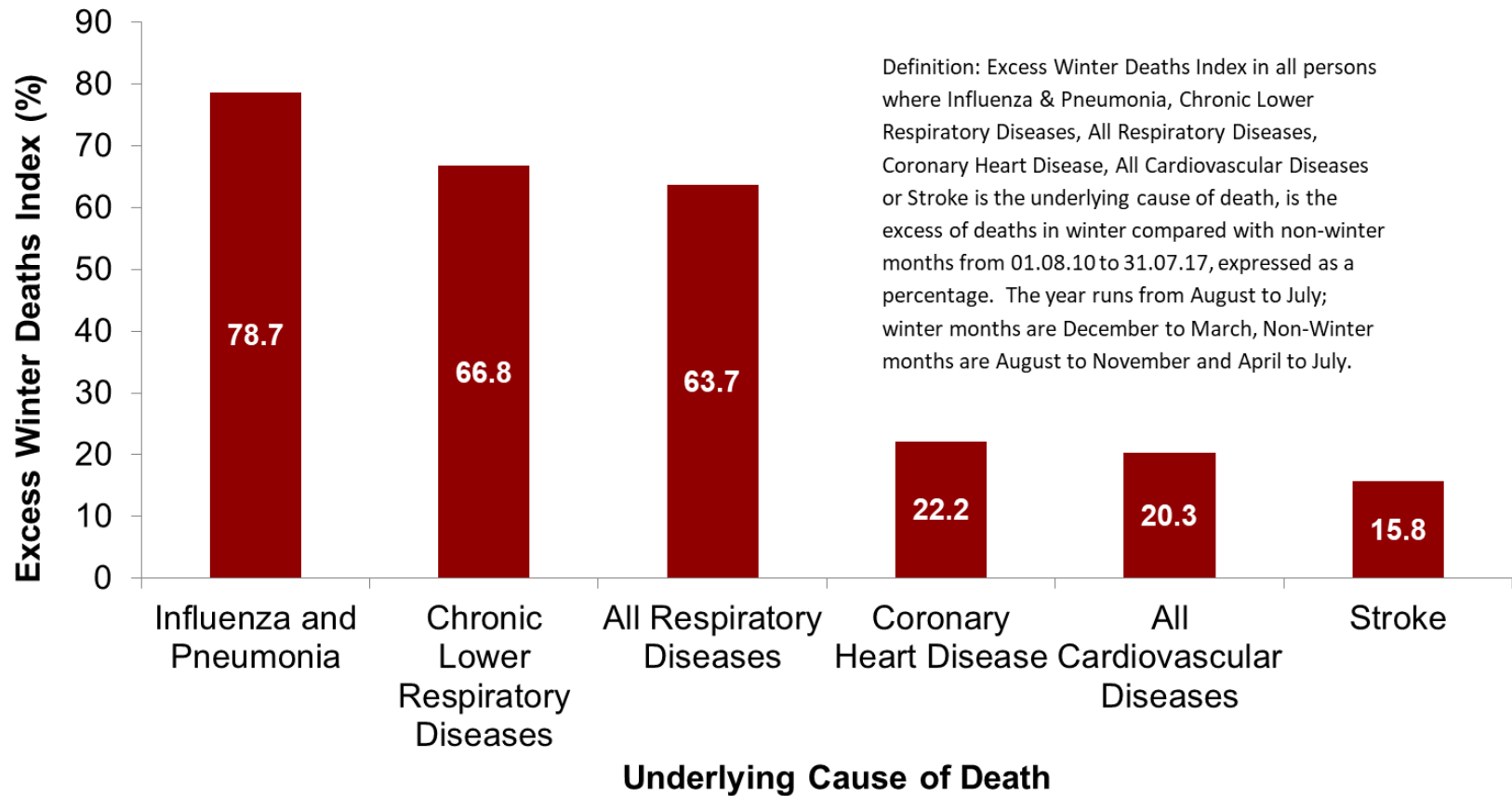
● Not significantly different to England



BARNSLEY
Metropolitan Borough Council

Excess Winter Deaths by Cause

Excess Winter Deaths Index by Selected Underlying Cause, Barnsley (2010-2017)

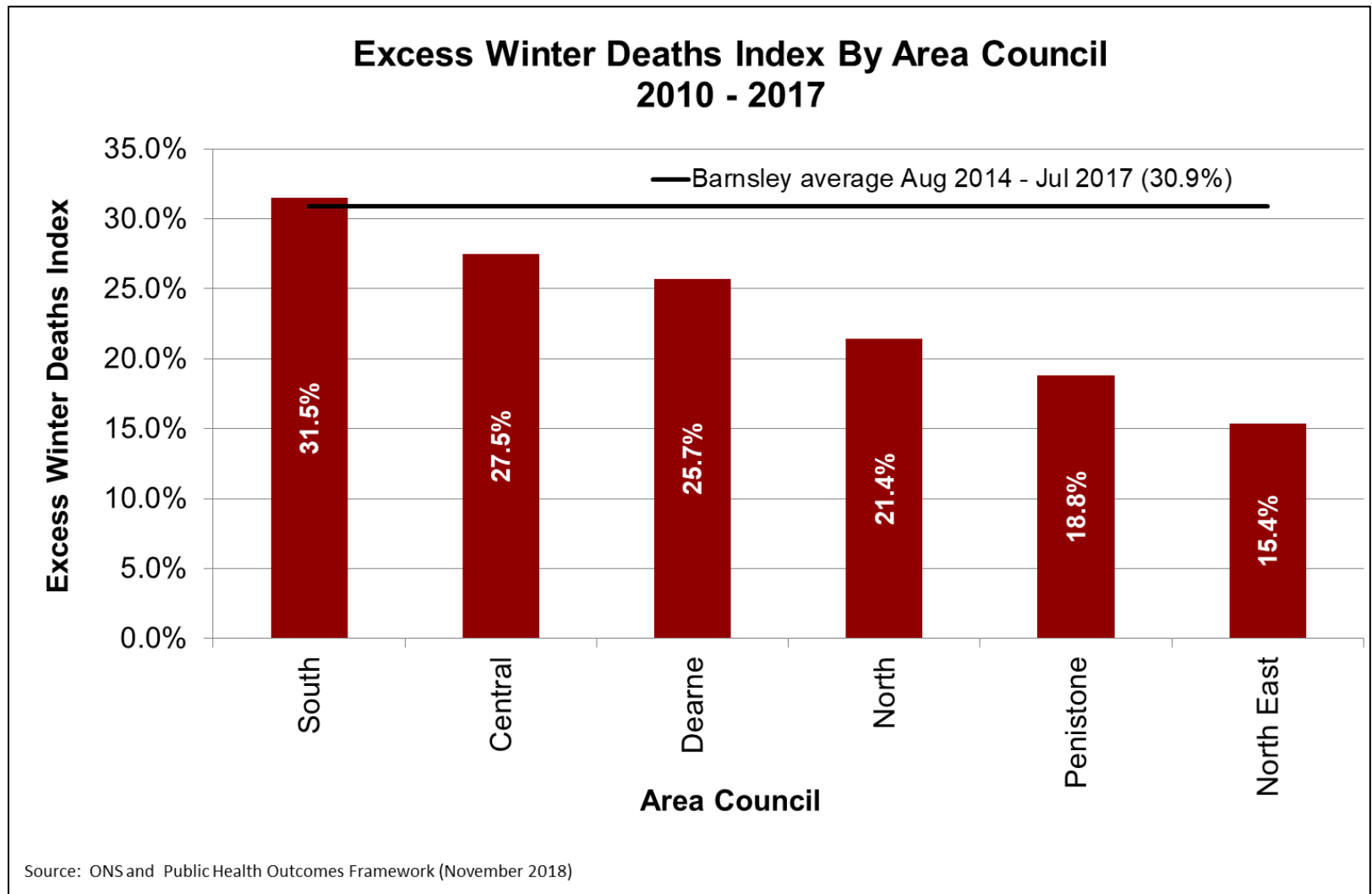


Source: ONS and Public Health Outcomes Framework (November 2018)

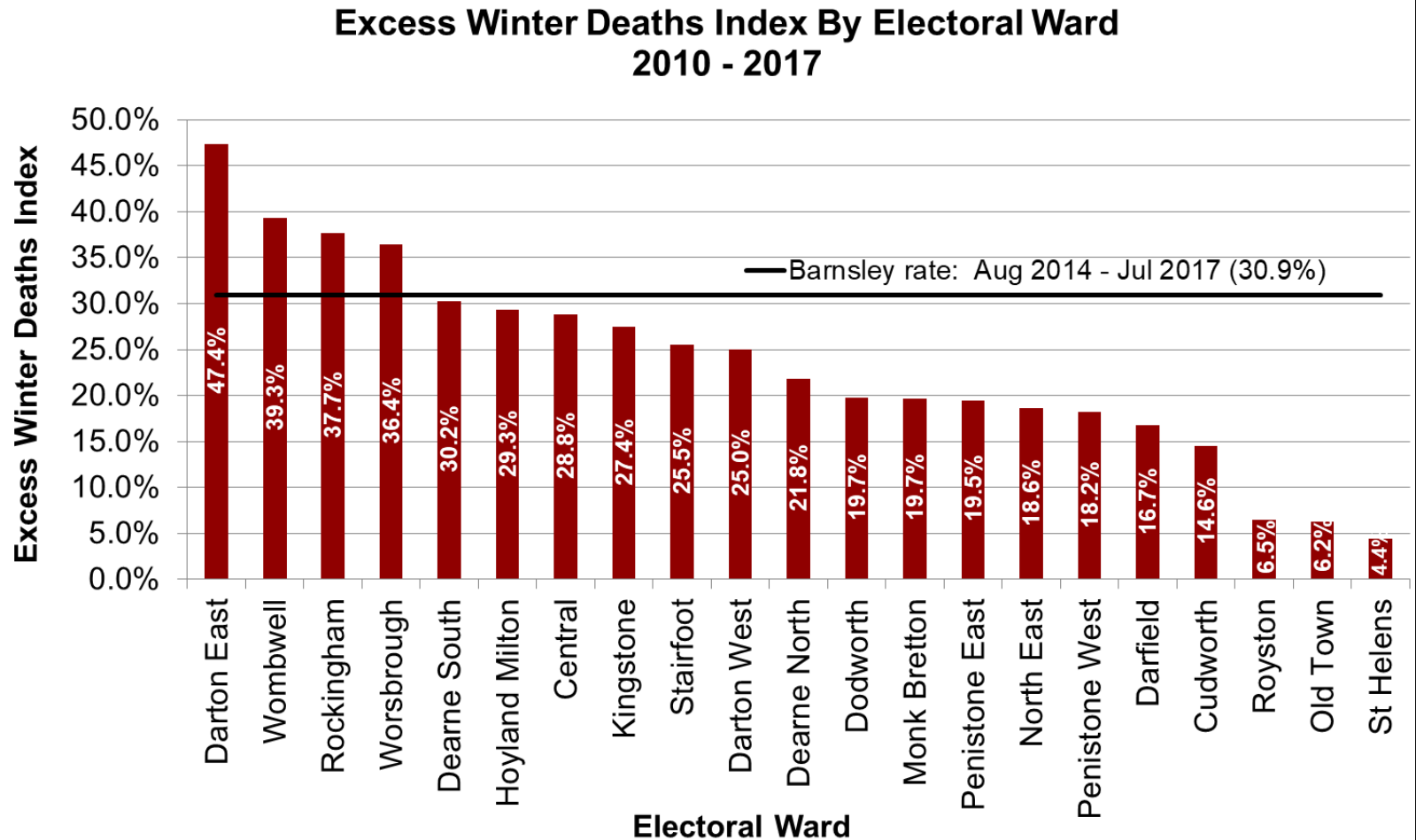


BARNSLEY
Metropolitan Borough Council

Excess Winter Deaths by Area Council



Excess Winter Deaths by Electoral Ward



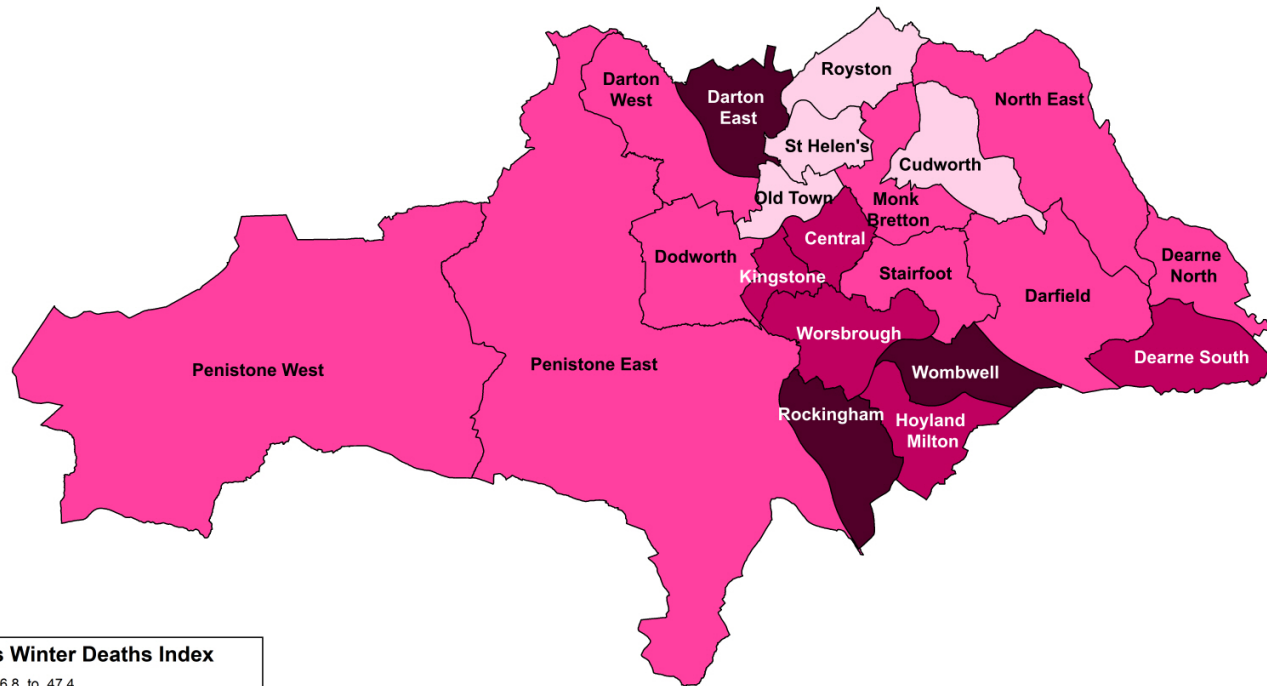
Source: ONS and Public Health Outcomes Framework (November 2018)



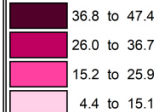
BARNLSLEY
Metropolitan Borough Council

Excess Winter Deaths by Electoral Ward

EWD: Excess Winter Deaths by Barnsley Electoral Ward (2010- 2017)



Excess Winter Deaths Index



Barnsley average (2014-2017) 30.9

Source: Copyright ID (2018), re-used with the permission of The Health & Social Care Information Centre. All rights reserved.

Notes: Excess Winter Deaths Index (EWD Index) is the excess winter deaths measured as the ratio of extra deaths from all causes that occur in the winter months compared with the expected number of deaths, based on the average of the number of non-winter deaths.

© Crown copyright and database rights (2018) Ordnance Survey
licence number 100022264
Contains National Statistics Data

Business Improvement & Intelligence
Barnsley Metropolitan Borough Council



BARNSLEY
Metropolitan Borough Council

Trend in Excess Winter Deaths by Electoral Ward

Ward	2006-2013	2007-2014	2008-2015	2009-2016	2010-2017	Trend
Central	27.1	29.4	34.0	34.9	28.8	
Cudworth	5.5	5.8	13.9	17.5	14.6	
Darfield	23.0	14.4	15.6	16.7	16.7	
Darton East	27.1	28.1	34.2	37.3	47.4	↑
Darton West	17.0	21.1	23.9	28.4	25.0	
Dearne North	26.3	31.8	31.5	26.3	21.8	
Dearne South	28.3	31.7	36.0	30.7	30.2	
Dodworth	12.9	14.7	22.9	19.9	19.7	
Hoyland Milton	15.4	17.7	32.5	36.1	29.3	
Kingstone	5.5	11.8	21.4	20.2	27.4	
Monk Bretton	24.1	31.6	35.3	34.3	19.7	
North East	20.7	20.2	18.6	15.8	18.6	
Old Town	18.4	20.1	19.0	18.0	6.2	
Penistone East	7.7	2.8	11.3	19.9	19.5	
Penistone West	5.4	4.8	17.1	14.3	18.2	
Rockingham	11.1	11.8	22.1	36.2	37.7	↑
Royston	8.1	0.7	5.3	13.5	6.5	
St Helens	14.8	5.9	10.9	12.0	4.4	
Stairfoot	15.7	12.8	24.2	28.6	25.5	
Wombwell	18.1	19.0	28.2	33.7	39.3	↑
Worsbrough	20.5	23.2	38.7	44.6	36.4	
BARNSELY	18.6 (Aug 2010 - Jul 2013)	18.8 (Aug 2011 - Jul 2014)	22.8 (Aug 2012 - Jul 2015)	24.3 (Aug 2013 - Jul 2016)	30.9 (Aug 2014 - Jul 2017)	↑
ENGLAND	17.4 (Aug 2010 - Jul 2013)	15.6 (Aug 2011 - Jul 2014)	19.6 (Aug 2012 - Jul 2015)	17.9 (Aug 2013 - Jul 2016)	21.1 (Aug 2014 - Jul 2017)	

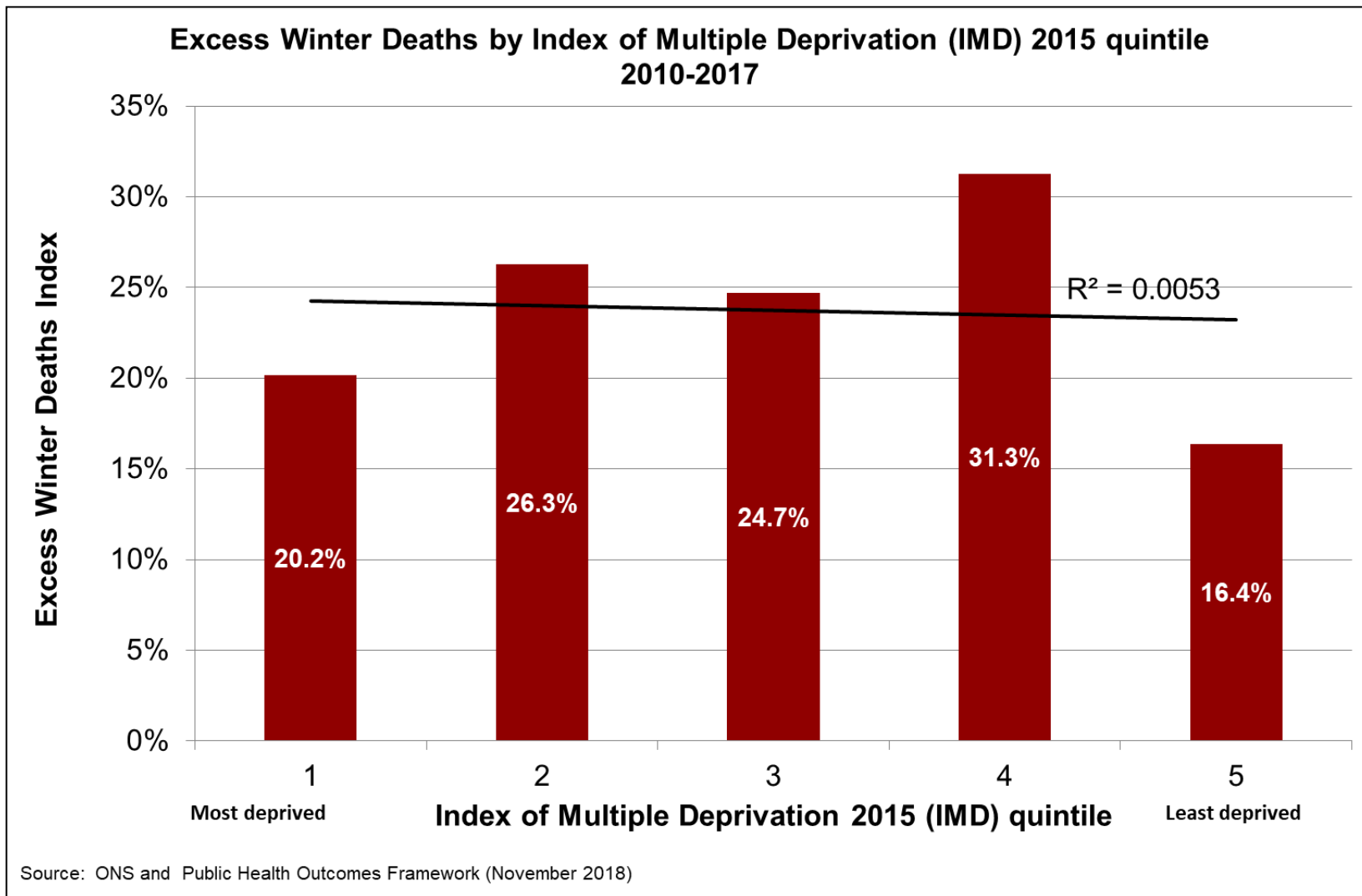
Key
Top 25%
Bottom 25%

↑	Consistent upward trend
	Fluctuating rates over time period
	Barnsley rate is not significantly different to England rate
	Barnsley rate is significantly worse than England rate



BARNSELY
Metropolitan Borough Council

Excess Winter Deaths by Deprivation Quintile



Relationship between Excess Winter Deaths and Fuel Poverty

