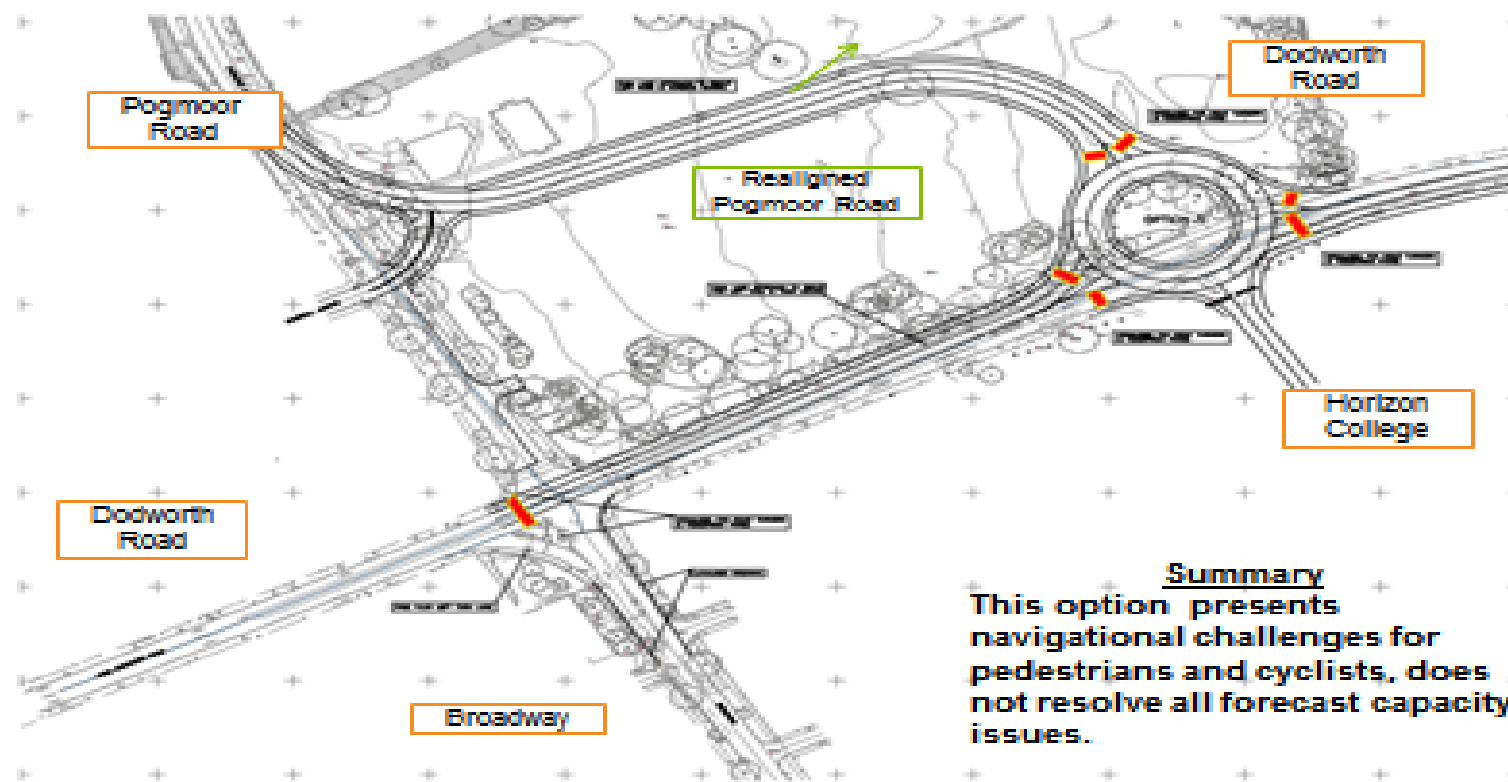


Option C

Description Pogmoor diverted from the crossroads to join Dodworth Road at a new junction on Dodworth Road at the location of the Horizon access.

Option C
The construction of a roundabout linking into the access to Horizon Community College, and a diverted Pogmoor Road (8 variants were tested).



Summary
 This option presents navigational challenges for pedestrians and cyclists, does not resolve all forecast capacity issues.

DM

A total of 11 sub options were tested, with Variants 3, 6 and 11 being taken forward following a high level review.

Sub Options Assessed following a high level review of all sub options	Final Recommendations	Reason
<p>VARIANT 3: Dodworth Road / Broadway – signalised T junction as existing Dodworth Road / Diverted Pogmoor / Horizon – signalised roundabout</p> <p>Taken forward to the final junction assessments along with: Option C Variant 6 Option C Variant 11, and Option G</p>	<p>Rejected</p>	<p>Rejected as when compared to the gyratory through Penny Pie Park (Option G) it did not offer comparable levels of capacity benefits.</p>
<p>VARIANT 6: Dodworth Road / Broadway – signalised T junction as existing Dodworth Road / Diverted Pogmoor / Horizon – signalised crossroads</p> <p>Taken forward to the final junction assessments along with: Option C Variant 3; Option C Variant 11, and Option G</p>	<p>Rejected</p>	<p>Rejected as when compared to the gyratory through Penny Pie Park (Option G) it did not offer comparable levels of capacity benefits.</p>
<p>VARIANT 7 Dodworth Road / Broadway – signalised T junction as existing Dodworth Road / Diverted Pogmoor / Horizon – signalised crossroads, but with a free flow left turn flare into Pogmoor</p>	<p>Rejected</p>	<p>Rejected as the addition of the left turn flare into Pogmoor did not offer any additional benefit when compared to Variant 6 above.</p>

<p>VARIANT 9 Dodworth Road / Broadway – signalised T junction as existing Dodworth Road / Diverted Pogmoor / Horizon – signalised roundabout, but with grade separated pedestrian bridges to remove Pedestrian facilities from the roundabout.</p>	<p>Rejected</p>	<p>Rejected as the removal of the pedestrian facilities from the roundabout onto a grade separated solution did not offer any additional benefit when compared to the cost and impact of constructing bridges at the junction.</p>
<p>VARIANT 10 Dodworth Road / Broadway – signalised T junction as existing Dodworth Road / Diverted Pogmoor / Horizon -signalised roundabout, but roundabout elongated with a cut through the middle to take the Pogmoor Road to Dodworth Road westbound away from the circulatory carriageway.</p>	<p>Rejected</p>	<p>Rejected as the impact of having a link through the roundabout complicated the layout of the southwest node of the junction where it re-joined Dodworth Road, and did not offer any capacity benefits over the simpler variant 11 layout below.</p>
<p>VARIANT 11 Dodworth Road / Broadway – signalised T junction as existing Dodworth Road / Diverted Pogmoor / Horizon -signalised elongated roundabout.</p>	<p>Rejected</p>	<p>Taken forward to the final junction assessments along with: Option C Variant 3; Option C Variant 6, and Option G Rejected as when compared to the gyratory through Penny Pie Park (Option G) it did not offer comparable levels of capacity benefits.</p>