

Your guide

to the budget
and council tax
2021-2022



[BarnsleyCouncil](https://www.barnsley.gov.uk)



[@BarnsleyCouncil](https://twitter.com/BarnsleyCouncil)

**Working together
for a brighter future,
a better Barnsley.**



[Barnsley.gov.uk/Budget](https://www.barnsley.gov.uk/Budget)



[Barnsley.gov.uk/Council-Tax](https://www.barnsley.gov.uk/Council-Tax)



BARNSLEY
Metropolitan Borough Council



This guide looks at...

- where the funding for the budget comes from
- how the budget works
- your council tax and how it's calculated
- how we'll spend and invest for the future.

Every year, we set a budget for the financial year ahead. This sets out how we'll spend our money to provide you with the services you need – such as schools, social care, bin collections and road maintenance.

When we set the budget this time last year, we did so with optimism, as for the first time, after years of austerity, we found ourselves in a position to make investments in key priorities.

At that time, no one could have predicted the devastating impact the Coronavirus (COVID-19) would have on the world, the United Kingdom, South Yorkshire and here in our borough of Barnsley.

Coronavirus (COVID-19) has affected everyone and none more so the way we deliver vital services to you on a day-to-day basis. During the last 12 months, we've provided:

- millions of pounds in financial support to businesses
- free school meals and food parcels to those in need
- supported the most vulnerable in our borough by providing Barnsley's care providers with extra financial support
- help to our communities through these difficult times.

This support has come at the cost of up to £40 million. This is explained further in this guide.

The impact of Coronavirus (COVID-19) will be felt for years to come, but as we enter 2021-2022, we are hopeful with your help we can help the borough recover from the pandemic and work towards a better Barnsley.





The revenue budget

The **revenue budget** is spent on our day-to-day running costs. This includes paying our staff to deliver a range of vital services you and your family need each day; the cost to fuel and maintain our bin lorries to collect and dispose of your waste; the payment we make to care providers to help look after our elderly residents and the cost of opening and running our public buildings.

Council tax contributes towards funding the revenue budget.



In household terms, this is equivalent to you paying your household bills, fuelling your car, food shopping or insuring your home.

The capital budget

In addition to the revenue budget, we also have a separate **capital budget** which is used to pay for one-off investments and projects.

Capital funds are used to purchase or pay for the improvement of our assets that we need to deliver our services. Capital spend is usually large in value, provides long term benefit and ongoing sustainability - for example, the purchase of land, equipment, buildings, and significant road improvements.

Capital resources are not used to fund day-to-day running costs. Capital resources come from a number of places, including selling off our assets, borrowing, and specific grants and contributions.

£400 million of potential new capital investment has been identified over the next three to five years.



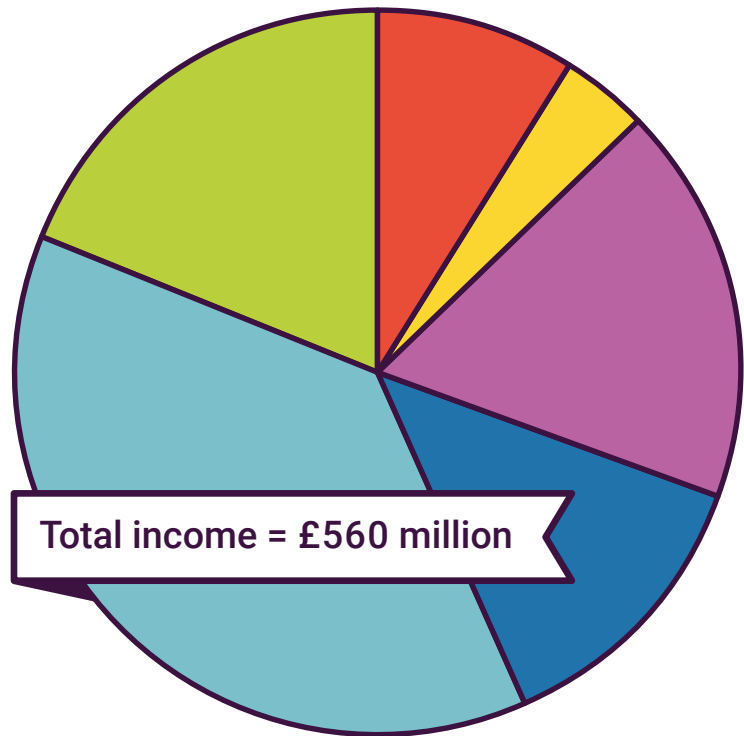
In household terms, this is equivalent to you purchasing a new car, buying a house or furniture for your home. Capital items are often too expensive to pay for in one go.



Where does the revenue budget come from?

In 2021-2022, we'll spend approximately **£560 million** providing you with a range of services. Our main source of funding comes from government funding and grants. As you'll see, council tax contributes 19% towards the total amount of money we need.

The revenue budget comes from a combination of sources:



Total income = £560 million

9% £50M, Government grants

4% £22M, Business rates

18% £99M, Fees and charges

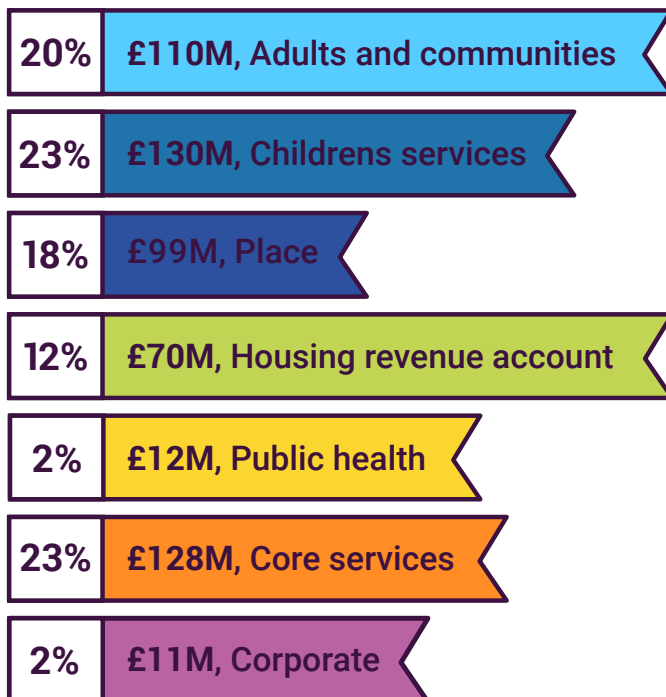
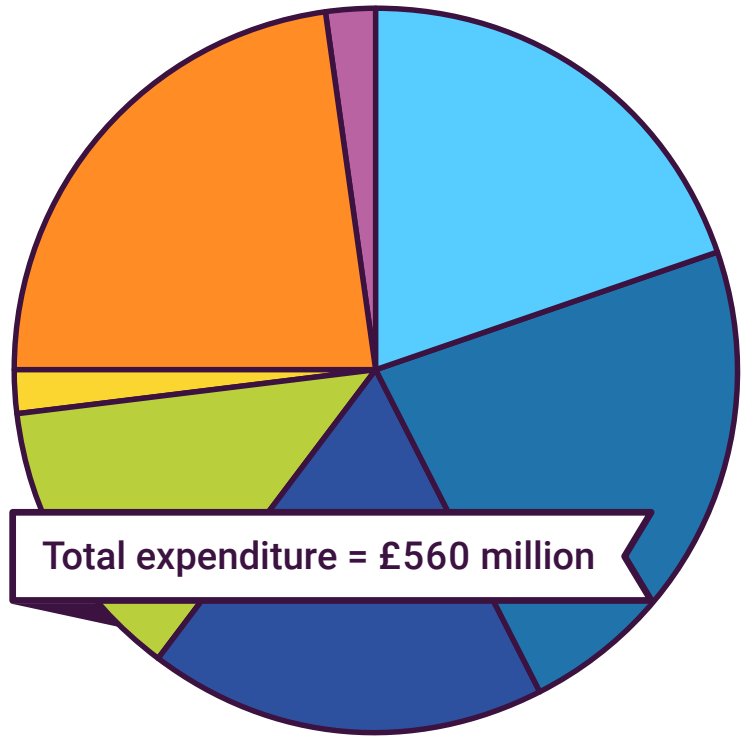
13% £73M, Rents

37% £209M, Specific grants and contributions

19% £107M, Council Tax

How is the money spent?

We prioritise spending in line with our priority areas: a thriving and vibrant economy, people achieving their potential, and strong, resilient communities. Our services are structured to help us achieve this and deliver the outcomes we're committed to in our Council Plan. We're also supported by a lean core which is critical in our drive to be a more business-like and efficient organisation.



Included within the above totals are the following levy payments:

- passenger transport levy in Place £9.494M
- flood defence in Place £108M
- South Yorkshire Pensions Levy in Other £0.108M
- includes £44M of housing benefit payments in Core.



This is how much we've estimated to have spent on COVID-19 costs to keep you and your family safe.

COVID-19 spend up to £39 million

Figures in millions £M



£1M
Homelessness



£4M
Vulnerable people



£3M
Waste collection,
disposal and recycling



£1M
Community support
and health and safety



£1M
Home to School
Transport



£2M
Property
services



£1M
Traffic
management



£3M
Supporting business
and suppliers



£1M
IT and
contact centres



£2M
Recovery



£5M
Outbreak control
and PPE



£14M
Adult social care



£1M
Children's services



Council Plan 2021-2024

Our Council Plan for 2021-2024 sets out what we will achieve against a range of priority areas and where we know we must commit resource, people and time to ensure success against these areas. Each priority area, which was established through the Barnsley 2030 consultation, has a number of outcomes where we focus our resources, such as keeping people safe, protecting our communities, supporting new and existing businesses within Barnsley and making sure our children have the best start in life.

Each outcome we set out is strictly monitored by the most senior teams across the council and scrutinised by Cabinet members every quarter. We then share the results with you, the public, to demonstrate our commitment to these key areas. This makes us accountable to you, the public we serve.

Creating more and better homes

As Barnsley's population continues to grow, so does the need for more and better houses. We'll make sure that housing needs and aspirations are met by providing access to homes that are well maintained, warm and affordable in a peaceful and secure environment.



Early help and intervention

We'll continue to prioritise early help and intervention, providing assistance as soon as it's needed. Our Warm Homes team helps tackle fuel poverty and cold homes, keeping people warm and well. We're implementing our Special Educational Needs and Disability (SEND) Strategy to enable our young people to achieve their potential and share their views with us. Our Early Help services provide a range of support for families if they have additional needs that aren't being met by universal services.





Barnsley 2030

Our residents, businesses, employees, councillors, and partner organisations offered their views about the future of Barnsley. This feedback has been used to shape our shared Barnsley 2030 vision and ambitions. Our residents and organisations across the private, public, voluntary and community sectors have an important role in working together to achieve this vision of Barnsley's future and our long-term ambitions. By 2030, we want everyone to benefit from, and contribute to, making our borough a thriving place of possibilities.



Commercial strategy

We'll focus on our commercial strategy, which will continue to embed a more business-like culture across the organisation. This will improve the efficiency of our services, increase income streams and instill a more commercial mindset across the organisation. We'll also focus on our assets - making sure we're managing and making the best use of them to support our services.





Ongoing investment for a sustainable future

We'll continue to deliver our capital investment programme over the next two years as we continue our drive to invest in the ongoing redevelopment and sustainability of Barnsley's future. Our Capital Programme is committed to the £400 million of potential new capital investment has been identified over the next three to five years. This includes:



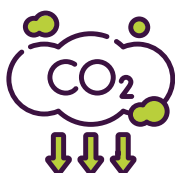
£1 MILLION

Investing in a new residential children's home



£1 MILLION

Flood defences at Lang Avenue



£6 MILLION

Investment in energy efficiency and carbon reduction as we move towards Zero 40



£65 MILLION

Ambitious plans to regenerate our Principal Towns including a major redevelopment planned for Goldthorpe



£40 MILLION

Future High Streets and Transforming Cities programmes and Wider Town Centre improvements



Annual increase 2.90%

Despite our efforts to bridge the gaps in funding, council tax will increase by 2.9%* from April 2021 due to year on year cuts from central government, combined with inflation and the growing demand on our services. This includes:

- 1.4% to help fund general services
- 1.5% to support Adult Social Care

We know money is tight and we have not taken this decision lightly. We've explored a number of options and done everything we can to minimise the impact of this increase on you and your family.

*This does not include the amount you pay towards police and fire authorities.

What will this increase mean to you?

The financial impact of this increase will depend on the house band in which you live. The table below provides the weekly and annual increase based on your house band. This does not include the amount you pay towards South Yorkshire Police Authority and South Yorkshire Fire and Rescue Authority.

% Increase	0.00%	General increase 1.4%		Adult Social Care increase 1.5%		Overall increase 2.9%		Total cost 2021-22	
		Annual Increase	Weekly Increase	Annual Increase	Weekly Increase	Annual Increase	Weekly Increase	Total Annual Cost	Weekly Cost
Band A-	£856.29	£12.00	£0.16	£12.84	£0.31	£24.83	£0.48	£881.13	£16.94
Band A	£1,027.55	£14.40	£0.20	£15.41	£0.38	£29.80	£0.57	£1,057.36	£20.33
Band B	£1,198.81	£16.80	£0.23	£17.99	£0.44	£34.79	£0.67	£1,233.59	£23.72
Band C	£1,370.07	£19.19	£0.26	£20.55	£0.50	£39.74	£0.76	£1,409.81	£27.11
Band D	£1,541.34	£21.58	£0.30	£23.12	£0.56	£44.70	£0.86	£1,586.04	£30.50
Band E	£1,883.84	£26.38	£0.36	£28.27	£0.69	£54.65	£1.05	£1,938.49	£37.28
Band F	£2,226.37	£31.18	£0.43	£33.40	£0.81	£64.58	£1.24	£2,290.95	£44.06
Band G	£2,568.88	£35.97	£0.49	£38.54	£0.94	£74.52	£1.43	£2,643.40	£50.83
Band H	£3,082.66	£43.17	£0.59	£46.25	£1.13	£89.42	£1.72	£3,172.08	£61.00



Major precepting authorities

We also bill and collect council tax on behalf of the South Yorkshire Police Authority and South Yorkshire Fire and Rescue Authority. The table below shows the precept that will be charged by each authority in 2021-22, in addition to the amount paid directly to us.

Precepting authority	Annual contribution									
	House valuation bands	A-	A	B	C	D	E	F	G	H
South Yorkshire Fire Authority		£42.26	£50.71	£59.17	£67.62	£76.07	£92.97	£109.88	£126.78	£152.14
South Yorkshire Police Authority		£118.36	£142.03	£165.70	£189.37	£213.04	£260.38	£307.72	£355.07	£426.08

Additional information on budget papers can be viewed here:

[SouthYorks.gov.uk](https://www.southyorks.gov.uk)

[SouthYorkshire-pcc.gov.uk](https://www.southyorkshire-pcc.gov.uk)

If you live in an area that has a Parish Council, you may also have to pay an additional amount set by the Parish Council which we also collect on behalf of the individual parish precepts. This amount can be found on our website: [Barnsley.gov.uk/Council-Tax](https://www.barnsley.gov.uk/Council-Tax)

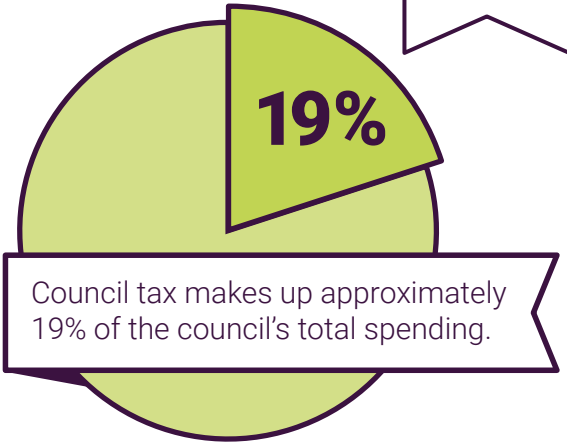


This week, you were served by Barnsley Council



It's important to remember that council tax is only a contribution towards the day-to-day running costs of delivering our services – it's not a charge for individual services.

Council tax only contributes towards around 19% of the total amount we'll spend delivering our services and does not contribute towards any capital investment schemes we deliver.



Here's a snap shot of what your council tax contributes towards in one week

 **708 tonnes**

of waste was recycled

1.97 million square metres of grass was cut

We've gritted and cleaned roads within the borough's **729 mile** network



159,171 bins were emptied

104 incidents of fly tipping were removed



 **90 incidents**

of anti-social behaviour were dealt with

91 children were found loving foster homes for the year

2,367 older people were cared for including those receiving home support



It costs around **£10.7M** a week to provide the services you need. Council tax only contributes £2M towards these costs!





How do you work out how much council tax you need to charge?

To work out much council tax our residents need to pay, we work out how much money we need to deliver our services and then take away the money we receive from the government and other sources (see page 3). This leaves us with the funding gap or short fall we need to fund through council tax contributions.

Why has my council tax increased?

Despite our efforts to make financial savings, we're faced with ongoing cuts from the government and a growing demand on our services which increases the gap in funding we need to fill. If we didn't increase council tax to fill this gap, we'd have to cut vital services as the funding is simply not there.

Why is my council tax bill more than my friends?

The amount of council tax you pay depends on the property band you live in. All properties are banded into one of eight valuation bands (A to H) set by the government. If you live in an area with a Parish Council, you may also have to pay an additional precept set by them which is added to your bill.

Why do I have to pay for services I don't use?

Council tax is like income tax – it's not a charge for individual services, it contributes towards the overall running costs of delivering our services. It contributes towards lots of services you use daily that benefit everyone - such as, your bin collections, road maintenance and public health. Some services are used by fewer residents depending on personal circumstances but remember, we never know what services we may need in the future.

How do I pay my council tax?

You'll receive your bill in March which outlines payment options. You can pay the annual bill in one go or in monthly instalments. The easiest way to pay is to set up a direct debit – you can choose whether to pay over ten or 12 months and you can even choose out of four dates when the payment leaves your account each month. Even better, register for a My Bentax account so you can access information about your bill, change payment details and even register for paperless e-billing. To do this, visit: Barnsley.gov.uk/MyBentax





What do I do if I can't pay my council tax?

If you're struggling to pay your bill, please let us know as soon as possible so we can make reasonable alternative payment arrangements.

What will happen if I miss a payment?

If you don't pay your council tax bill on time, we'll send you a reminder telling you how much is overdue which you'll be required to pay within seven days. If you fail to do so, you could lose the right to pay in instalments.

If payment is still not made as required, recovery proceedings may be taken against you. For more information, visit: Barnsley.gov.uk/CTrecovery

Could I be eligible for a discount or exemption?

Depending on your personal circumstances, you may be eligible for a discount on your council tax, for example, if you're the only person over 18 living in your home, you're a full-time student, or your property is unoccupied whilst undergoing major repairs. In some cases, you may be exempt from paying council tax at all. For more information about discounts and exemptions or to make an application, visit: Barnsley.gov.uk/Council-Tax

How can I find out more information?

Information about all aspects of council tax - including how to pay, telling us about changes to your circumstances, discounts and exemptions, and managing your account online can be found all in one place on our website: Barnsley.gov.uk/Council-Tax.

To make things even more convenient, we've introduced a live webchat service to the council tax section of the website so someone will be on hand to deal with any queries you may have at the click of a button - freeing up phone lines and saving you time.

