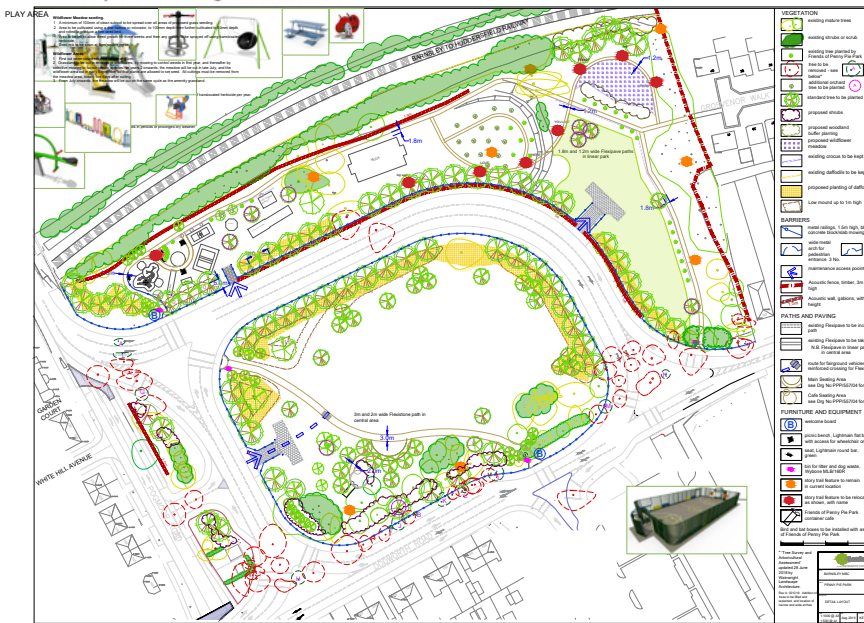


A628 Dodworth Road / Broadway Improvement Scheme



We are pleased to announce that Casey have been awarded the contract to deliver the A628 Dodworth Road / Broadway Improvement scheme on behalf of Barnsley Council.



Works commenced on 8th March 2021 and they are anticipated to take approximately 39 weeks, with completion due in November 2021.

We wish to assure you that we will be working hard to ensure any impact on you and the local environment is kept to a minimum. However from time to time there will inevitably be deliveries and movements of large plant and machinery and we will do our best to keep the impact of these as low as possible.

The first operations we will be carrying out are excavations to the new carriageway and drainage works.

We will provide regular newsletters to keep you updated.

During the construction period we will do our utmost to minimise any disruption to the surrounding areas. If you have any concerns please feel free to contact our team using the details below, a member of our team will be happy to assist you with any questions you may have.

For further information and Frequently Asked Questions please use Barnsley Council's Major Projects Team webpage link:
www.barnsley.gov.uk/services/regeneration/key-projects/m1-junction-37

For specific enquiries please use Barnsley Council's dedicated project email address - PennyPiePark@barnsley.gov.uk

IMPORTANT SAFETY INFORMATION

Covid-19: We have put in place strict protocols and social distancing measures on site to minimise the risk of transmission as far as possible.

To maintain your safety and ours we ask that, if you need to contact anyone on site, you use the contact numbers provided here rather than visit.

Heavy Plant: This project will involve the use of heavy plant and equipment, materials deliveries using HGVs. In order to ensure the safety of all residents we ask that you keep to the pedestrian walkways that will be clearly marked.

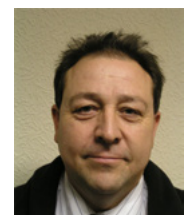
The scheme will be registered with the Considerate Constructors scheme. Details are overleaf.

Our Site Manager, Paul Turner, will be based on site for the duration of this project.

Head Office
01706 341121

Emergency,
out of hours, number
0800 032 8707

Customer Care Manager
07764 600925



Paul Turner
Site Manager



Considerate Constructors Scheme

Code of Considerate Practice

Considerate constructors seek to improve the image of the construction industry by striving to promote and achieve best practice under this Code. They will:

Care about **Appearance**

Constructors should ensure sites appear professional and well managed

- Ensuring that the external appearance of sites enhances the image of the industry.
- Being organised, clean and tidy.
- Enhancing the appearance of facilities, stored materials, vehicles and plant.
- Raising the image of the workforce by their appearance.

Respect the **Community**

Constructors should give utmost consideration to their impact on neighbours and the public

- Informing, respecting and showing courtesy to those affected by the work.
- Minimising the impact of deliveries, parking and work on the public highway.
- Contributing to and supporting the local community and economy.
- Working to create a positive and enduring impression, and promoting the Code.

Protect the **Environment**

Constructors should protect and enhance the environment

- Identifying, managing and promoting environmental issues.
- Seeking sustainable solutions, and minimising waste, the carbon footprint and resources.
- Minimising the impact of vibration, and air, light and noise pollution.
- Protecting the ecology, the landscape, wildlife, vegetation and water courses.

Secure everyone's **Safety**

Constructors should attain the highest levels of safety performance

- Having systems that care for the safety of the public, visitors and the workforce.
- Minimising security risks to neighbours.
- Having initiatives for continuous safety improvement.
- Embedding attitudes and behaviours that enhance safety performance.

Value their **Workforce**

Constructors should provide a supportive and caring working environment

- Providing a workplace where everyone is respected, treated fairly, encouraged and supported.
- Identifying personal development needs and promoting training.
- Caring for the health and wellbeing of the workforce.
- Providing and maintaining high standards of welfare.

The Code of Considerate Practice outlines the Scheme's expectations of all registered sites, companies and suppliers, describing those areas that are considered fundamental by the Scheme in helping improve the image of construction.

For more information, call **0800 783 1423** or visit www.ccscheme.org.uk

Improving the image of construction