

# Your guide

to the budget  
and council tax  
2022-2023



[BarnsleyCouncil](https://www.barnsley.gov.uk)



[@BarnsleyCouncil](https://twitter.com/BarnsleyCouncil)

**Barnsley...**  
**the place of**  
**possibilities**



[Barnsley.gov.uk/Budget](https://www.barnsley.gov.uk/Budget)



[Barnsley.gov.uk/Council-Tax](https://www.barnsley.gov.uk/Council-Tax)



**Barnsley**  
**20**  
**30**

## This guide looks at...

- **where the funding for the budget comes from**
- **how the budget works**
- **how we'll spend and invest for the future**
- **your council tax and how it's calculated**
- **answers to your frequently asked questions.**



Every year, we set our budget for the financial year ahead. This breaks down how we'll spend the money we have to provide you and your family with the services you need – such as schools, social care, bin collections and road maintenance. It also sets out how we will invest capital resources to make long-term investments across the borough.

Despite another year of uncertainty and considerable challenges, we're proud to present a balanced budget for 2022-23 and find ourselves in a reasonably strong financial position for the year ahead. We have achieved this by being vigilant, preparing for every scenario and managing our resources with the long-term future in mind.

This enables us to continue our drive to invest in the borough for the future - boosting investment for people and their places; in our Principal Towns and Local Centres, creating opportunities for new jobs and better homes, while supporting the people who need our help the most.

Despite this, we remain vigilant and well prepared for future challenges. The pandemic came at a huge financial cost to us, and the impact will be felt for many years to come. But as we enter 2022-23, we're confident that things are looking brighter for Barnsley.

Our vision is to make Barnsley the place of possibilities, a place that fosters and grows ambition across our communities. Our 2022-23 budget and plans to invest put us in a strong position to build back stronger and bring this vision to life.

## Understanding the budget

We manage two separate budgets that are funded and spent in very different ways.

### The Revenue Budget

The **revenue budget** is spent on our day-to-day running costs. This includes paying our staff to deliver a range of vital services you and your family need; the cost to fuel and maintain our bin lorries to collect and dispose of your waste; the payment we make to care providers to help look after our elderly residents and the cost of opening and running our public buildings.



Revenue comes from several places including government funding and grants. **Council tax also contributes towards funding the revenue budget.**



In household terms, this is equivalent to you paying your household bills, fuelling your car, food shopping or insuring your home.

### The Capital Budget

In addition to the revenue budget, we also have a separate **capital budget** which is used to pay for one-off investments and projects. Capital funds are used to purchase or pay for the improvement of our assets that we need to deliver our services.



Capital spend is usually large in value, provides benefits and ongoing sustainability - for example, the purchase of land, equipment, buildings, and significant road improvements.

Capital funding comes from several places, including selling off our assets, borrowing, and specific grants and contributions. **Please note that council tax is NOT used to directly fund capital investments.**

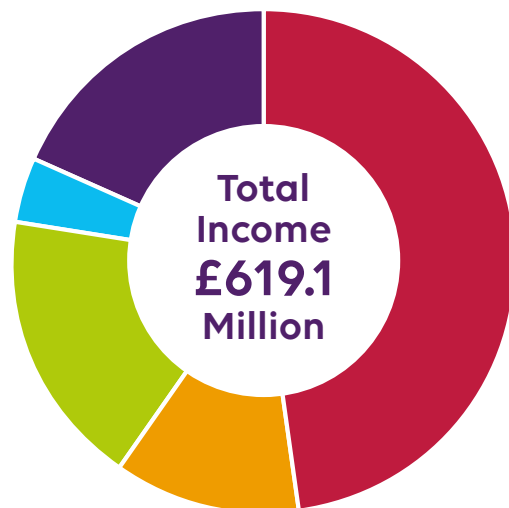
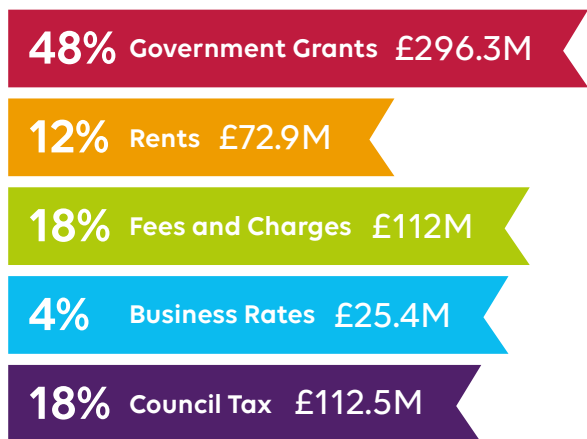


In household terms, this is equivalent to you purchasing a new car, buying a house or furniture for your home. Capital items are often too expensive to pay for in one go.

## Where does our revenue budget come from?

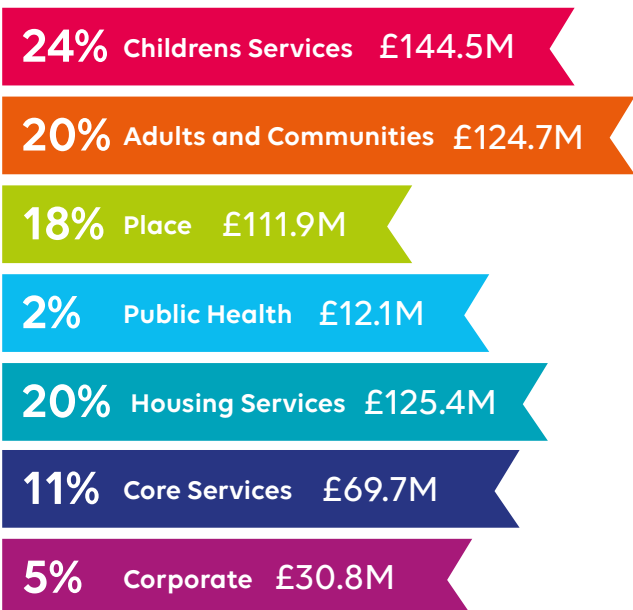
The revenue budget comes from a number of different sources. As you can see, the main source of funding comes from central government grants. This is why it impacts so much on our budget when the government make year-on-year cuts.

Council tax will only contribute 18% towards the total amount we need in 2022-23 to deliver the services you and your family need - now and in the future.



## How is the revenue budget spent?

In 2022-23, we will spend approximately **£619.1 million** providing you and your family with a range of services. This includes an additional **£27 million** we are investing in our day-to-day services. The budget is split between our key service areas which are vital to you and your family and invested in those areas where it is most needed or will have the biggest impact. You can find out more about how we will be investing on page 6.



Here is a more detailed breakdown of how the revenue budget is allocated between service areas.


 **Children's Social Care**  
**£34M**

 **Education**  
Including Schools  
**£110M**

 **Regeneration**  
**£9M**

 **Buildings**  
including Glassworks and Schools  
**£64M**

 **Cultural services**  
**£4M**

 **Transport**  
including public transport  
**£19M**

 **Waste Collection and Disposal**  
**£25M**

 **Highways**  
**£24M**

 **Neighbours and Communities**  
**£28M**

 **Home to School**  
**£6M**

 **Bereavement Services**  
**£2M**

 **Adult Social Care**  
**£102M**

 **Health Protection**  
**£8M**

 **Regulatory Services**  
**£2M**

 **Housing Services**  
including housing Benefits  
**£125M**

 **Planning Services**  
**£2M**

 **Schools Catering**  
**£3M**

 **Support Services**  
**£26M**

 **Corporate Costs**  
capital costs  
**£30M**

**Total spend £619 million**

## Investing in our services and Barnsley's future

Despite increasing demand and pressures on our services and finances, we continue to work towards our [Council Plan](#) for 2021-2024 which sets out what we will achieve against a range of priority areas and where we know we must commit resource, people and time to ensure success.

**Barnsley – the place of possibilities**

<b>Healthy Barnsley</b>	<b>Learning Barnsley</b>	<b>Growing Barnsley</b>	<b>Sustainable Barnsley</b>
-------------------------	--------------------------	-------------------------	-----------------------------

**Enabling Barnsley** We are a modern inclusive efficient, productive and high-performing council.

Each priority has a number of outcomes where we focus our resources, such as keeping people safe, protecting our communities, supporting new and existing businesses within Barnsley and making sure our children have the best start in life.

Delivery of our plan is more important than ever as we continue to build our borough back better and fairer.



This year we will be investing a further

**£27 million**

of revenue funding to support those service areas that need it the most or will make the biggest difference.



We will also continue to roll out our capital funding programmes including

**£56.2 million**

of new one-off capital funding over the next three to five years to support new or existing capital investment projects.

## Investing in our services

### Protecting those that need it most - children and adult social care

**Everyone in Barnsley should have the best possible chance of enjoying life in good physical and mental health. It is our priority to ensure that when support is needed, we're able to provide it - whenever and wherever it is needed. Our health and social care services are coming together so you can get the right care and support you need.**



We will be investing in our children's social care by employing additional social workers. This will help improve the time spent engaging with children and families enabling social workers to really understand a child's needs, experiences and the impact of harm, to help make the right decisions for our children at the right time.



We will be investing in adult social care in response to the ever-growing population of elderly people who need our help.



We will also be investing in children with special educational needs and disabilities (SEND) which includes providing support for children and young people to attend a mainstream school here in Barnsley.

### Protecting our borough, local parks and open spaces

**We want Barnsley to be clean, green and protected for our future generations. We want to make Barnsley more attractive and a welcoming place to live, work and visit - today and for the future. We want you to take pride and feel proud to live in Barnsley; for future generations to feel lucky to be brought up here and for people to enjoy visiting our borough and all it has to offer.**



The 2022-23 budget will see us invest in two additional clean up teams to help take care of our borough - keeping it cleaner and more attractive.



The new teams will wash pavements, repair, maintain or replace street furniture and bins across our principal towns, local centres and the town centre.



We will also be investing in additional grass cutting across the borough in parks and open spaces, cultural venues, cemeteries and the crematorium.

## Investing in Barnsley's future

### Investing in our Principal Towns and Local Centres

We will continue to invest in our local high streets and local towns through our Principal Towns investment programme. The programme plans to invest up to **£30 million** over the next five years in our six principal towns and local town centres to help communities and businesses thrive.



Our Principal Towns work is all about making long term improvements visible in our local areas and ensuring everyone has access to local shops, markets and restaurants so that everyone can enjoy leisure time in their communities, helping local economy and creating a network of economically viable high streets throughout Barnsley.

We've already invested **£5 million** and 2022-23 will see an upfront **£10 million** invested to kickstart the programme. The proposed plans cover a range of areas such as business growth, environment, transport links and employment and skills.

It is fantastic that we are in a position to invest in our communities and help our high streets to thrive into places to be proud of.

### Investing in more and better housing across the borough

The government says that we must provide **21,524 new homes** by 2033. This year, we will be investing in housing across the borough providing a wider choice of quality, affordable and sustainable housing.

This includes **£19.1 million** for Barnsley's social housing to make sure that homes are maintained to a decent standard and **£11.4 million** to provide new energy-efficient quality homes, including the Goldthorpe Market Site Housing scheme.





## Investing in roads and highways

We will continue to actively progress further external funding opportunities, including a major investment in transport infrastructure across the borough as part of the South Yorkshire Mayoral Combined Authority sustainable transport programme.

We will also be investing an additional **£2 million** to improve our roads and highways across the borough in addition to the existing **£13 million** highway capital investment programme.



## Investing in our young people to reach their potential

We will be investing a further **£2 million** into the development of Yorkshires first state of the art Youth Zone in Barnsley town centre.

The Youth Zone will provide thousands of young people across Barnsley with a safe and inspiring place to visit with the opportunity to discover their talents, develop their skills and reach their full potential.

It will deliver skills and employability workshops as well as a wide range of programmes, services and activities. Youth workers will be on hand to offer guidance and support to help Barnsley's young people thrive.



## Investing in inspiring young people and nurturing talent

We will be **investing £500,000** towards the creation of a permanent home for world-renowned Barnsley Youth Choir to develop the Northern Academy for vocal excellence.

The whole community will benefit from the centre, providing space for people of all ages and abilities to learn and train. The centre will provide great opportunities for aspiring young people, nurture talent and develop skills for life enabling everyone to be the best they can be.



Despite our efforts to bridge the gaps in funding, year-on-year cuts from central government, inflation, the ongoing impact of Covid-19 and growing demands on our services, council tax will increase by 3.5%\* from April 2022. We know money is tight and we have not taken this decision lightly. We've explored a number of options and done everything we can to minimise the impact of this increase on you and your family.

\*This does not include the amount you pay towards police and fire authorities.



## Annual increase 3.5%

### What will the increase mean to me?

The financial impact of this increase will depend on the house band in which you live. The table below provides the weekly and annual increase based on your house band.

This does not include the amount you pay towards South Yorkshire Police Authority and South Yorkshire Fire and Rescue Authority.

		Adult Social Care Precept		General Increase		Cumulative Increase		2022/23 Total	
% Increase		2%		1.5%		3.5%		3.5%	
Band	Current Annual Cost	Annual Increase	Weekly Increase	Annual Increase	Weekly Increase	Annual Increase	Weekly Increase	Annual Cost	Weekly Cost
A-	£881.13	£17.62	£0.34	£13.22	£0.25	£30.84	£0.59	£911.97	£17.54
A	£1,057.36	£21.15	£0.41	£15.86	£0.31	£37.01	£0.71	£1,094.37	£21.05
B	£1,233.59	£24.67	£0.47	£18.50	£0.36	£43.17	£0.83	£1,276.76	£24.55
C	£1,409.81	£28.20	£0.54	£21.15	£0.41	£49.35	£0.95	£1,459.16	£28.06
D	£1,586.04	£31.72	£0.61	£23.79	£0.46	£55.51	£1.07	£1,641.55	£31.57
E	£1,938.49	£38.77	£0.75	£29.08	£0.56	£67.85	£1.30	£2,006.34	£38.58
F	£2,290.95	£45.82	£0.88	£34.36	£0.66	£80.18	£1.54	£2,371.13	£45.60
G	£2,643.40	£52.87	£1.02	£39.65	£0.76	£92.52	£1.78	£2,735.92	£52.61
H	£3,172.08	£63.44	£1.22	£47.58	£0.92	£111.02	£2.14	£3,283.10	£63.14

## Major Precepting Authorities

We also bill and collect council tax on behalf of the South Yorkshire Police Authority and South Yorkshire Fire and Rescue Authority. The table below shows the precept that will be charged by each authority in 2022-23, in addition to the amount paid directly to us.

Band	Barnsley Council	South Yorkshire Fire	South Yorkshire Police*	Total 2022-23 council tax	Average monthly charge	Average weekly charge
A-	£911.97	£43.10	£123.91	£1,078.98	£89.92	£20.75
A	£1,094.37	£51.72	£148.69	£1,294.78	£107.90	£24.90
B	£1,276.76	£60.34	£173.48	£1,510.58	£125.88	£29.05
C	£1,459.16	£68.96	£198.26	£1,726.38	£143.87	£33.20
D	£1,641.55	£77.58	£223.04	£1,942.17	£161.85	£37.35
E	£2,006.34	£94.82	£272.60	£2,373.76	£197.81	£45.65
F	£2,371.13	£112.06	£322.17	£2,805.36	£233.78	£53.95
G	£2,735.92	£129.30	£371.73	£3,236.95	£269.75	£62.25
H	£3,283.10	£155.16	£446.08	£3,884.34	£323.70	£74.70

Additional information on budget papers can be viewed here:

[SouthYorks.gov.uk](https://www.southyorks.gov.uk) | [SouthYorkshire-pcc.gov.uk](https://www.southyorkshire-pcc.gov.uk)

If you live in an area that has a Parish Council, you may also have to pay an additional amount set by the Parish Council which we also collect on behalf of the individual parish precepts. This amount can be found on our website:

[Barnsley.gov.uk/Council-Tax](https://www.barnsley.gov.uk/Council-Tax)

## Local Council Tax Support

We will continue to provide additional support during 2022-23 to approximately



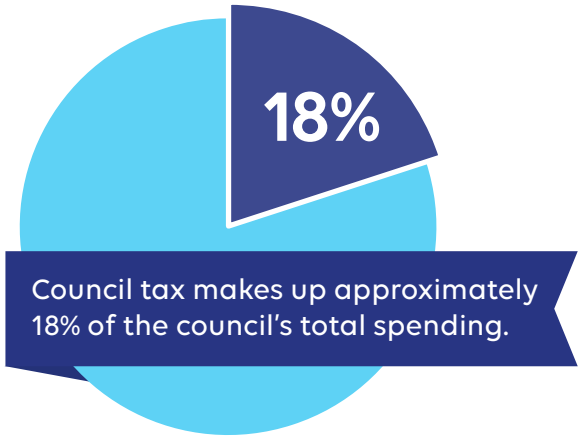
**15,000 households**  
who are eligible for local council tax support

**Each eligible claimant will receive a one-off payment of £125 and will see no increase in their 2022-23 council tax bill.**

# This week, you were served by Barnsley Council

It's important to remember that council tax is only a contribution towards the day-to-day running costs of delivering our services – it's not a charge for individual services.

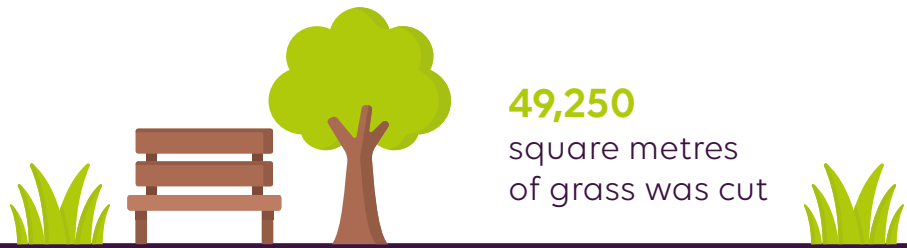
Council tax only contributes towards around 18% of the total amount we'll spend delivering our services and does not contribute towards any capital investment schemes we deliver.



## Here's a snap shot of what your council tax contributes towards in one week

**713 tonnes**

of waste was recycled



We've gritted and cleaned roads within the borough's **729 mile** network



**159,171** bins were emptied



**101 incidents**

of fly tipping were removed

**201 incidents**

of anti-social behaviour were dealt with



**95 children** per year were found loving foster homes

**2,927** people were cared for including those receiving home support



It costs around **£11.9M** a week to provide the services you need. Council tax only contributes £2.1M towards these costs.

## How do you work out how much council tax you need to charge?

To work out much council tax our residents need to pay, we work out how much money we need to deliver our services and then take away the money we receive from the government and other sources (see page 4). This leaves us with the funding gap or short fall we need to fund through council tax contributions.

## Why has my council tax increased?

Despite our efforts to make financial savings, we're faced with ongoing cuts from the government and a growing demand on our services which increases the gap in funding we need to fill. If we didn't increase council tax to fill this gap, we'd have to cut vital services as the funding is simply not there.

## Why is my council tax bill more than my friends?

The amount of council tax you pay depends on the property band you live in. All properties are banded into one of eight valuation bands (A to H) set by the government. If you live in an area with a Parish Council, you may also have to pay an additional precept set by them which is added to your bill.

## Why do I have to pay for services I don't use?

Council tax is like income tax – it's not a charge for individual services, it contributes towards the overall running costs of delivering our services. It contributes towards lots of services you use daily that benefit everyone - such as, your bin collections, road maintenance and public health. Some services are used by fewer residents depending on personal circumstances but remember, we never know what services we may need in the future.

## How do I pay my council tax?

You'll receive your bill in March which outlines payment options. You can pay the annual bill in one go or in monthly instalments. The easiest way to pay is to set up a Direct Debit – you can choose whether to pay over ten or 12 months and you can even choose out of four dates when the payment leaves your account each month. Even better, register for a My Bentax account so you can access information about your bill, change payments details and even register for paperless e-billing. To do this, visit: [Barnsley.gov.uk/MyBentax](https://Barnsley.gov.uk/MyBentax)

## What do I do if I can't pay my council tax?

If you're struggling to pay your bill, please let us know as soon as possible so we can make reasonable alternative payment arrangements.

## What will happen if I miss a payment?

If you don't pay your council tax bill on time, we'll send you a reminder telling you how much is overdue which you'll be required to pay within seven days. If you fail to do so, you could lose the right to pay in instalments. If payment is still not made as required, recovery proceedings may be taken against you. For more information, visit: [Barnsley.gov.uk/CTrecovery](https://www.barnsley.gov.uk/CTrecovery)

## Could I be eligible for a discount or exemption?

Depending on your personal circumstances, you may be eligible for a discount on your council tax, for example, if you're the only person over 18 living in your home, you're a full-time student, or your property is unoccupied whilst undergoing major repairs.

In some cases, you may be eligible for council tax support or exempt from paying council tax at all. For more information about discounts and exemptions or to make an application, visit: [Barnsley.gov.uk/Council-Tax](https://www.barnsley.gov.uk/Council-Tax).

## How can I find out more information?

Information about all aspects of council tax - including how to pay, telling us about changes to your circumstances, discounts and exemptions, and managing your account online can be found all in one place on our website: [Barnsley.gov.uk/Council-Tax](https://www.barnsley.gov.uk/Council-Tax).

To make things even more convenient, we've introduced a live webchat service to the council tax section of the website so someone will be on hand to deal with any queries you may have at the click of a button - freeing up phone lines and saving you time.

You will also find a full list of FAQs about the 2022-23 budget and council tax on the website at [Barnsley.gov.uk/Budget](https://www.barnsley.gov.uk/Budget).