



Barnsley

Supervised Toothbrushing Club Toolkit

2025



Contents

Section	Title	Page
1	Introduction	3
2	Supervised toothbrushing programme Public Health key contact	3
3	Setting up your supervised toothbrushing club	4
4	Infection prevention and control	7
5	How to carry out a toothbrushing club session	10
6	References	11
Appendix 1	Agreement between supervised toothbrushing club partners	12
Appendix 2	Model information and consent letter	14
Appendix 3	Quality assurance checklist	16
Appendix 4	Wall charts	18



1. Introduction



A healthy mouth and smile mean we can eat, speak and socialise without pain and discomfort. However, almost 30% of five-year-olds in Barnsley have tooth decay. Evidence shows that supervised toothbrushing reduces tooth decay for all children, especially those living in more deprived areas. [The Health matters: child dental health guidance](#) explains that poor oral health can lead to pain and infection, resulting in sleepless nights, difficulty eating and time off nursery or school. Toothbrushing Clubs also help settings to meet the elements of the OFSTED framework.

Every time we eat sugary foods or drinks, plaque bacteria produce acid, which attacks the teeth. Frequent acid attacks lead to tooth decay. Tooth decay can be prevented by reducing the consumption of sugary foods and drinks; and by strengthening the teeth through brushing with fluoride toothpaste.

Nurseries and schools provide a supportive environment to teach about oral health; run supervised toothbrushing clubs so children learn how to brush their teeth; and promote toothbrushing and healthy eating at home. Oral health is an important part of the [Early Years Foundation Stage Statutory Framework](#) and [health and science education](#).

This toolkit will help you run a supervised toothbrushing club, implementing the [Government's national guidance](#) on commissioning and delivering supervised toothbrushing schemes in early years and school settings.

This toolkit will be updated when guidance changes.



2. Supervised toothbrushing programme public health key contact

The supervised toothbrushing clubs within our primary schools, Family Hubs, Early Years settings and childminders are overseen by Barnsley Council's Children and Young People's Public Health Team. For organising training, ordering equipment and resources and any questions, email: oralhealth@barnsley.gov.uk



3. Setting up your supervised toothbrushing club

Speak to the public health key contact for: help setting up your supervised toothbrushing club; training staff to become supervisors; ordering equipment; and for general advice and support.

Identify a toothbrushing club lead within your setting to liaise with the the Public Health Team and complete the agreement outlining roles and responsibilities (Appendix 1).

All supervising staff involved in the daily running of the toothbrushing club should: read the Barnsley Supervised Toothbrushing Club Toolkit 2025; complete the 2025 version of the Barnsley Council online learning platform POD training (search for 'oral health'); and train on-site within the setting.

Those who trained prior to September 2025, should read the 2025 toolkit, undergo refresher POD and on-site training, and implement changes in their setting as required. Keep records of training.

Equipment needed

*Please contact public health for all equipment and replacements (denoted *) to ensure compatibility and fit.*

Brush racks and covers*

The racks come pre-printed with sets of picture symbols (e.g. animals, healthy snacks) inside coloured boxes (red, green, blue or yellow).

Each child has their own picture symbol.

You will need to stick the strip of blank name stickers (with boxes the same colour as the picture symbols) onto the rack. Fill in the children's names for each rack slot with indelible pen.

If the class-size requires multiple racks, they should be different colours or have different sets of picture symbols.

Covers should always be replaced onto their own rack. Mark each rack and their associated cover with a number and attach the rack cover sticker (which matches the rack colour) onto the cover to keep them together.



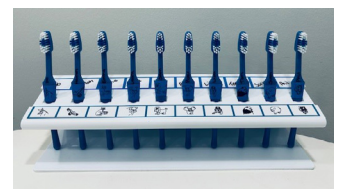
Toothbrushes*

The colour of the toothbrushes will be the same as the colour of the rack stickers.

Each child should have their own toothbrush, which has their picture symbol sticker (corresponding to their rack slot picture) stuck onto the handle. The picture symbols should be visible when the brushes are in the rack. Please also write their name on their toothbrush handle in indelible pen. A layer of clear nail varnish on top may stop it rubbing off.

The toothbrushes stand upright with the bristles pointing towards the front of the rack, so they do not touch each other or the cover.

For those who need assistance with toothbrushing, toothbrushes are available with adaptations, please speak to public health for more information if required.



Toothpaste

Containing 1350-1500ppm fluoride, and free from animal products and gluten.

Non-foaming and non-flavoured fluoride toothpaste is also available upon request for children with swallowing or sensory difficulties.

Please check with the carers/health professionals if there are concerns as to whether the child will be able spit out or swallow, as other precautions may be needed to prevent choking.

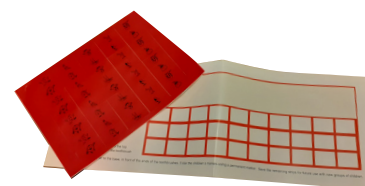
Label with the date upon opening and use within time specified on tube.



Replacement toothpaste, toothbrushes and rack/toothbrush stickers

Toothbrushes must be replaced termly or if they are damaged, the bristles become splayed or the brush falls on the floor or touches another brush. Replacement picture stickers for brushes will be needed every time a brush is replaced or if they start to peel.

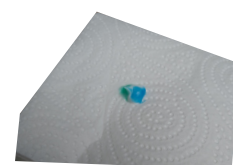
Replacement rack stickers are needed so racks can be cleaned and reused with a new set of children.



Wallcharts

For recording children's names against picture symbols for each rack.

See <https://thebrushbus.com/pages/symbols-and-wallcharts-for-bus-rack>.



Paper towels and plates

Toothpaste is dispensed onto individual paper towels, which are also used to spit excess toothpaste into. If a child would find it easier to spit into an individual sink rather than a paper towel, please contact public health for further guidance.

Toothpaste could also be dispensed, well-spaced, onto paper plates. All paper products should be biodegradable. They may be recycled unless covered in toothpaste/spit.

Hand sanitiser, and sink area for handwashing and rinsing brushes

Supervisors and children must wash their hands or use hand sanitiser (alcohol hand gel) before and after the toothbrushing session. Wash hands rather than using hand sanitiser if visibly soiled. Cover cuts/abrasions/breaks in skin with a waterproof dressing.

Children individually rinse their brush immediately after use.

Personal Protective Equipment (PPE)

PPE such as disposable aprons and disposable nitrile gloves should be available for supervisors to wear if they are likely to come into contact with bodily fluids like saliva (spit) or blood during the session e.g. if they need to handle a contaminated toothbrush or provide individual support to a child with additional needs. Household gloves are required for cleaning and disinfection processes. See page 7 for more details.

Settings are responsible for buying and providing PPE.

Standard cleaning and disinfectant products (e.g. detergents and bleach)

For cleaning and disinfecting racks and covers, storage area, toothbrushing area and sinks (see page 8 and 9 for details).



Mouth model and demonstration toothbrush

For demonstration only if available – not to be used in anyone's mouth. Supervisors should ideally use models or videos to demonstrate to the children how to brush.

If staff wish to brush their own teeth during the session, they must wash their hands after brushing and before carrying on with supervising the toothbrushing club, and store their toothbrush and toothpaste separately from the children's racks.

Running the supervised toothbrushing sessions

Children aged two and over may participate. Please note children will be brushing their own teeth.

Supervisors must not brush any child's teeth or touch any toothbrushes.

Any child taking part must be able (under supervision) to:

- collect their toothbrush from their slot in the rack
- transfer their dispensed blob of toothpaste onto their brush
- brush their teeth
- rinse their toothbrush after use, and
- replace it into the correct slot in the correct toothbrush rack.



If a child needs support with any part of the supervised toothbrushing club, the supervisor providing assistance will need to wear PPE if they are likely to come into contact with bodily fluids e.g. spit (saliva), blood.

There are very few medical reasons why children should not participate in the club. Children with infections or oral ulceration, such as mouth ulcers or cold sores, should be temporarily excluded. Toothbrushing at home can continue as this will usually aid healing.

Children returning to school after being unwell can usually recommence the toothbrushing club unless not permitted by local precautions or guidelines. If a child has a confirmed notifiable disease or if there are suspicions that a child may have a notifiable disease, please seek advice (around whether individuals can take part in the toothbrushing club and the management of other children/staff) from the local health protection team (via the public health team). Also, seek advice regarding the risk for individual children if the parents/carers inform the setting that a child has specific medical conditions (e.g. cystic fibrosis, blood-borne viruses).

If you need urgent health protection advice and you cannot contact the Barnsley Council Public Health Team, contact the Yorkshire and Humber Health Protection Team on 0300 303 0234

<https://www.gov.uk/guidance/contacts-phe-health-protection-teams>

Parents or carers should provide consent, which could be included within induction processes (see Appendix 2 for model information and consent letter).

Consent forms should be retained by the setting. Staff must know who is not consented or not taking part for medical reasons.

Decide on a convenient time and location to run your toothbrushing session once a day and how you will ensure good supervision.

All settings need to complete a quality assurance checklist (Appendix 3) once a term for each class/room and email it to public health. Public health will also visit to check procedures at each setting at least once a year, and provide advice, feedback and follow-up visits as required. If there are any concerns sessions, may be paused.

4. Infection prevention and control

Toothbrushes are a possible source of cross-infection, so the supervised toothbrushing club must be carried out carefully following the guidance below and [UKHSA guidance on health protection in children and young people settings, including education \(preventing and controlling infections\)](#).

Children will usually use the 'dry brushing' method whereby they sit/stand in a cleanable, well-ventilated area (e.g. at their table) and spit toothpaste into a paper towel rather than into a sink. This is the method described in this toolkit. However, if your setting would prefer to do 'wet brushing' whereby they spit into a sink, please contact public health for specific additional advice.

Supervisors can provide verbal support but must not handle the toothbrushes or brush any child's teeth. Each child must collect their toothbrush from their rack slot; collect and transfer their dispensed blob of toothpaste onto their brush; collect a paper towel or tissue (to spit into and wipe their mouth); brush their teeth; rinse their brush and put it back in their rack slot.

Discretion should be used if a child has additional support needs. Personal Protective Equipment (PPE) should be worn by the supervisor if they need to support a child and are likely to come into contact with bodily fluids e.g. saliva/blood.

Hand hygiene:

Supervisors and children must wash their hands or use hand sanitiser (alcohol hand gel) before and after the toothbrushing session. Wash hands rather than using hand sanitiser if visibly soiled.



Cover cuts, abrasions or breaks in the skin with a waterproof dressing.

Personal Protective Equipment (PPE)

There is usually no need for the supervisor to wear PPE. However, PPE such as disposable aprons and gloves should be available for supervisors to wear if they are likely to come into contact with bodily fluids like saliva (spit) or blood during the session e.g. if they need to handle a contaminated toothbrush or provide individual support to a child with additional needs.



A new pair of nitrile disposable gloves (latex and powder-free, CE marked) should be used for supporting each individual child or handling each contaminated toothbrush. The supervisor needs to wash or disinfect their hands between glove changes (after taking gloves off and before putting a new pair of gloves on). Disposable aprons should be changed when they become heavily soiled or contaminated with bodily fluids such as saliva or blood.

Household gloves are required for cleaning and disinfection processes.

Equipment:

Toothbrushes are individually labelled with the child's picture identifier sticker and name in an indelible pen. A layer of clear nail varnish on top can prevent the name from wearing off. The toothbrush will be the same colour as the rack and toothbrush stickers. The child's rack slot will also be labelled with the child's name and the same picture identifier as the toothbrush.



The picture sticker on the toothbrush should be positioned so it is visible when the toothbrush is in the rack.

The toothbrushes stand upright with the bristles pointing towards the front of the rack so they do not touch each other or the cover. Ensure toothbrushes do not touch each other when being removed from or replaced into the rack. Toothbrushes must be replaced termly, or if damaged, the bristles become splayed, or it falls on the floor or touches another brush.

Each child must know their toothbrush and rack slot picture and colour. They should be able to identify their rack and their toothbrush slot to collect their brush. They must always replace their brush into their own slot in their rack following rinsing.

Wall charts are available [here](#) for each rack to write each child's name against their identification picture and the colour of the rack stickers and toothbrushes.

Racks should not be placed directly beside the toothbrushing area or toilet area to avoid contamination via aerosol spread.

Racks should be replaced if cracks, scratches or rough surfaces develop.

Rack covers should be replaced onto their own rack after the brushing session. Mark each rack and their associated cover with a number to keep them together and attach the rack cover sticker (which matches the rack colour) onto the cover. They have ventilation slits that provide adequate ventilation to enable the brushes to dry.

Store racks in a designated toothbrush storage trolley or a clean, dry cupboard. It is not appropriate to store racks in toilet areas.

Toothpaste:

Toothpaste must not be dispensed onto toothbrushes. Instead, the supervisor should place a small blob onto a clean surface, such as an individual paper towel or paper plate, for the child to transfer onto their brush.



Ensure sufficient spacing of dispensed toothpaste to allow transfer to each child's brush without cross-contamination.

Encourage children to raise their paper towels to their mouths to spit out excess toothpaste and dispose of used paper towels immediately into a waste bag. Children should not rinse their mouths.

Cleaning and disinfection:

Cleaning of toothbrushes

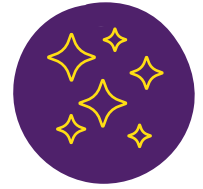
The toothpaste must not be allowed to dry on the brush, and toothbrushes must not be washed together.



Each child should rinse their toothbrush and handle individually at a sink under cold running water straight away after brushing and shake off excess water into the sink, taking care not to make contact with the sink or taps. Leave the tap running to avoid the children touching the taps. If this process would be difficult, please speak to public health to discuss an alternative way.

Toothbrushes must not be soaked in bleach, other cleaner or disinfectant.

Cleaning and disinfection of racks, covers and surfaces



Wash/sanitise hands, cover cuts/abrasions/breaks in the skin with a waterproof dressing, and wear dedicated household gloves when undertaking cleaning and disinfection processes.

After toothbrushing, use paper towels to mop up any visible drips on racks. Areas where toothbrushing has taken place (sinks and surfaces) should be cleaned and disinfected following national guidance, using standard products such as detergents and bleach.

Racks, covers, trolleys and storage areas should be cleaned, rinsed and dried at least once a week (more often if soiled) using warm water and household detergent. Take care not to remove picture/name labels, and re-write on names if they fade.

The racks may also be washed in the top shelf of a dishwasher, however please be aware that dishwasher cleaning would remove any identification stickers. As such, you are only likely to use a dishwasher after you have removed the stickers ready for re-using the racks with a new set of children.

- Please ensure that cleaning products meet manufacturers' guidelines and do not remove the picture symbols, names or labels.
- Disinfectant wipes are not recommended for use on racks but could be used on sinks.
- Cleaning the racks should ideally be done once children have collected their brushes to begin brushing.
- If you plan to reuse storage racks with a new set of children, remove the old rack stickers, clean and dry racks thoroughly, and apply new stickers.

Waste



Dispose of used paper towels and PPE immediately in waste bags. See UKHSA guidance for more information on [safe disposal of waste](#).

Health Protection

Please see page 6 for information about infectious diseases and how to seek advice from the UKHSA Health Protection team. Whilst awaiting advice, please suspend your toothbrushing club and inform the public health team.

"I like cleaning
my teeth at
nursery; it gives
me a nice smile."

5. How to carry out a toothbrushing club session

1. Ensure there are enough supervisors to oversee the session.
2. Supervisors and children wash hands or use hand sanitiser (alcohol hand gel). Supervisors and children cover cuts, abrasions or breaks in the skin with a waterproof dressing. Supervisors should wear PPE if likely to come into contact with bodily fluids e.g. if they need to handle a contaminated toothbrush or support a child with any part of the process. Change gloves and wash/disinfect hands after use with an individual child/toothbrush. (see page 7 for details).
3. The supervisor should dispense a blob of toothpaste onto an individual paper towel or paper plate (with spacing) for the child to collect and transfer onto their brush. The amount they need depends on their age.
 - A smear of toothpaste is needed for children under three
 - A pea-sized amount is used for children aged three to six years
4. Children, under supervision, should collect their toothbrushes from their rack, a paper towel and their dispensed toothpaste.
5. Children should sit or stand in the toothbrushing area and brush for at least two minutes. A supervisor may wish to demonstrate brushing on a model or play toothbrushing music.
6. Children should be encouraged to raise the paper towel to their mouth, spit out excess toothpaste into it, and wipe their mouths. Children should be discouraged from swallowing toothpaste and should not rinse.
7. Dispose of paper towels and paper plates immediately into a waste bag.
8. Each child (under supervision) should individually rinse their own toothbrush and handle at a sink under cold running water straight away and shake off excess water, taking care not to contact the sink/taps with it. Leave the tap running to avoid the children touching the taps. Brushes must not be washed together.
9. Each child, under supervision, returns their brush to their own slot in the correct rack.
10. Replace the rack's own cover.
11. Wash/sanitise hands, cover cuts/abrasions/breaks in the skin with a waterproof dressing, and wear dedicated household gloves when undertaking cleaning and disinfection processes. After toothbrushing, use paper towels to mop up any visible drips on the racks. Areas where toothbrushing has taken place (sinks and surfaces) should be cleaned and disinfected following national guidance, using standard products such as detergents and bleach.
12. Racks and covers, trolleys and storage areas should be cleaned, rinsed and dried at least once a week (more if soiled) using warm water and household detergent. Take care not to remove picture/name labels, and re-write on names if they fade.
13. After the session, children and supervisors must wash their hands or use hand sanitiser.



6. References

Office for Health Improvement and Disparities (2025). Improving oral health: supervised toothbrushing toolkit. A toolkit to support commissioning of supervised toothbrushing programmes in early years settings and schools. Available at: <https://www.gov.uk/government/publications/improving-oral-health-supervised-tooth-brushing-programme-toolkit> [Accessed 02.06.2025].

Office for Health Improvement and Disparities, Department of Health and Social Care, NHSEI (2021). Delivering Better Oral Health: an evidence-based toolkit for prevention. Available at: <https://www.gov.uk/government/publications/delivering-better-oral-health-an-evidence-based-toolkit-for-prevention> [Accessed 02.06.2025].

UKHSA (2025). Health Protection in Children and Young People's Settings, including education: Preventing and Controlling Infection. Available at: <https://www.gov.uk/government/publications/health-protection-in-schools-and-other-childcare-facilities> [Accessed 02.06.2025].

Department for Education (2024). Early Years Foundation Stage (EYFS) Statutory Framework. Available at: <https://www.gov.uk/government/publications/early-years-foundation-stage-framework-2> [Accessed 02.06.2025].

Department for Education (2025). Oral health: how to promote good oral health to young children in your setting. Available at: <https://help-for-early-years-providers.education.gov.uk/health-and-wellbeing/oral-health> [Accessed 02.06.2025].

PHE (2017). Health Matters: Child Dental Health. Available at: <https://www.gov.uk/government/publications/health-matters-child-dental-health>.

The Brush Bus Ltd. Symbols and wallcharts for rack. Available at: <https://thebrushbus.com/pages/symbols-and-wallcharts-for-bus-rack> [Accessed 12/08/2025]



APPENDIX 1:

Agreement between Supervised Toothbrushing Club (STC) partners

Barnsley Council Children's Public Health Team responsibilities

1. Provide every setting with the Barnsley Supervised Toothbrushing Club (STC) Toolkit (2025) for implementation.
2. Provide training for all staff that supervise and deliver the STC to ensure effectiveness and safe delivery. Training includes infection prevention and control.
3. Have access to a dental professional for advice if needed.
4. Provide resources for STC.
5. Ensure parents are fully informed about the STC by providing the setting with model information and a consent letter.
6. Quality assure the STC by making sure settings complete the quality assurance checklist each term and by observing a session every year.
7. Keep records of all the above.
8. Identify areas where children are at high risk of poor oral health and appropriate for targeted STC.
9. Facilitate coordination of the STC scheme in locality, and provide funding and oversight.

Toothbrushing club setting responsibilities

1. Identify a named toothbrushing club lead with overall responsibility for the setting.
2. Before supervising any sessions, STC supervisors should: read the Barnsley Supervised Toothbrushing Club Toolkit 2025; complete the 2025 version of the Barnsley Council online learning platform POD training; and train on-site within the setting. Those who trained prior to September 2025, should read the 2025 toolkit undergo refresher POD and on-site training, and implement changes in their setting as required. Keep records of training.
3. Provide supervised daily toothbrushing sessions.
4. Follow the protocol and infection prevention and control procedures as described in the STC Toolkit (2025).
5. Send information letters and consent forms out to parents and carers.
6. Ensure all children taking part have a signed consent form retained by the setting.
7. Ensure staff are aware of any children not taking part due to non-consent or medical reasons.
8. Ensure equipment is looked after and maintained in line with the STC toolkit and replaced as required.
9. Contact the Barnsley Council public health key contact for advice, training, and new or replacement racks, covers, toothbrushes and toothpaste.
10. Complete a quality assurance checklist once a term and email a copy to the Barnsley Council public health key contact.
11. Allow the Barnsley Council Public Health Team to observe STC sessions as part of the quality assurance process, and respond to any recommendations they make.

Provision of equipment

1. Barnsley Council Public Health Team will provide all initial and replacement racks, covers, toothbrush, rack, cover stickers and toothpaste.
2. In addition, toothbrush and toothpaste 'home packs' may be provided to support the programme and encourage the continuation of toothbrushing at home.

Opting out of the programme

If the decision is made to stop running the toothbrushing club at any time, the STC lead within the setting, should inform the Barnsley Council Public Health Team so arrangements can be made to collect any equipment and surplus stock. They should also inform the parents and governors.

We agree to working in partnership with the Barnsley Council Public Health Team to run a supervised toothbrushing club at our setting.

Name of setting (e.g. nursery or school)	
Address of setting	
Approximate number of children to take part in STC	
STC Lead in setting	PRINT NAME:
	SIGNATURE:
	DATE:
	TELEPHONE NUMBER:
	EMAIL:

APPENDIX 2:

Model information and consent letter

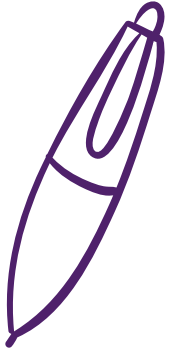
Contact details for setting

Date

Dear Parent/Carer

Re: Supervised Toothbrushing Club

We are giving children **aged two and over (amend as appropriate)** the opportunity to take part in a supervised toothbrushing club as part of the Council's efforts to improve oral health. This letter will explain the toothbrushing club, why we are doing it, and what you need to do if your child would like to participate.



What will the toothbrushing club involve?

All children taking part in the toothbrushing club will be provided with their own labelled toothbrush and brush their teeth with a fluoride toothpaste when they attend the **Family Centre/nursery/school/Childminder (delete as appropriate)**. They will be closely supervised by trained staff who have received oral health training. All toothbrushes will be kept in a clean storage rack and replaced termly.

Why are we doing it?

Almost 30% of five-year-olds in Barnsley have tooth decay. It's really important that children learn how to brush their teeth with fluoride toothpaste to strengthen their teeth and prevent tooth decay.

How can my child join the club?

For your child to take part in the toothbrushing club, we need your consent. If you would like your child to be involved, please fill out the consent form at the bottom of this letter and return it to us. We will keep you up to date with how the toothbrushing club is going and may ask you for feedback from time to time. You can opt out of the toothbrushing club at any time, but please let us know. If you have any questions about the programme or want any information, please ask the **Family Hub/nursery/school/childminder (delete as appropriate)**.

The toothbrushing club does not replace toothbrushing at home, so please continue to help your child brush twice a day at home (last thing at night and on one other occasion).

For maximum protection, check on the toothpaste packaging that it contains 1,350-1,500 parts per million (ppm) fluoride. Use a smear-sized amount of toothpaste for children under three years and a pea-sized amount for children aged 3-6 years. Encourage children to spit out but not rinse after brushing, so the fluoride can strengthen the teeth.



Please remember to take your child to the dentist regularly.

NHS dental care is free for children and they can have fluoride varnish painted on their teeth to help strengthen teeth and prevent decay. If you do not have a dentist, you can find your nearest NHS dentist at nhs.uk/service-search/find-a-dentist.

Yours faithfully,

Family centre manager/nursery manager/headteacher/childminder (amend as necessary)

Please complete this consent form for the Toothbrushing Club

Name of Family Centre/nursery/ school/Childminder	
Child's name	
Please tick one of the following:	
<input type="checkbox"/> I give permission for my child to join the toothbrushing club	
<input type="checkbox"/> I do not give permission for my child to join the toothbrushing club	
Signature of parent/guardian	
PRINT NAME	
Date	



APPENDIX 3:

Supervised Toothbrushing Club (STC)

Quality Assurance Checklist

Toothbrushing club lead to observe a session and complete checklist **once a term**, and email Barnsley Children's Public Health Team: oralhealth@barnsley.gov.uk, Where there are several classes or rooms, complete a checklist for each one.

Name of setting	
Class or room name	
Toothbrushing lead observing session	PRINT NAME Sign Date
Number of children in class or room consented for STC	
Number of children in class or room not consented	
Have there been any compliments or concerns about the STC this term?	
Have any oral health activities taken place this term?	

Quality standard		Is standard met?		
		Yes	No	Comment
	Organisation and equipment			
1	All supervisors have read Barnsley STC Toolkit 2025.			
2	All supervisors have completed STC 2025 online POD training and on-site training. Those trained prior to September 2025 have undertaken refresher POD and on-site training. Records are kept of training.			
3	All supervisors know how to contact the Barnsley Council Public Health Team for advice.			
4	There are signed consent forms for all children doing STC (and records kept).			
5	Supervisors know which children are not taking part due to non-consent or medical reasons (and records kept).			
6	Each child has their own toothbrush. The colour, picture symbol and names on the toothbrushes correspond to those on the racks.			
7	Picture symbol stickers are visible when brushes are in racks.			
8	Where there are multiple racks, they have different coloured rack stickers or different sets of pictures.			
9	Toothbrushes have been replaced this term (or sooner if damaged, the bristles become splayed, it fell on the floor or touched another brush).			
10	Wallcharts are in use for each rack to match the child's name with their picture identifier and the colour of the rack stickers and toothbrushes.			
11	Racks have their own covers and are clean and in good condition.			

Quality standard		Is standard met?		
		Yes	No	Comment
	Organisation and equipment			
12	Toothbrushes in the racks are upright with bristles pointing towards the front of the racks, and are not touching each other or the cover.			
13	Racks are being stored in a clean, dry, cupboard or storage trolley.			
14	Toothpaste tube is dated with the date it was opened and is within time specified on tube.			
15	Children take part in a STC session every day.			
	Observing session			
16	Supervisors and children wash hands or use hand sanitiser (alcohol hand gel) before and after the session and cover cuts, abrasions or breaks in the skin with a waterproof dressing.			
17	PPE (e.g. latex-free disposable nitrile gloves and apron) is worn if there is a risk of contact with bodily fluids (e.g. saliva/blood). Gloves are changed after supporting an individual child or handling an individual toothbrush. Hands are washed/disinfected between glove changes.			
18	The correct amount of 1350-1500 ppm fluoride toothpaste is dispensed onto individual paper towels or well-spaced out on paper plate (smear for under 3's and pea sized for 3 years and over).			
19	Racks are not placed directly beside toothbrushing area or toilet area.			
20	Each child (under supervision) collects their own toothbrush from the rack (without touching other brushes), a paper towel and their dispensed toothpaste.*			
21	Children brush their own teeth. Supervisors do not handle toothbrushes or brush any child's teeth.*			
22	Children are encouraged to spit into paper towels, which are disposed into waste bag straight away. Children are discouraged from swallowing toothpaste and do not rinse their mouths.			
23	Each child rinses their own toothbrush individually at the sink (under supervision) with tap left running, and shakes off excess water into sink. Toothbrushes are not soaked in bleach, cleaner or disinfectant.*			
24	Each child replaces their own brush into their own slot in the correct rack without touching other brushes.*			
25	Covers and their corresponding rack are numbered and there is a rack cover sticker which matches the colour of the rack, so that covers are replaced onto their own rack after the session.			
26	Supervisors wash/sanitise hands, cover cuts/abrasions/breaks in skin with waterproof dressing and wear household gloves for cleaning and disinfection.			
27	After toothbrushing session, toothbrushing area and sinks are cleaned and disinfected with standard cleaning and disinfection products.			
28	There is a system in place to ensure racks, covers, trolleys and storage areas are cleaned with warm water and household detergent, rinsed and dried at least once a week (more often if soiled).			
29	The toothbrushing session has been well-supervised by a sufficient number of staff.			

*If a child needs assistance, the supervisor wears PPE if they are likely to come into contact with bodily fluids (e.g. blood/saliva), and gloves are disposed of after use with that child.

APPENDIX 4:

Wall Charts

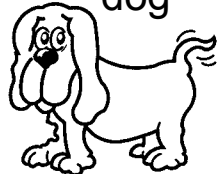
Wall Charts examples from [The Brush Bus](http://www.thebrushbus.com).

Class:

Animals Wallchart

Colour of Bus/Rack:

dog



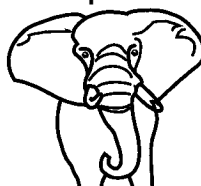
lion



tiger



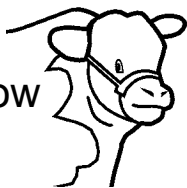
elephant



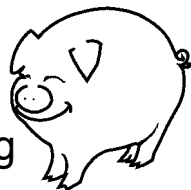
donkey



cow



pig



panda



bird



cat



2003-13 The Brush Bus Ltd



www.thebrushbus.com



Thank you for reading
to find out more please email
oralhealth@barnsley.gov.uk

