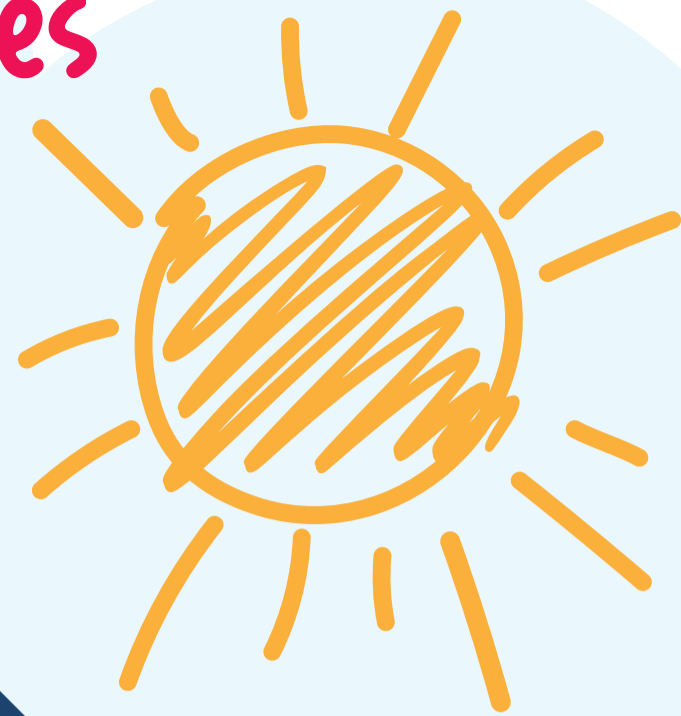


Barnsley Children's Services Stronger Together

Barnsley's Practice Principles focus on a strengths and relational-based way of working.



Our approach

Signs of Safety

Signs of Safety® is a strengths-based approach that brings the child into the centre of decision making and helps build safety through fortifying relationships and networks. The Signs of Safety model provides the principles which underpin the way in which professionals work with children, young people and their families.

Restorative Practice

This is an approach that supports practitioners in developing relationships with families to create and encourage positive change. Working with families to help build and maintain positive, healthy relationships, resolve conflict and facilitate healing. This leads to positive, long-lasting outcomes for children and families.

Graded Care Profile 2

(GCP2) is an assessment tool used by practitioners alongside families to look at the quality of care provided to children and young people. It helps us to identify what's working well and what could be improved. This can give a focus to support parents to get the help they need to make change.



Family Group Conferencing

When families need help to find solutions to difficulties, a coordinator supports a decision-making meeting. This enables the wider network of family and friends to develop a plan that can meet the children's needs.

Our interventions

Early Help

A whole-family approach focused on intervening early. This supports working with families so that small problems don't become big problems. Early Help is for everybody, for families with children and young people of any age.

Social Work Academy

Our Social Work Academy provides tools, training and continuous professional development. This ensures students and social workers at all stages of their careers are supported to develop expertise and lead interventions based on solution focused, evidence-based approaches. This helps to achieve better outcomes for children and their families.

Safe and Together

This model supports practitioners to enable children to remain in the care of the safe-parent. It encourages practitioners to think differently about how they approach domestic abuse.

Practice Development Hub

The Practice Development Hub drives evidence-based good practice by providing training, tools, support and guidance for our children's workforce. The Hub ensures practitioners have the right skills, knowledge and support to improve outcomes for children and their families.

Our Foundations

