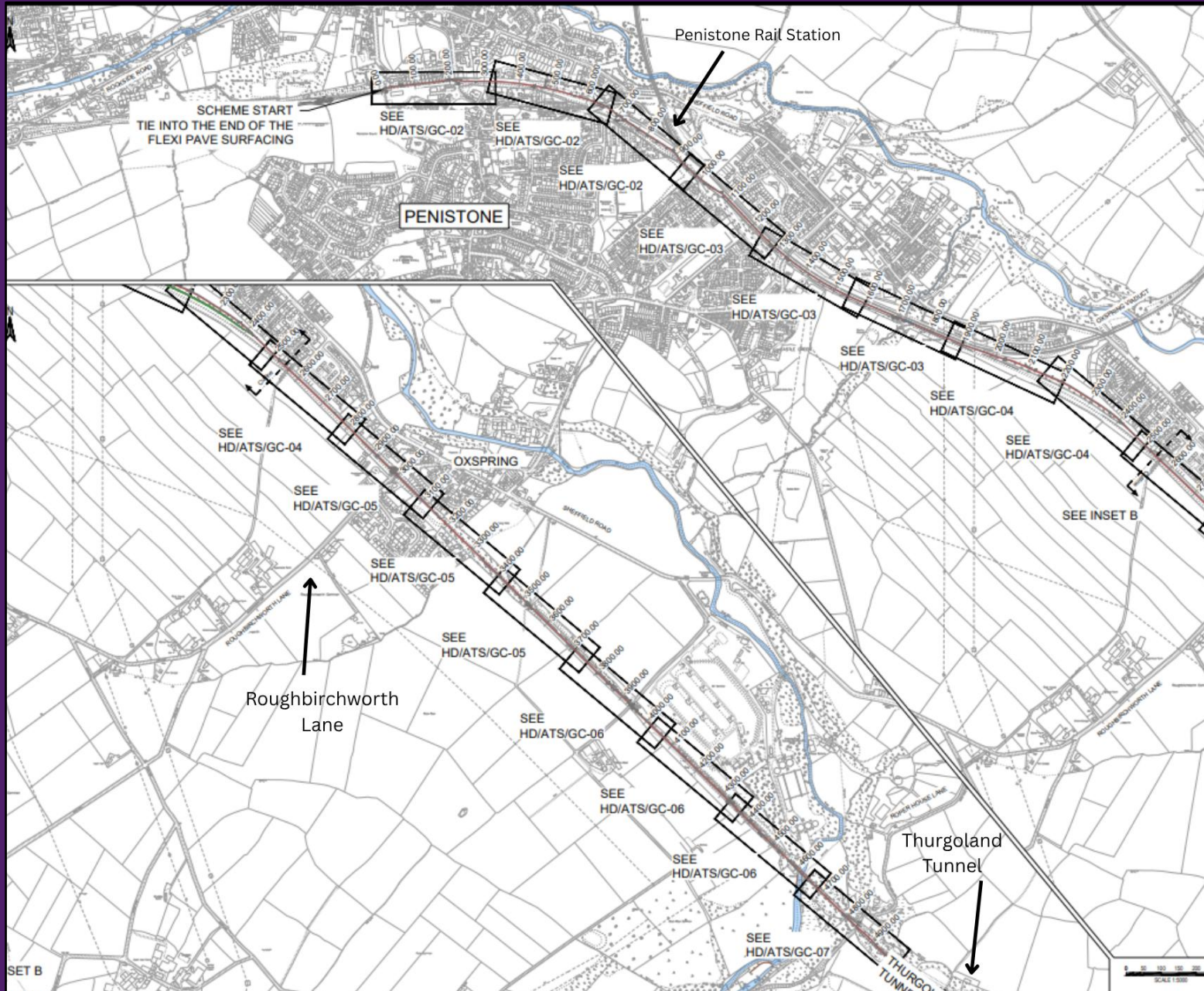




Penistone to Wortley TPT Active Travel Scheme



Scheme proposes to deliver:

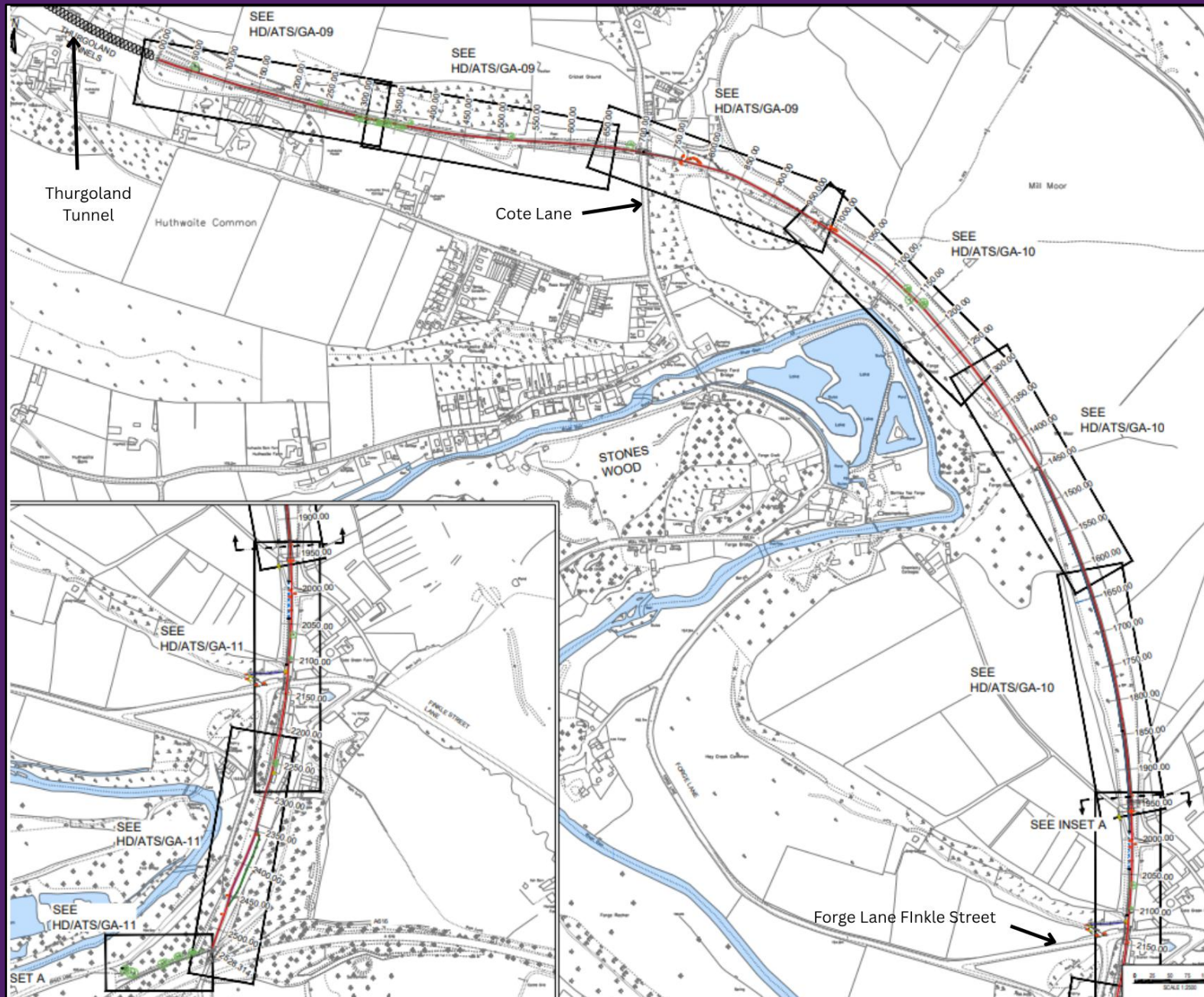
- A consistent level of quality along the Trans Pennine Trail between Penistone and Wortley in terms of route width and surfacing
- Alterations to access barriers
- Art and cultural enhancements
- Hedgerow planting and other biodiversity improvements

Overview 1 of 2 GC01



Funded by
UK Government

Penistone to Wortley TPT Active Travel Scheme



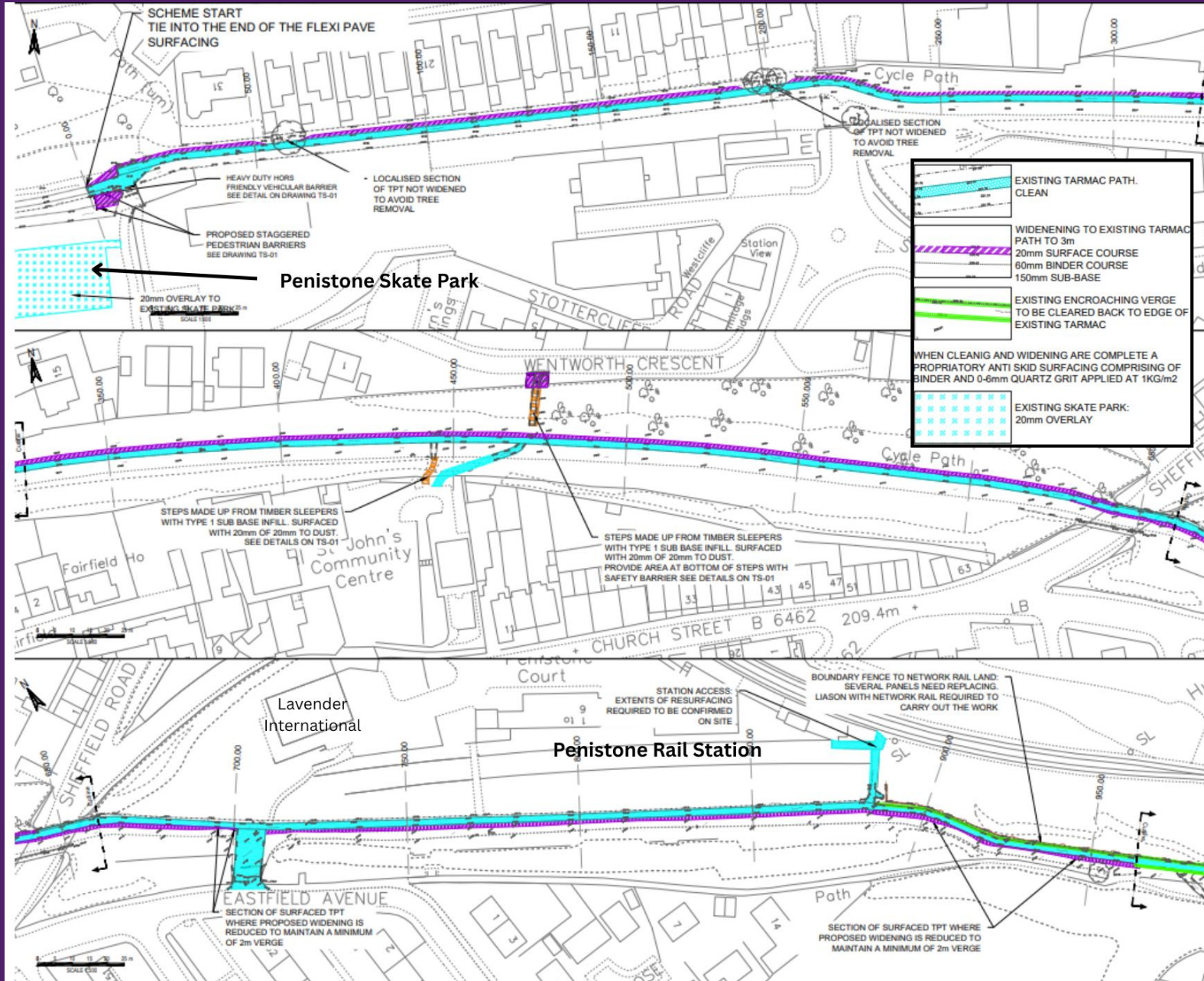
Scheme proposes to deliver:

- A consistent level of quality along the Trans Pennine Trail between Penistone and Wortley in terms of route width and surfacing
- Alterations to access barriers
- Art and cultural enhancements
- Hedgerow planting and other biodiversity improvements

Overview 2 of 2 GC08



Penistone to Wortley TPT Active Travel Scheme



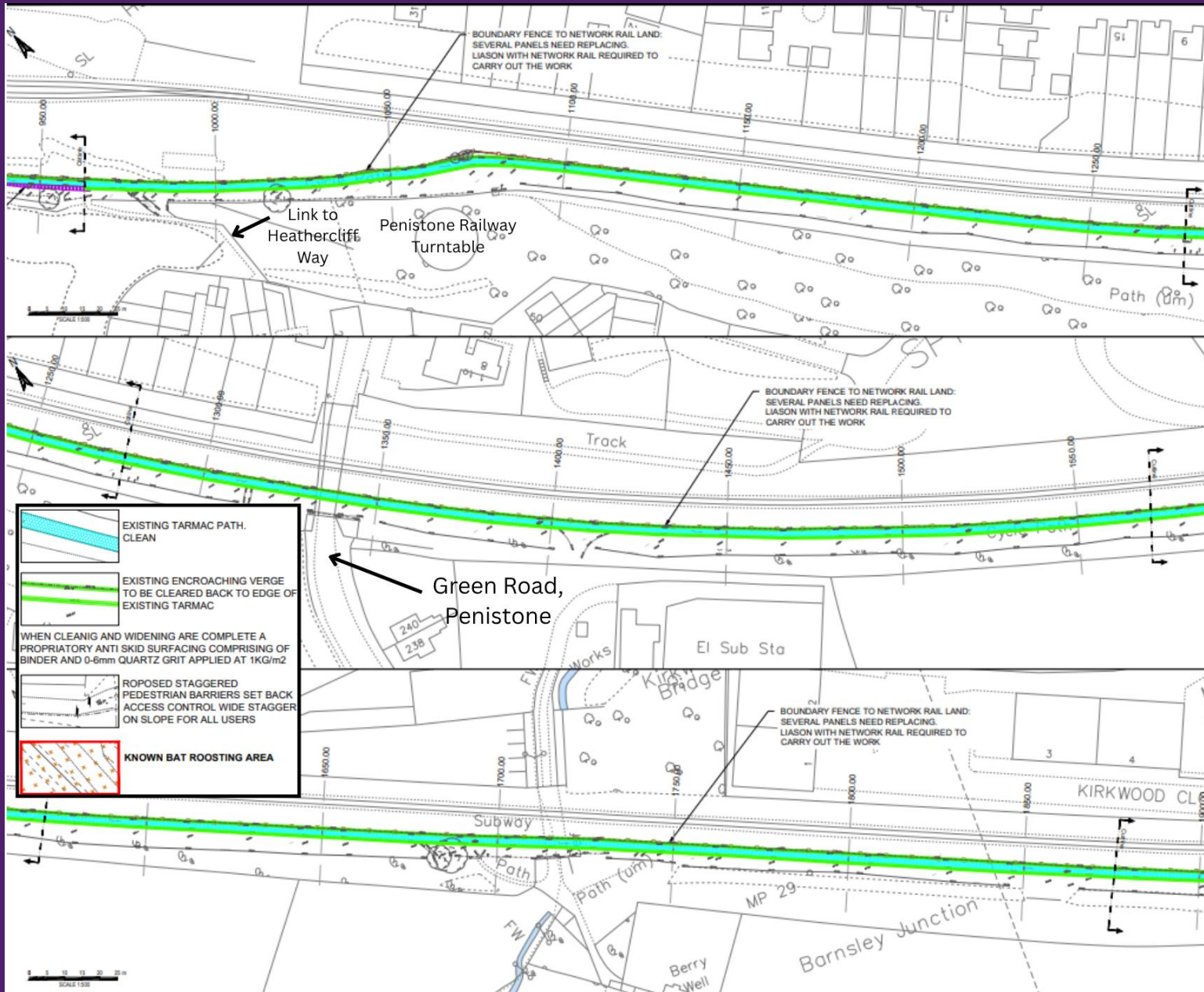
This Plan shows the section of TPT between Penistone Skate Park and Penistone Rail Station.

Improvements within this section include:

- Widening of tarmac path and application of anti-skid surface dressing
- Alterations to access barriers
- Art and cultural enhancements
- Maintaining wide verge for equestrians



Penistone to Wortley TPT Active Travel Scheme



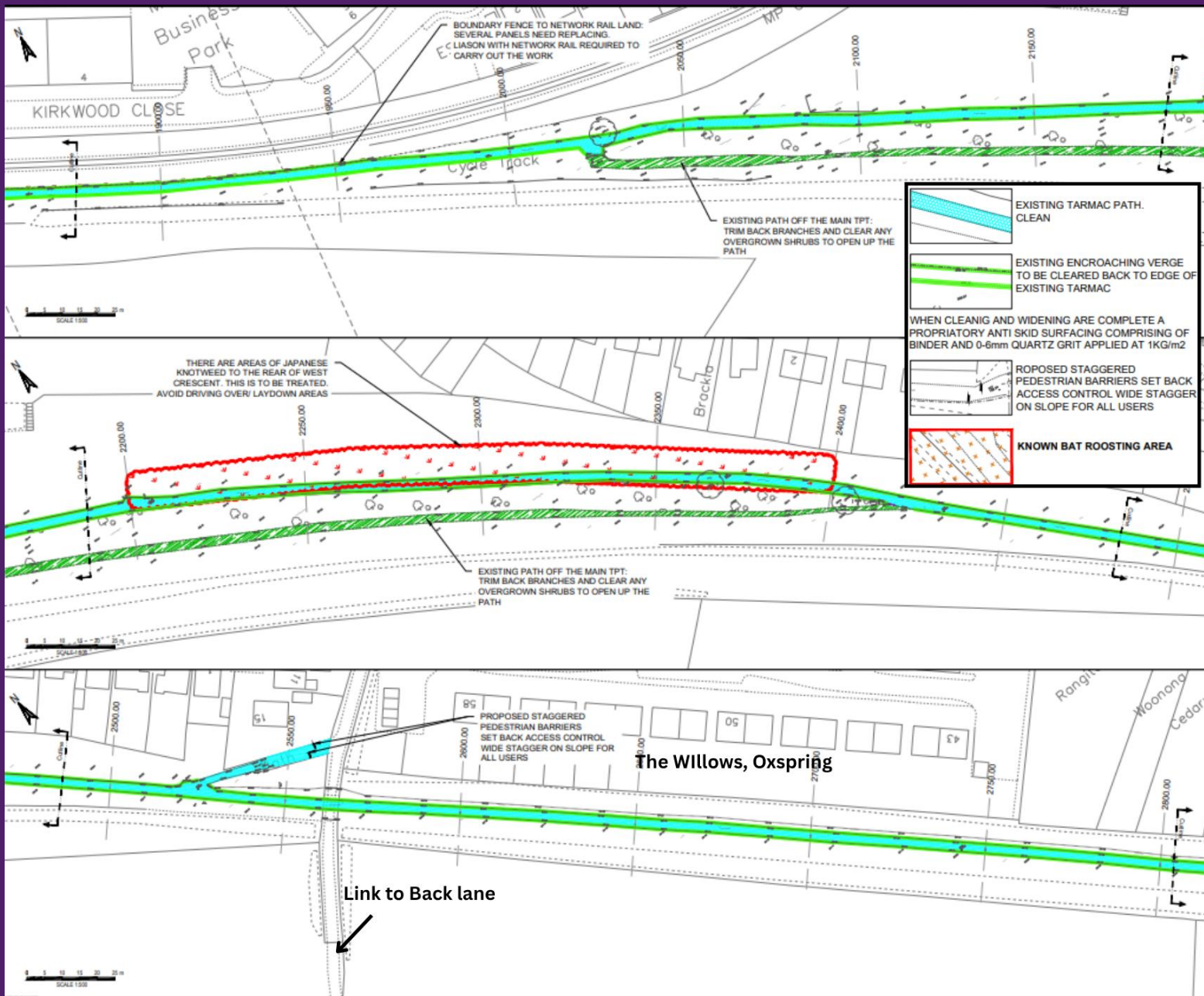
This Plan shows section of TPT between Penistone Rail Station and Kirkwood Close

Improvements within this section include:

- Clear existing tarmac track of encroaching verge and reapply anti-skid surface dressing
- Alterations to access barriers
- Art and cultural enhancements



Penistone to Wortley TPT Active Travel Scheme



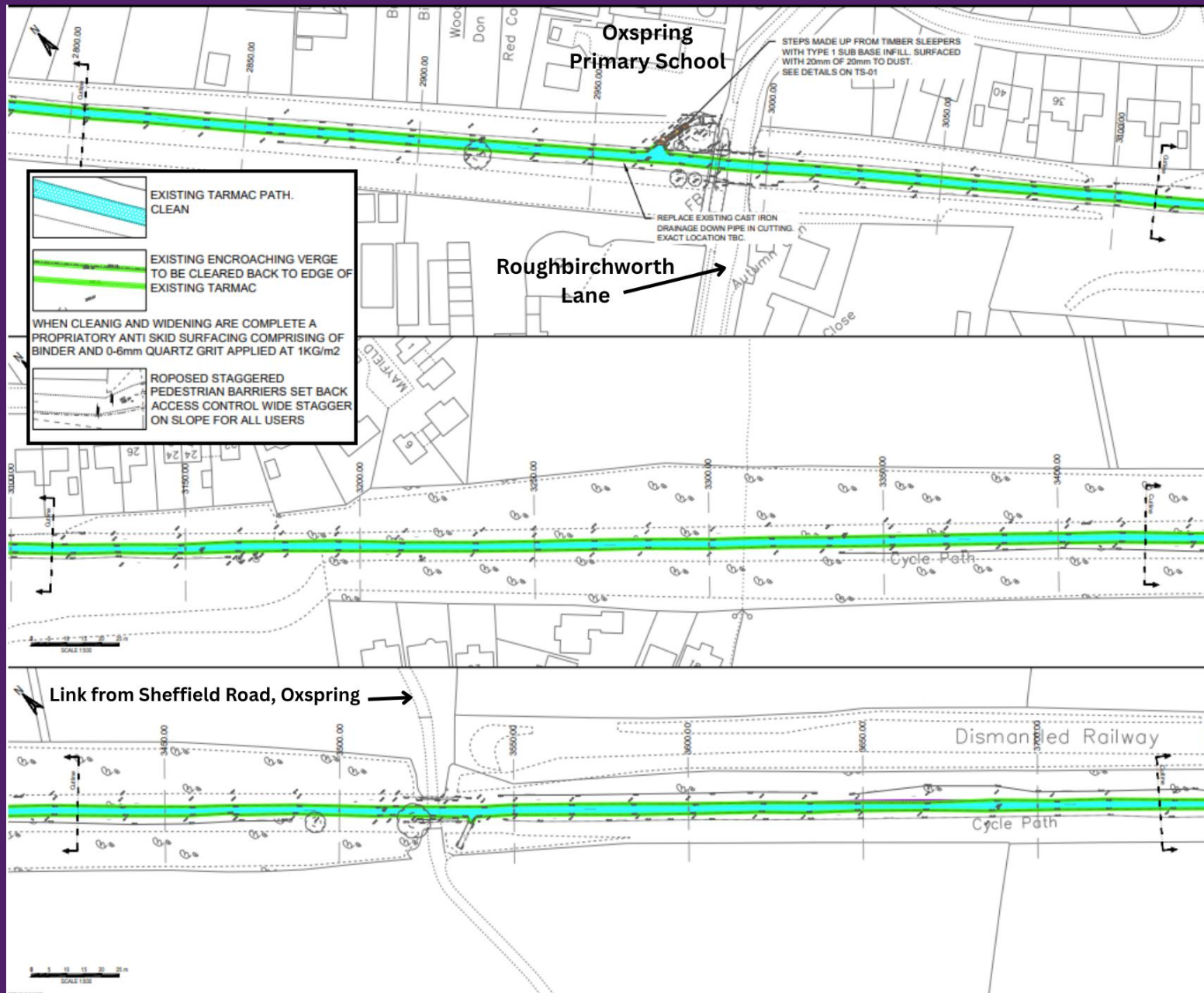
This Plan shows section of TPT between Kirkwood Close and the Willows, Oxspring

Improvements within this section include:

- Clear existing tarmac track of encroaching verge and reapply anti-skid surface dressing
- Alterations to access barriers
- Art and cultural enhancements



Penistone to Wortley TPT Active Travel Scheme



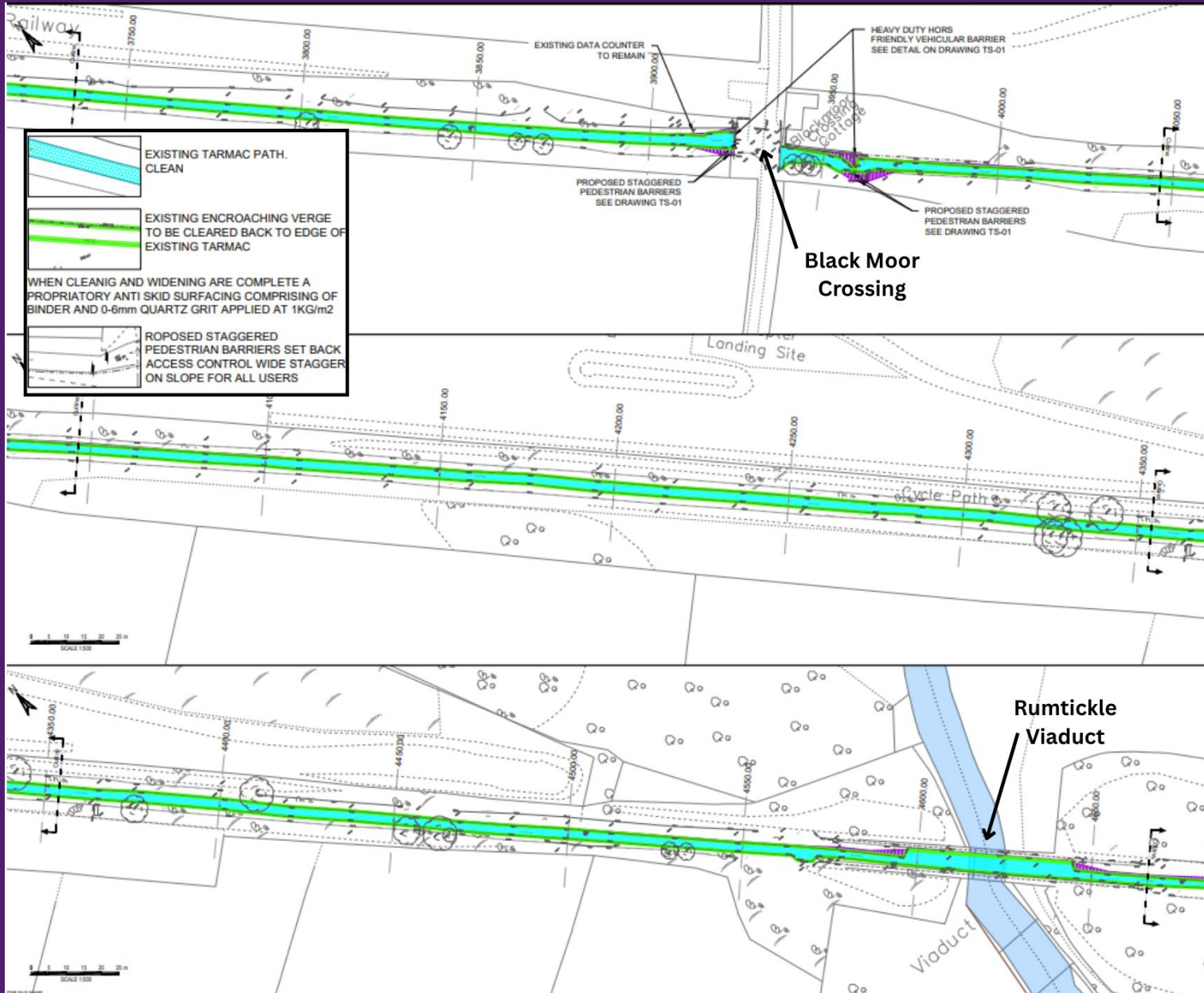
This plan shows the section of TPT between The Willows, Oxspring and the link to Sheffield Road

Improvements within this section include:

- Clear existing tarmac track of encroaching verge and reapply anti-skid surface dressing
- Alterations to access barriers
- Art and cultural enhancements



Penistone to Wortley TPT Active Travel Scheme



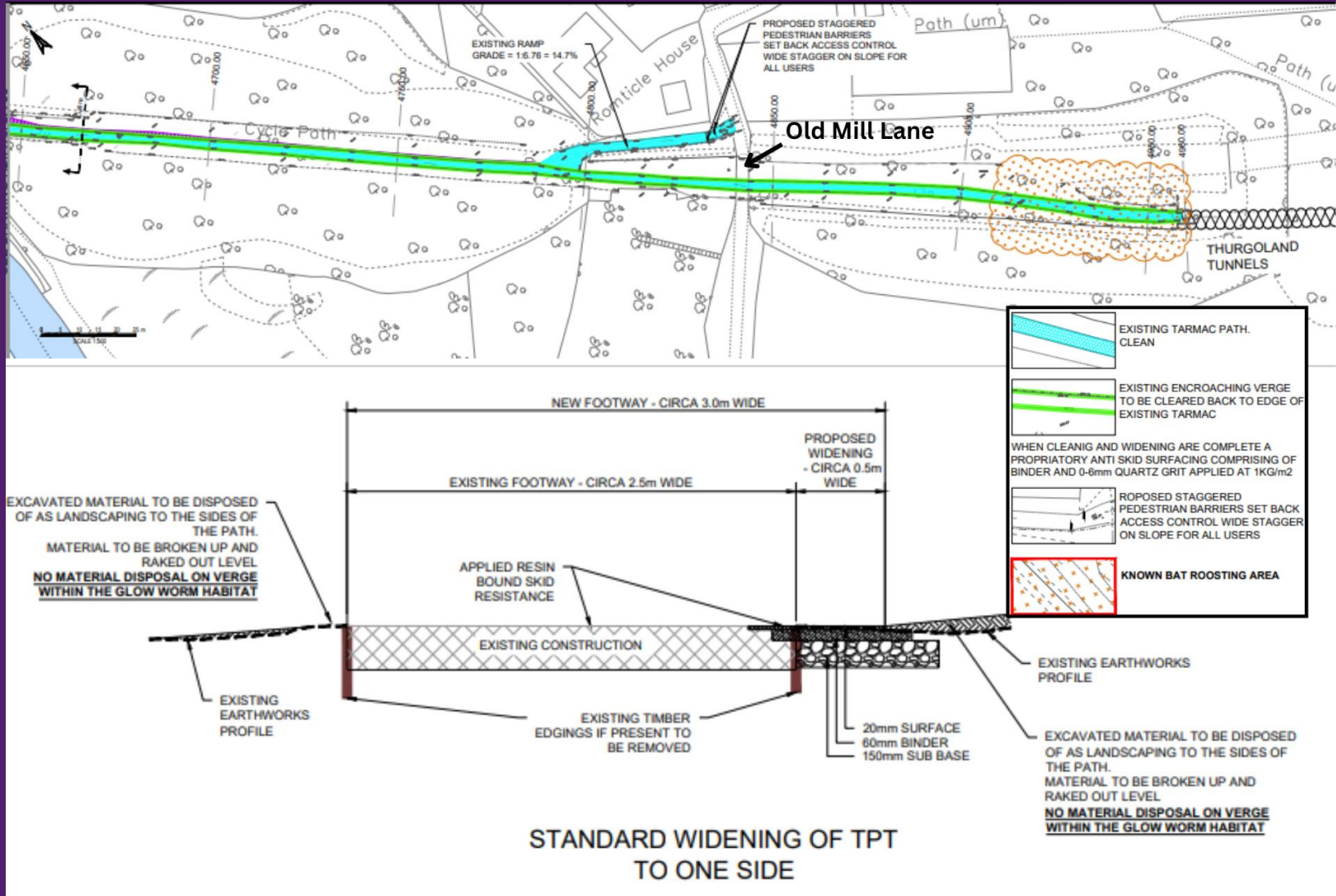
This plan shows the section of TPT between Black Moor Crossing and Rumtickle Viaduct

Improvements within this section include:

- Clear existing tarmac track of encroaching verge and reapply anti-skid surface dressing
- Alterations to access barriers



Penistone to Wortley TPT Active Travel Scheme



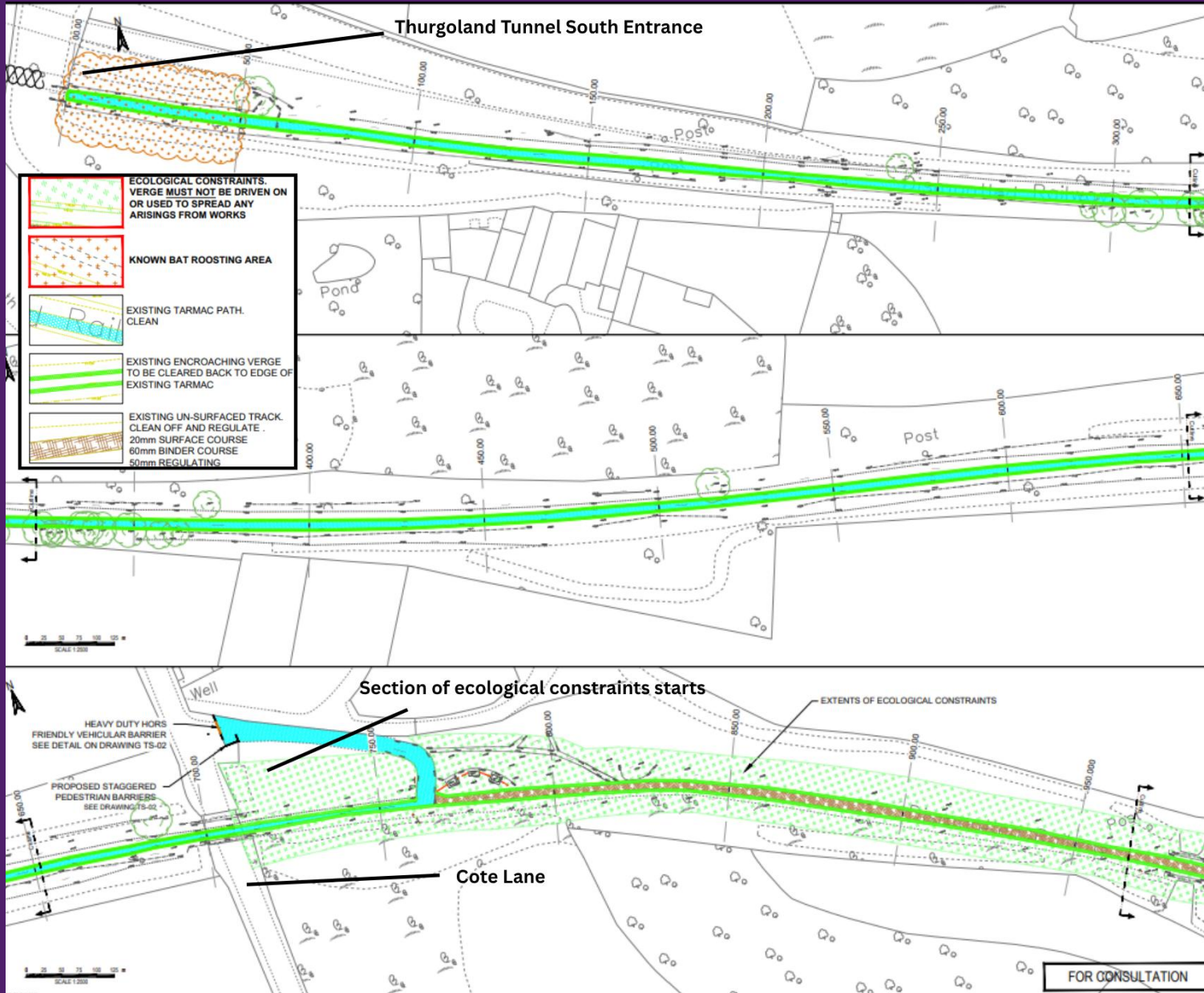
This plan shows the section of TPT between Rumtickle Viaduct and Thurgoland Tunnels north entrance

Improvements within this section include:

- Clear existing tarmac track of encroaching verge and reapply anti-skid surface dressing
- Alterations to access barriers
- Art and cultural enhancements



Penistone to Wortley TPT Active Travel Scheme

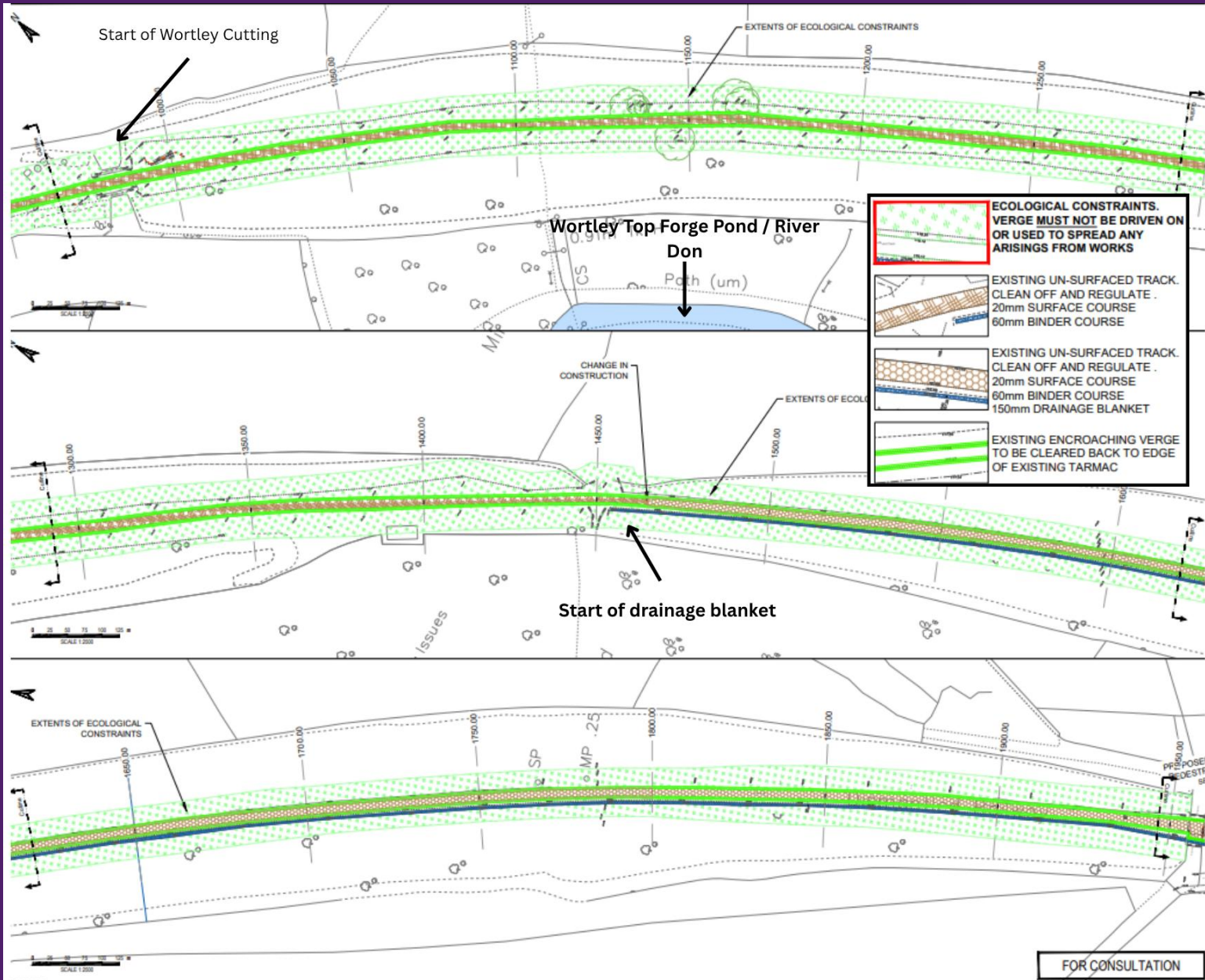


This plan shows the section of TPT between Thurgoland Tunnels south entrance and Cote Lane

Improvements within this section include:

- Clear existing tarmac track of encroaching verge and reapply anti-skid surface dressing, north of Cote Lane
- Alterations to access barriers
- Construction of Tarmac path with anti-skid surface dressing from Cote Lane heading south

Penistone to Wortley TPT Active Travel Scheme



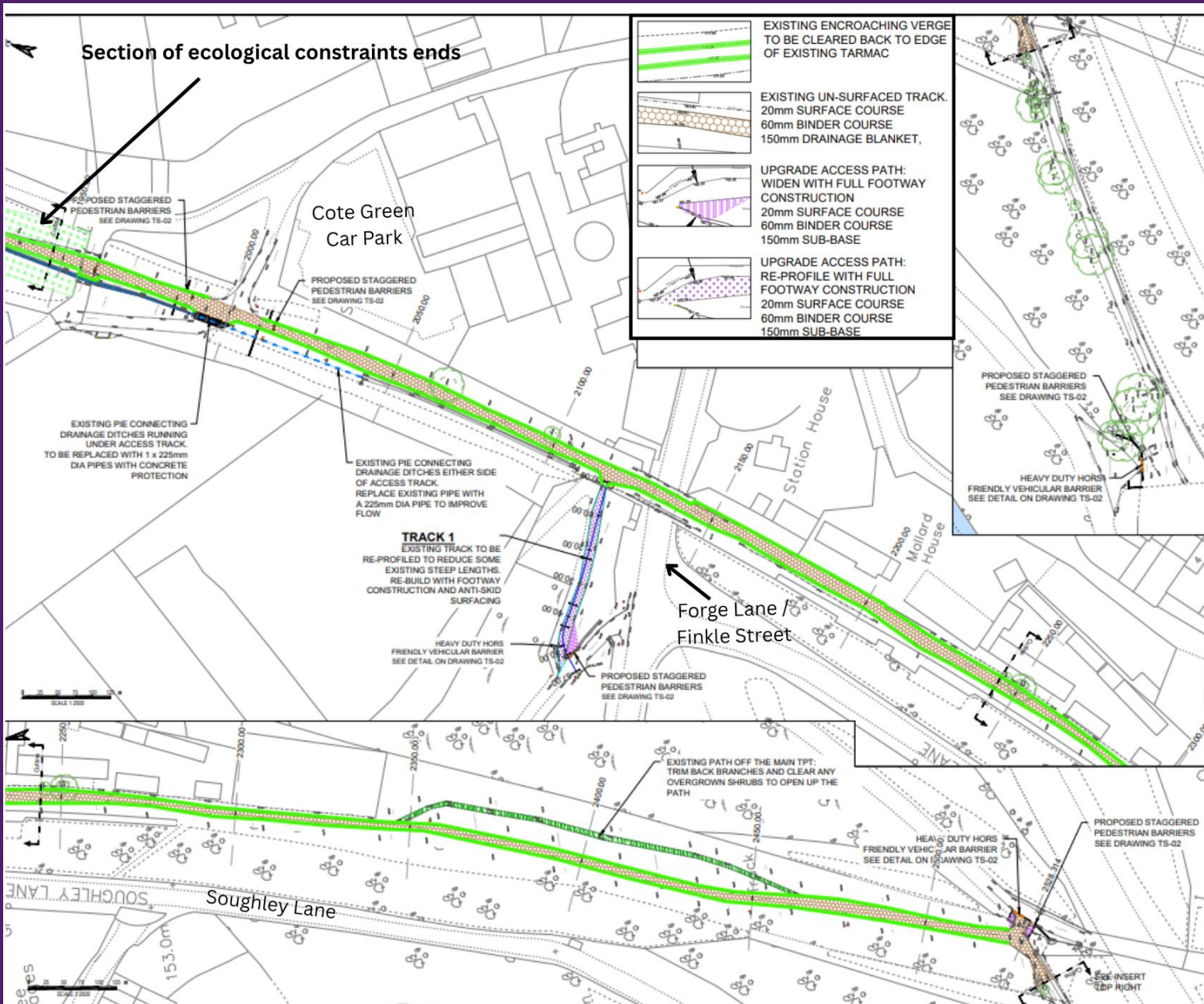
This plan shows the section of TPT Through the Wortley cutting

Improvements within this section include:

- Alterations to access barriers
- Construction of Tarmac path with anti-skid surface dressing
- Provisions to address drainage issues



Penistone to Wortley TPT Active Travel Scheme



This plan shows the section of TPT between Cote Green Car Park and the A16 Underpass

Improvements within this section include:

- Alterations to access barriers
- Construction of Tarmac path with anti-skid surface dressing
- Provisions to address drainage issues