

What is Healthier Futures Barnsley?

Healthier Futures Barnsley aims to improve the Health and Wellbeing of children and young people in Barnsley and consists of; Accreditation, Let's Hear Your Voice survey, Website and PSHE Network.



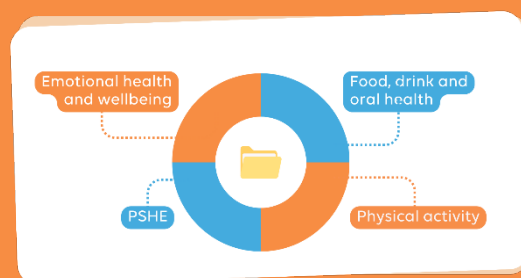
It aims to support public health and children's services in their ambition to improve children's health and wellbeing by offering a more enhanced and holistic approach through education, assessment and data collection to inform school curriculums and approaches. It aims to assist with the development and commissioning of new and existing services.

Healthier Futures Accreditation

Schools complete the accreditation digitally via an online wheel platform. The focus of feedback from the Public Health Team will be on schools' approaches to the 4 key pillars:

- Food, drink and oral health
- Physical activity
- Emotional health, and wellbeing
- PSHE (personal, social, health and economic).

Settings upload tangible evidence and examples relating to the criteria. Once all evidence is uploaded and the wheel is green, settings will then be reviewed. Upon completion, settings will receive a certificate and accreditation stamp valid for three years. Schools can produce progress reports via the online platform that can be used as evidence for both Ofsted and school governors.



Let's Hear Your Voice survey

The Let's Hear Your Voice survey is completed every two years, during school time by pupils in year 4, 6, 8, 10 and post 16.

Questions were developed through consultation with topic experts in public health, teaching staff and pupils in Barnsley, and include a variety of health and wellbeing topics.



Healthier Futures Website

The website hosts the accreditation login and information about the Let's Hear Your Voice survey.

It is a guidance resource hub for schools and professionals to help aid delivery of high quality PSHE and RSHE. You can find quality assured curriculum materials, guidance documents and details of local support services.

[Visit the Healthier Futures website](#)

PSHE Network

This digital network offers training and webinars on key PSHE topics to support delivery of PSHE. It helps to improve and instil supportive relationships between public health and schools by highlighting key public health issues for children in Barnsley and by promoting local services.

If you have additional queries about Healthier Futures Barnsley, please email PublicHealthCYP@barnsley.gov.uk